



Knutsford
Land at Legh Road





Knutsford, WA16 8NT

Land at Legh Road

£1,595,000



The Property

A rare opportunity to acquire a half-acre building plot on the town's premier road, extending to half an acre with detailed planning permission for a bespoke five-bedroom property of 5,500 sq. ft.

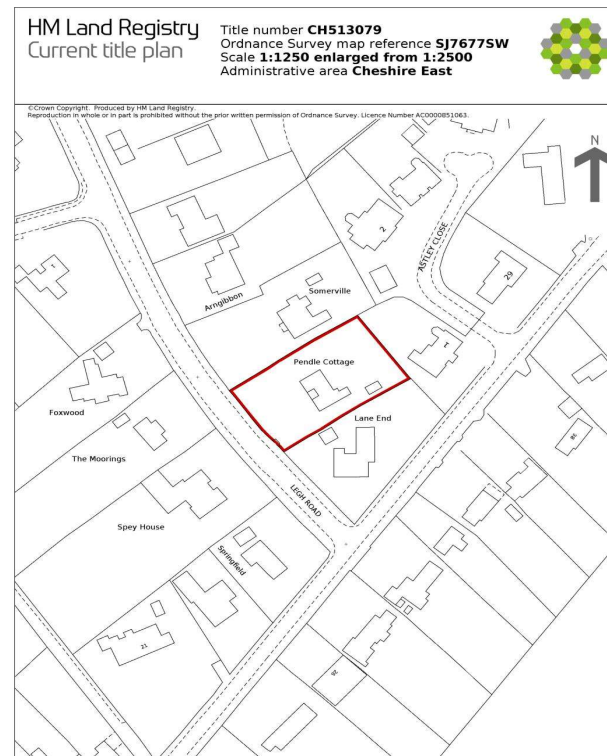
Situated in a most desirable position on wide leafy stretch of the town's premier road, set within the Legh Road conservation area, a short walk to the town centre the plot enjoys a high degree of privacy with the opportunity to build one's dream home. The site has been cleared with the original property now demolished, reducing the stamp duty liability for any potential purchaser. Consent obtained on the 20th January 2026, CEC planning reference 25/4412/VOC with plans available to view at our offices.

Directions

From the roundabout in Canute Square travel along King Edward Road (A50) turning left at the traffic lights passing the rail station. At the next set of lights continue across onto Chelford Road (A537). Upon reaching The Legh Arms public house on your right, turn right onto Legh Road where the property will be seen on your left towards the end of the road.

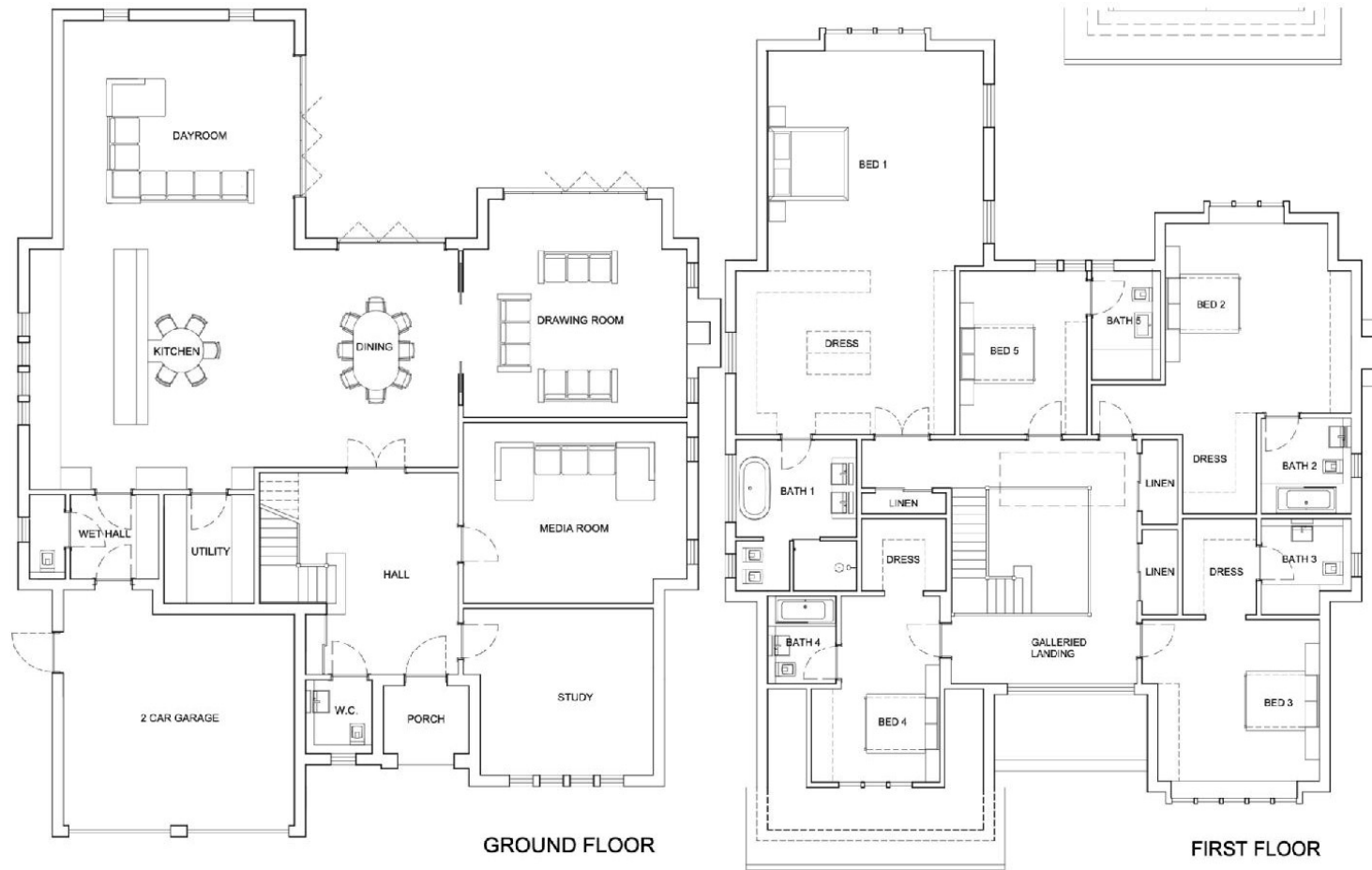
- Superb building plot of just under 0.5 acre
- Excellent opportunity to build a substantial dream home in a private location
- Planning permission granted for 5500sq ft detached property
- Short walk to Knutsford town centre & all amenities
- Site already cleared
- Plans available to view
- Planning Permission Ref: 25/4412/VOC

Postcode – WA16 8NT
Tenure – Freehold
Local Authority – Cheshire East
Council Tax – Band E



This is a print of the view of the title plan obtained from HM Land Registry showing the state of the title plan on 17 January 2025 at 15:36:44. This title plan shows the general position, not the exact line, of the boundaries. It may be subject to distortions in scale. Measurements scaled from this plan may not match measurements between the same points on the ground.

This title is dealt with by HM Land Registry, Birkenhead Office.



103 King Street, Knutsford, Cheshire, WA16 6EQ

01565 654 000

E: info@irlamsestateagents.co.uk

www.irlamsestateagents.co.uk

I1021_ Printed by Ravensworth 01670 713330

Irlams (Estate Agents) Ltd for themselves and for the vendors or lessors of this property whose agents they give notice that

(a) The particulars are set out as a general outline only for the guidance of intending purchasers or lessees, and do not constitute, nor constitute part of, an offer or contract;

(b) All descriptions, dimensions, references to condition and necessary permissions for use and occupation, and other details are given in good faith and are believed to be correct but any intending purchasers or lessees should not rely on them as statements or representations of fact, but must satisfy themselves by inspection or otherwise as to the correctness of each of them;

(c) No person in the employment of Irlams (Estate Agents) Ltd has any authority to make or give any representation or warranty whatsoever in relation to this property.

(d) We believe the information above to be accurate at the point it was obtained however you may wish to make a final check with your Solicitor or with us in respect of anything above you feel crucial before you proceed with the purchase of this property.

