



Heyfields, Worsley, M28

£885 PCM

Set in a picturesque location and within easy reach of the city centre, this development is ideal for both growing families and young professional couples.

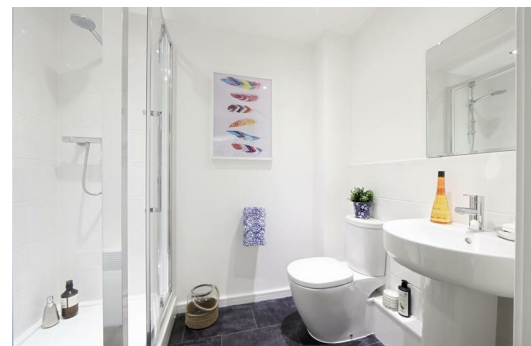
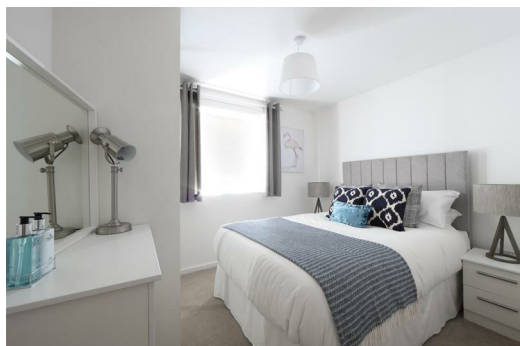
Feast your eyes on our Roosevelt apartments. Perfect for singles or a couple, they feature a contemporary open plan kitchen, living and dining area, a beautiful double bedroom with fitted wardrobe, and a sizeable bathroom.

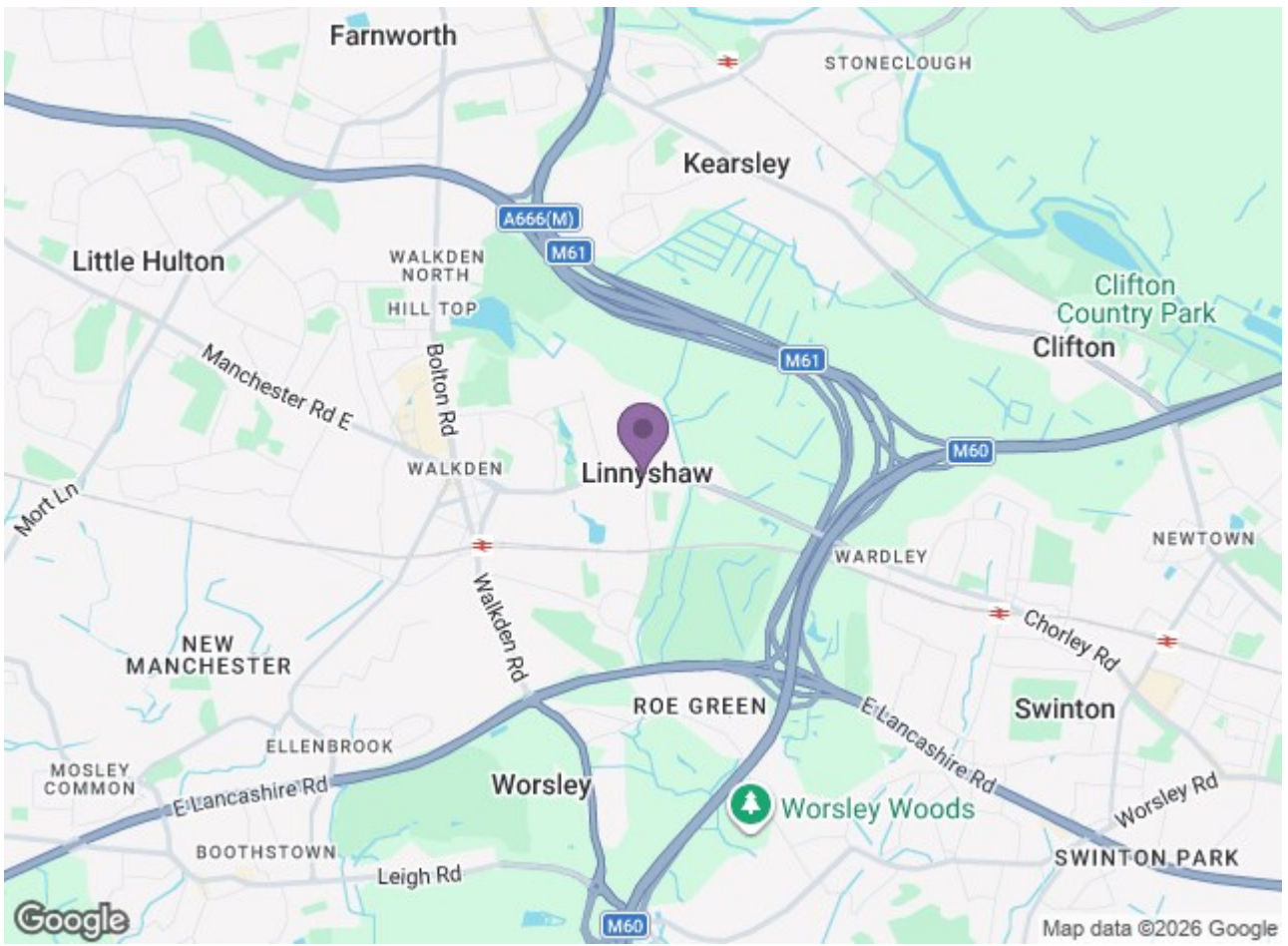
Energy efficient, these apartments have quality flooring throughout. Secure as they are comfortable, you also benefit from feature fitted alarm systems and secure-by-design windows and doors.

Walkden offers the site a local town centre which is great for shopping, food and socialising. Heyfields is also a 25-minute drive from Manchester city centre, where a more extensive range of shops and restaurants will cater for all of your needs.

There are a number of schools local to the development and Walkden and Moorside train stations are less than 2 miles away with regular services to Manchester and other neighbouring areas.

Available Now
Deposit: £1020
Council Tax Band: A
Unfurnished





Energy Efficiency Rating		Environmental Impact (CO ₂) Rating	
Current	Target	Current	Target
Energy A	Energy B	Energy A	Energy B
Energy B	Energy C	Energy B	Energy C
Energy C	Energy D	Energy C	Energy D
Energy D	Energy E	Energy D	Energy E
Energy E	Energy F	Energy E	Energy F
Energy F	Energy G	Energy F	Energy G
Energy G	Energy H	Energy G	Energy H
Energy H	Energy I	Energy H	Energy I
Energy I	Energy J	Energy I	Energy J