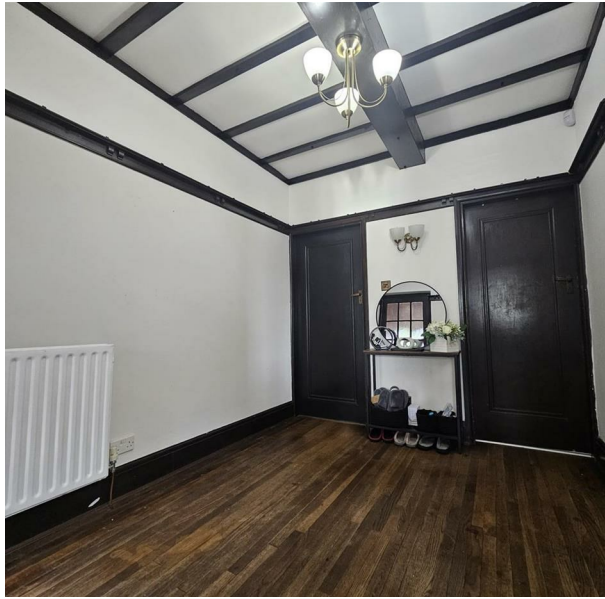


Tamworth Road, Sutton Coldfield, B75 6DG

Offers Around £695,000

Council Tax Band: F



Nestled in the sought-after area of Sutton Coldfield, this charming detached house on Tamworth Road offers a perfect blend of comfort and modern living. Spanning an impressive 1,410 square feet, the property boasts four well-proportioned bedrooms, making it an ideal family home.

Upon entering, you are greeted by two inviting reception rooms, providing ample space for relaxation and entertaining. The open-plan kitchen diner is a standout feature, designed to be the heart of the home, where family meals and gatherings can be enjoyed. Additionally, a convenient downstairs toilet enhances the practicality of the layout.

The living room is a warm and welcoming space, perfect for unwinding after a long day. The property is further complemented by a large, spacious rear garden, offering a delightful outdoor retreat for children to play or for hosting summer barbecues.

For those with vehicles, the property includes a garage and off-road parking, ensuring convenience and security. This home is not just a place to live; it is a lifestyle choice in a desirable location, close to local amenities and excellent schools.

In summary, this detached house on Tamworth Road presents a wonderful opportunity for families seeking a spacious and well-appointed home in Sutton Coldfield. With its generous living spaces, modern features, and a beautiful garden, it is sure to attract considerable interest. Do not miss the chance to make this delightful property your own.

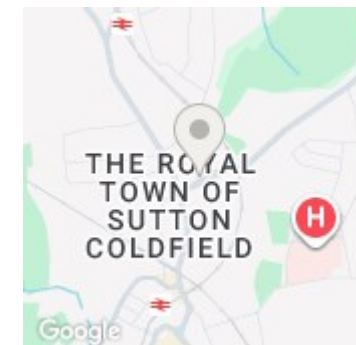
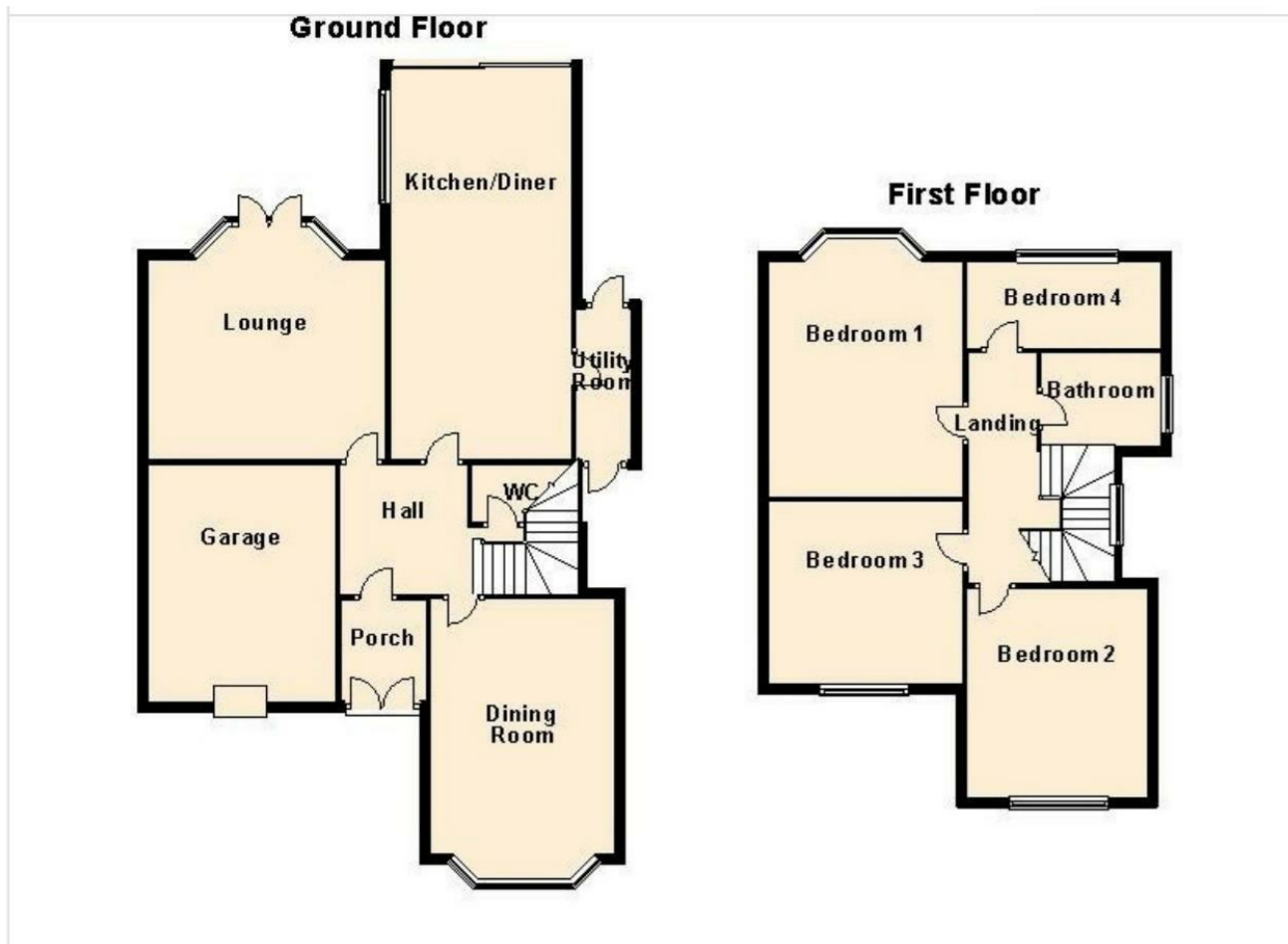
Room Sizes (Approx):

Reception 1: 4.45m x 3.77m (14.60ft x 12.37ft)

Reception 2: 4.75m x 3.45m (15.58ft x 11.32ft)



Open House Birmingham North West



Energy Efficiency Rating		
	Current	Potential
Very energy efficient - lower running costs		
(92 plus) A		
(81-91) B		
(69-80) C		
(55-68) D		
(39-54) E	50	
(21-38) F		
(1-20) G		
Not energy efficient - higher running costs		
England & Wales	EU Directive 2002/91/EC	