



BLACKSHAW ROAD, SW17

£2,500 PCM

- Ground Floor Maisonette
- Reception Room
- Modern Fitted Kitchen
- Three Double Bedrooms
- Private Rear Garden
- Energy Rating: C





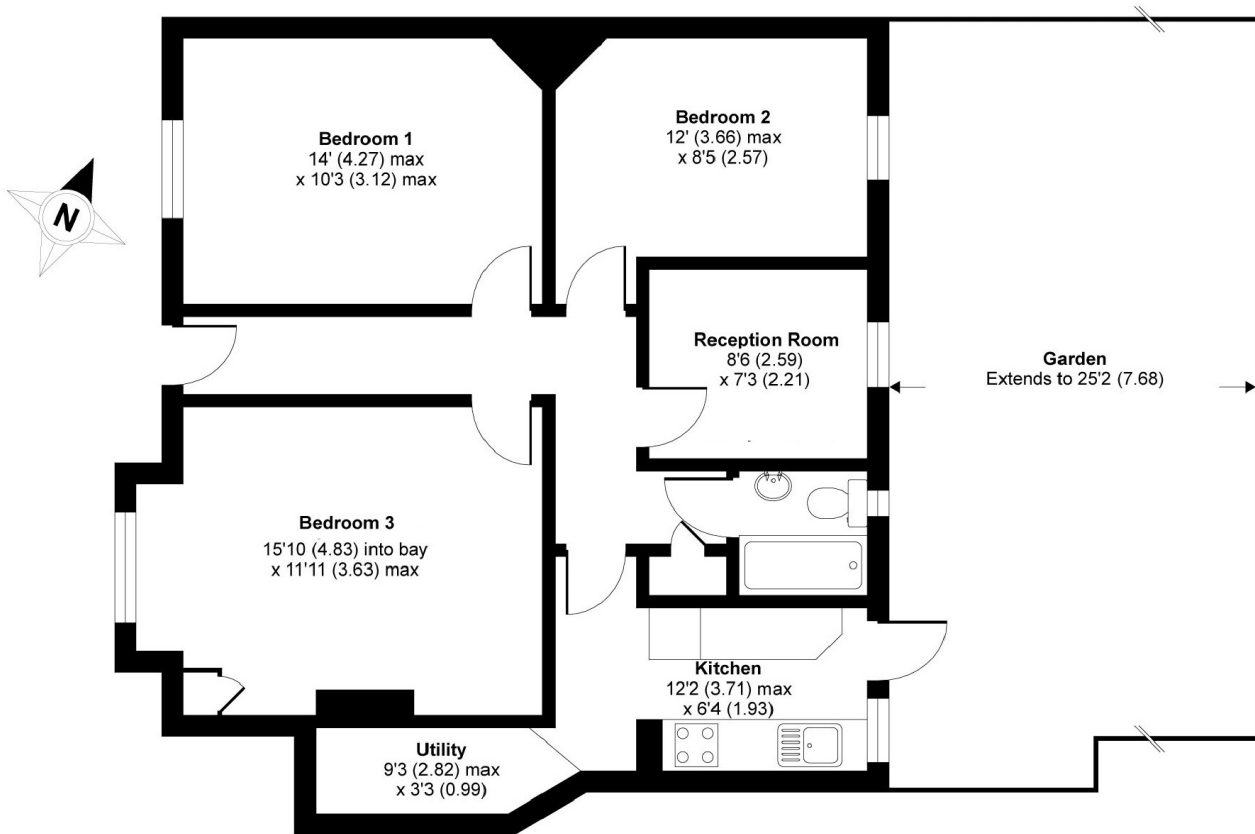
## ABOUT THE HOME

A three double bedroom ground floor maisonette with private rear garden. The property has been renovated to include a new fitted kitchen and bathroom.

Located within a short distance of both Earlsfield Rail Station & Tooting Broadway Northern Line as well as the local amenities of Garratt Lane. The property would be ideal for professional sharers.







**GROUND FLOOR**

APPROX. GROSS INTERNAL FLOOR AREA 776 SQ FT 72 SQ METRES

**Blackshaw Road, London, SW17**

Copyright nichecom.co.uk 2013 Produced for Jacksons the Independent Estate Agents REF : 452424

**JACKSONS EARLSFIELD**

372-374 Garratt Lane,  
 Earlsfield, London, SW18 4ES  
 Sales: 020 8971 7979  
 Lettings: 020 8971 7070

Energy Rating: C We aim to make our particulars both accurate and reliable. However they are not guaranteed; nor do they form part of an offer or contract. If you require clarification on any points then please contact us, especially if you're traveling some distance to view. Please note that appliances and heating systems have not been tested and therefore no warranties can be given as to their good working order.