



Price
£335,000

Freehold

3x  1x  1x 

**Woodlands, Coxheath,
Maidstone, Kent, ME17**

Wards
Helping you move forwards



Main features

- **Spacious lounge/diner, bright and airy with lots of natural light**
- **Quiet cul de sac location**
- **Generous and private rear garden, perfect for the summer months**
- **Popular village location, short walk to local shops and Coxheath primary School**
- **NO FORWARD CHAIN**

Accommodation

GROUND FLOOR

Entrance Hall

Lounge/Diner: 22'8 x 12'3 (6.91m x 3.74m)

Kitchen: 9'7 x 7'7 (2.92m x 2.31m)

FIRST FLOOR

Landing

Bedroom 1: 12'5 x 10'8 (3.79m x 3.25m)

Bedroom 2: 10'8 x 9'10 (3.25m x 3.00m)

Bedroom 3: 7'9 x 7'5 (2.36m x 2.26m)

Bathroom: 5'5 x 4'10 (1.65m x 1.47m)

Separate Toilet: 5'6 x 2'5 (1.68m x 0.74m)

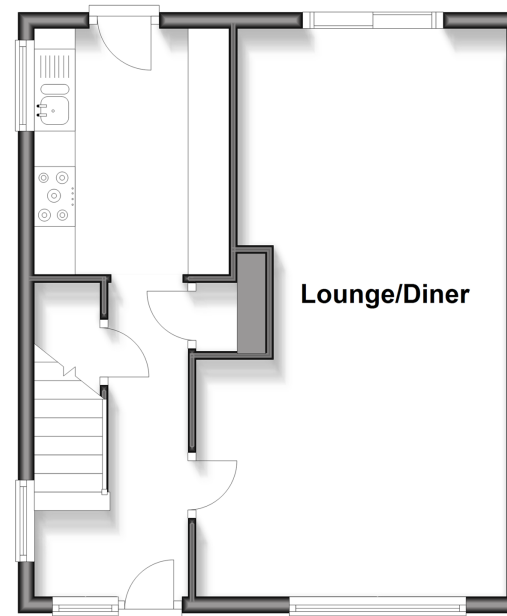
OUTSIDE

Driveway

Front and Rear Gardens

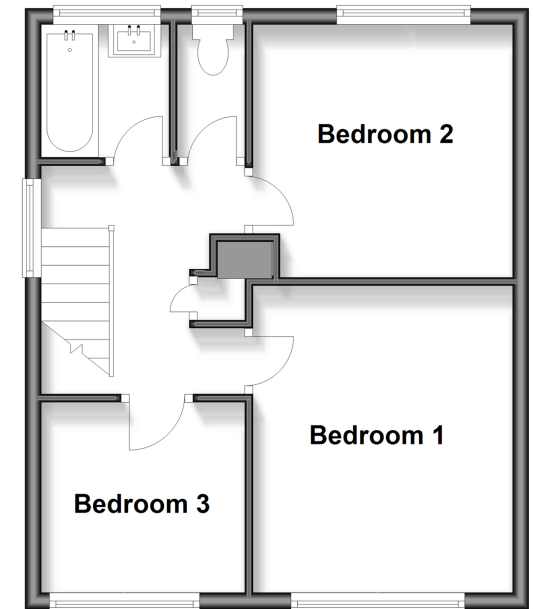
Ground Floor

Approx. 37.1 sq. metres (399.6 sq. feet)



First Floor

Approx. 40.2 sq. metres (433.2 sq. feet)



Call Loose - 01622 744067 ■ wardsof Kent.co.uk

■ Legal advice should be taken to verify fixtures/fittings, planning, alterations and/or lease details

■ Appliances & services are untested, dimensions are approximate and floor plans are not to scale



13017582/20251215/KIR/VMK