



jordan fishwick

WEST DIDSBURY
Palatine Road



**Palatine Road, West
Didsbury, M20 3LJ**

£1,450 Per Calendar Month



The Property

*** AVAILABLE NOW *** A spacious newly refurbished, two double bedroom, two-bathroom apartment situated on the lower ground floor of the exclusive Mottram Manor development on Palatine Road, West Didsbury. Close to the Metrolink and local bars & restaurants, the accommodation is ideal for a professional couple or two people sharing and briefly comprises; stylish communal areas with large rear gardens, entrance hallway, separate contemporary kitchen with range of appliance, large modern lounge / diner, two excellent sized double bedrooms with the master housing a shower ensuite and a modern three-piece bathroom. Gas central heating is installed, and one secure parking space is included. Fully Furnished. To view please contact our Didsbury office.

View our Virtual Tour Here - <https://youtu.be/Mro6x8BErNQ>

EPC Rating C // Council Tax Band C

Directions

M20 3LJ



- Available Now
- Two Double Bedrooms
- Two Bathrooms
- Furnished
- Newly Refurbished Throughout
- Ideal for Couples & Sharers
- Great Location of West Didsbury
- Parking for One Car
- Council Tax Band C
- EPC Rating C

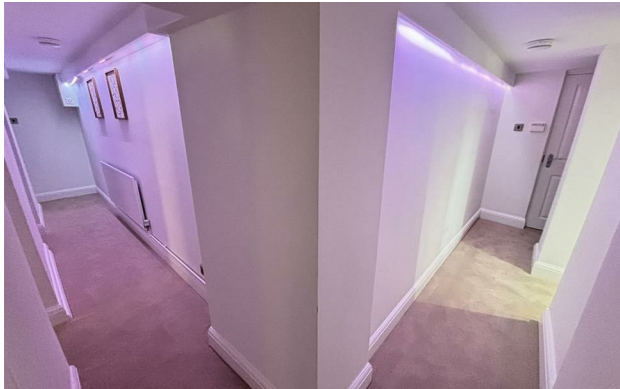
Postcode - M20 3LJ

EPC Rating - C

Floor Area - sq ft

Local Authority - Manchester

Council Tax - C





These particulars are believed to be accurate but they are not guaranteed and do not form a contract. Neither Jordan Fishwick nor the vendor or lessor accept any responsibility in respect of these particulars, which are not intended to be statements or representations of fact and any intending purchaser or lessee must satisfy himself by inspection or otherwise as to the correctness of each of the statements contained in these particulars. Any floorplans on this brochure are for illustrative purposes only and are not necessarily to scale.

Offices also at: Wilmslow, Macclesfield, Hale, Sale, Chorlton, Glossop, Manchester & Salford

757-759 Wilmslow Road, Didsbury Village, Manchester

0161 445 4480

didsbury@jordanfishwick.co.uk
www.jordanfishwick.co.uk