

for sale

£350,000



## Grove Corner Redhouse Park Milton Keynes MK14 5FA

Connells are pleased to bring to the market a three-bedroom Linked-detached home set in the much sought after area of Redhouse Park.





# Grove Corner Redhouse Park Milton Keynes MK14 5FA

## Hallway

Front door. Doors to cloakroom, Kitchen and Lounge/Diner. Stairs to first floor.

## Cloakroom

W/C. Sink. Window to front aspect.

## Kitchen

8' x 10' ( 2.44m x 3.05m )

Base and eye level units. Sink with drainer. Oven with hob. Space for appliances and window to front aspect.

## Lounge/Diner

15' 2" x 16' 2" ( 4.62m x 4.93m )

Doors to rear garden. Windows to rear aspect. Storage cupboard.

## Landing

Doors to Master Bedroom; Bedroom two, three, family bathroom and a storage cupboard.

## Master

9' 7" x 14' 5" ( 2.92m x 4.39m )

Door to Ensuite. Window to front aspect.

## Ensuite

Bath with shower over. W/C. Sink. Window to rear aspect.

## Bedroom Two

15' 2" x 11' 3" ( 4.62m x 3.43m )

Very good size room. Window to front aspect.

## Bedroom Three

15' x 7' 5" ( 4.57m x 2.26m )

Window to rear aspect.

## Bathroom

Bath with shower over. W/C. Sink. Window to rear aspect.

## Rear Garden

Enclosed rear garden. Gated access.

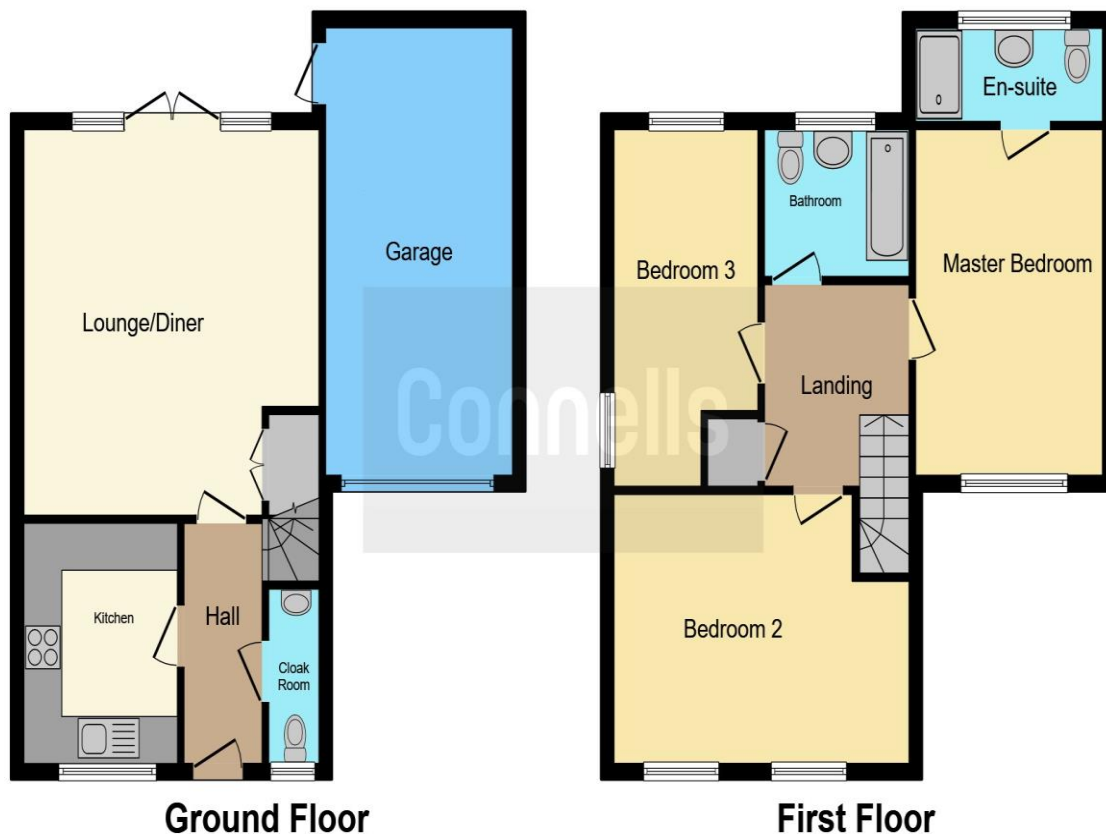












This floor plan is for illustrative purposes only. It is not drawn to scale. Any measurements, floor areas (including any total floor area), openings and orientation are approximate. No details are guaranteed, they cannot be relied upon for any purpose and they do not form part of any agreement. No liability is taken for any error, omission or misstatement. A party must rely upon its own inspection(s). Powered by [www.focalagent.com](http://www.focalagent.com)

To view this property please contact Connells on

**T 01908 610 805**  
**E [newportpagnell@connells.co.uk](mailto:newportpagnell@connells.co.uk)**

91 High Street Newport Pagnell  
 MILTON KEYNES MK16 8EN

Property Ref: NPA306369 - 0005

Tenure: Freehold EPC Rating: C

Council Tax Band: D

**view this property online [connells.co.uk/Property/NPA306369](http://connells.co.uk/Property/NPA306369)**



1. MONEY LAUNDERING REGULATIONS Intending purchasers will be asked to produce identification documentation at a later stage and we would ask for your co-operation in order that there will be no delay in agreeing the sale. 2. These particulars do not constitute part or all of an offer or contract. 3. The measurements indicated are supplied for guidance only and as such must be considered incorrect. Potential buyers are advised to recheck measurements before committing to any expense. 4. We have not tested any apparatus, equipment, fixtures, fittings or services and it is in the buyers interest to check the working condition of any appliances.

Connells Residential is registered in England and Wales under company number 1489613, Registered Office is Cumbria House, 16-20 Hockliffe Street, Leighton Buzzard, Bedfordshire, LU7 1GN. VAT Registration Number is 500 2481 05.

see all our properties at [www.connells.co.uk](http://www.connells.co.uk) | [www.rightmove.co.uk](http://www.rightmove.co.uk) | [www.zoopla.co.uk](http://www.zoopla.co.uk)