



www.jeffreygross.co.uk

CARDIFF

VALE

CAERPHILLY

BRISTOL



Conway Road

PONTCANNA



Comments by Ms Gemma Simmonite

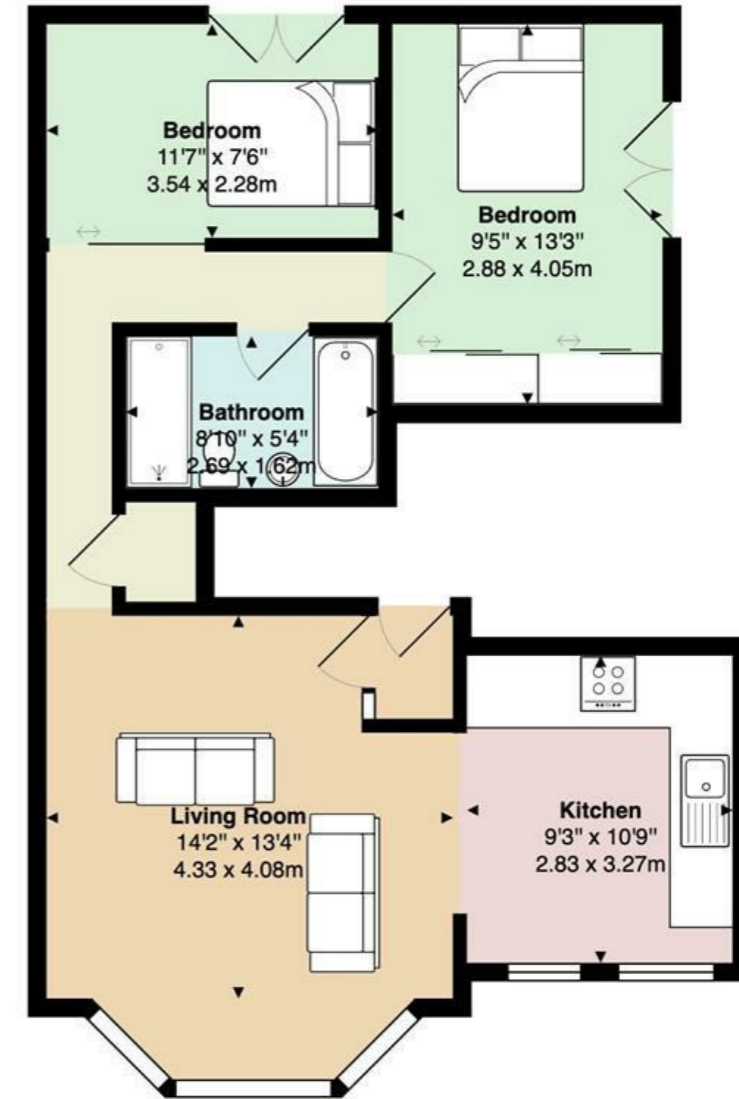


Property Specialist
Ms Gemma Simmonite
Lettings Negotiator

gemma.simmonite@jeffreyross.co.uk



Comments by the Homeowner



14b Conway Road

Total Area: 662 ft² ... 61.5 m²

All measurements are approximate and for display purposes only

Conway Road

Pontcanna, Cardiff, CF11 9NT

PCM

£1,250 PCM



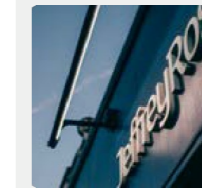
2 Bedroom(s)



1 Bathroom(s)



517.00 sq ft



Contact our
Pontcanna Branch

02920 499680

****MUST SEE APARTMENT**** Jeffrey Ross are delighted to market this beautifully furnished two bedroom apartment on Conway Road in the heart of Pontcanna. The property comprises of two double bedrooms, fully modernised kitchen with white goods included (washer-dryer and fridge-freezer) leading to an open plan living room/diner with bay fronted windows and one family bathroom with bath and shower overhead. The property is available fully furnished and also benefits from one allocated parking space to the rear.

EPC Rating: D
Council Tax Band: B

A holding fee of one weeks' rent will be payable to secure the property. This will be deducted from the final balance payable upon moving into the property, subject to a successful application. JeffreyRoss Limited reserves the right to retain this payment should the applicant have provided false or misleading information at the time of applying for the Tenancy or failed to take reasonable steps to enter into the tenancy agreement





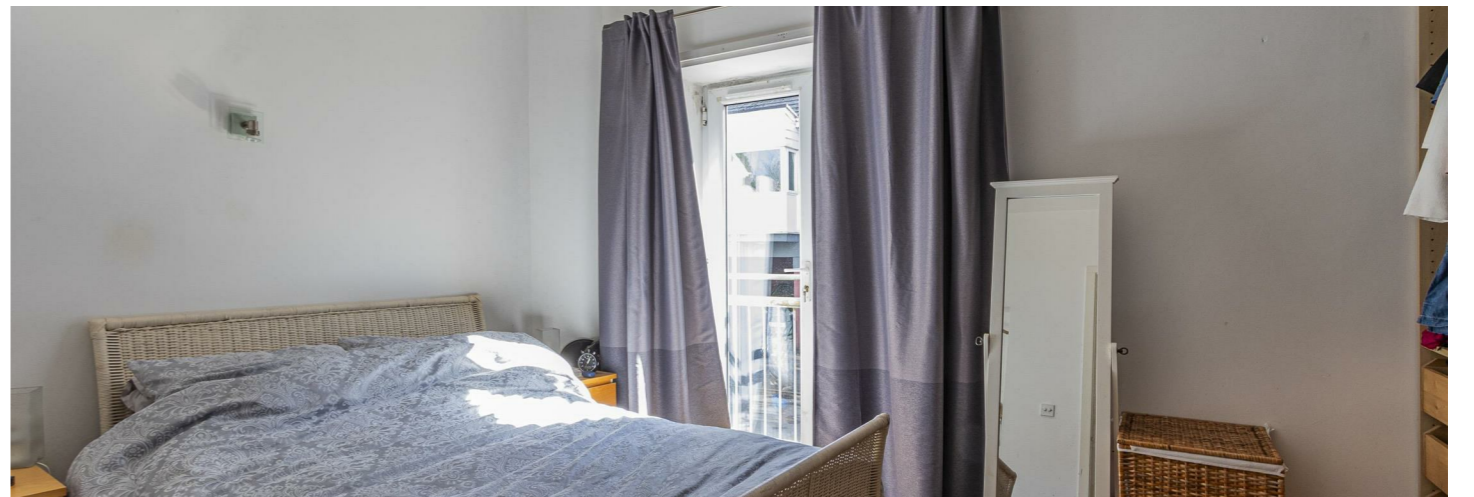
CARDIFF

VALE

CAERPHILLY

BRISTOL

www.jeffreygross.co.uk





Energy Efficiency Rating

	Current	Potential
Very energy efficient - lower running costs		
(92 plus) A		
(81-91) B		
(69-80) C		
(55-68) D		
(39-54) E		
(21-38) F		
(1-20) G		
Not energy efficient - higher running costs		

England & Wales EU Directive 2002/91/EC 

