



Comeragh Road, W14

£800,000

A modern and spacious three bedroom apartment. The property is situated over two floors with a private balcony off the reception and a fantastic roof terrace.

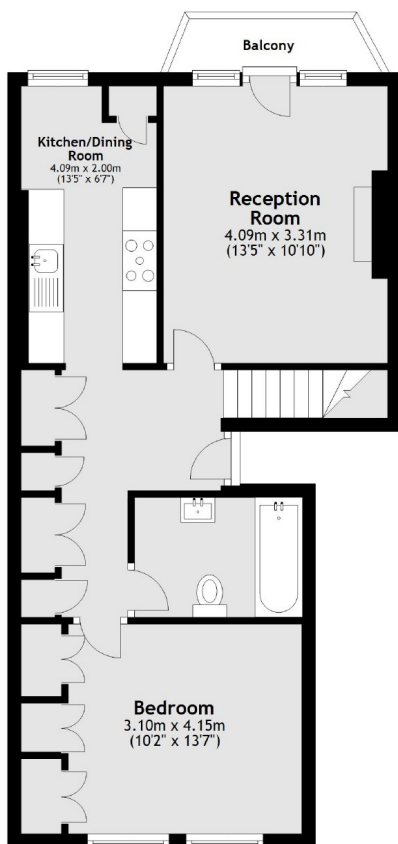
Comeragh Road is a highly sought after location within two hundred yards to Barons Court and West Kensington tube stations, local shops, the A4 and bus services on North End Road.

Features

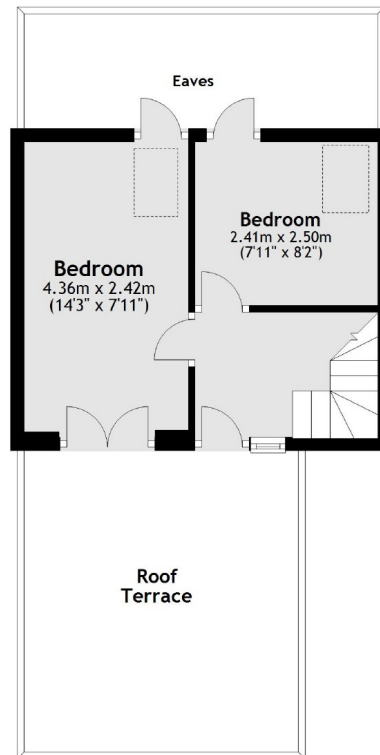
- Long Leasehold
- Three Bedrooms
- Private Terrace
- Modern
- Close To Tubes
- Light

Comeragh Road, London, W14

Second Floor



Third Floor



Main area: Approx. 73.3 sq. metres (789.2 sq. feet)

Plus balconies, approx. 2.5 sq. metres (27.2 sq. feet)
Plus roof terrace, approx. 18.4 sq. metres (198.1 sq. feet)