



COAST & COUNTRY LIVING

Finer Details



Sitting room with a feature fireplace

Kitchen/Dining room

Utility

Dining room

2 Conservatories

4 Bedrooms

Family Bathroom

Beautiful established gardens

Patio areas

Double Garage



Set in the heart of a charming Broadland village, this beautifully presented 4-bedroom detached home offers the perfect blend of countryside and tranquillity, yet only 5 miles from the cathedral city of Norwich and a short drive to the Norfolk Broads. Surrounded by a woodland, giving complete privacy, this property is ideal for families seeking space and comfort in a welcoming community.

The setting for Number 18 in the popular village of Frettenham really couldn't be better. Approaching the property, I note how well kept the property is, the impressive brick weave driveway and double garage offer plenty of parking, whilst being set back from the road, offering privacy.

Through the front door and into the entrance hall, carpeted and well dressed, it's light and spacious and has a welcoming feel, as does the whole house. It's clear this has been a very well-loved family home.





Back into the hallway and through to the modern kitchen, which runs the length of the property, offering everything you would expect, including a hob, double oven, and plenty of storage.

The kitchen flows into a large conservatory, a wonderful place to eat whilst enjoying the views out over the garden. There is a dining room, which at present is used as a snug.











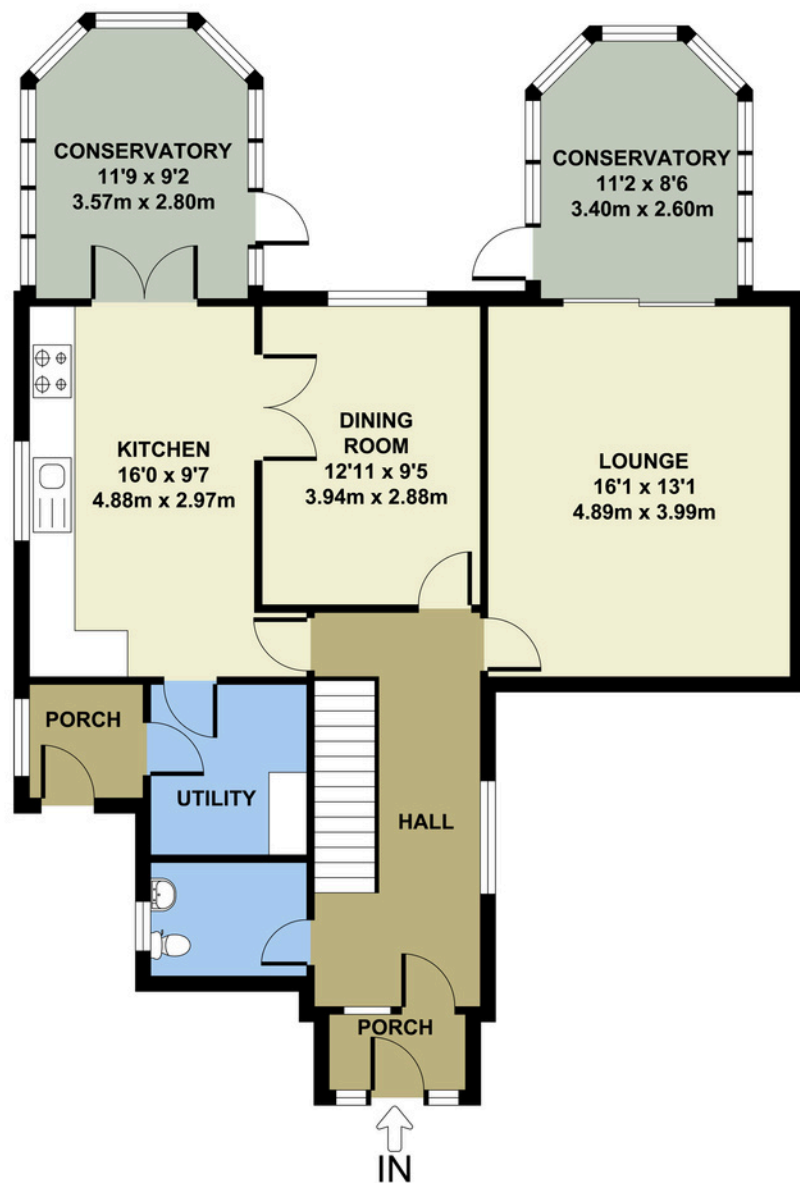


The garden is a particular feature of this property, being planted with many varieties of plants, shrubs and trees. The garden itself is surrounded by woodland and is completely secure and private, with a gate to the side. There is a large garden shed for storage and plenty of space to grow your own fruit and vegetables, as well as different patio areas to enjoy eating outside.

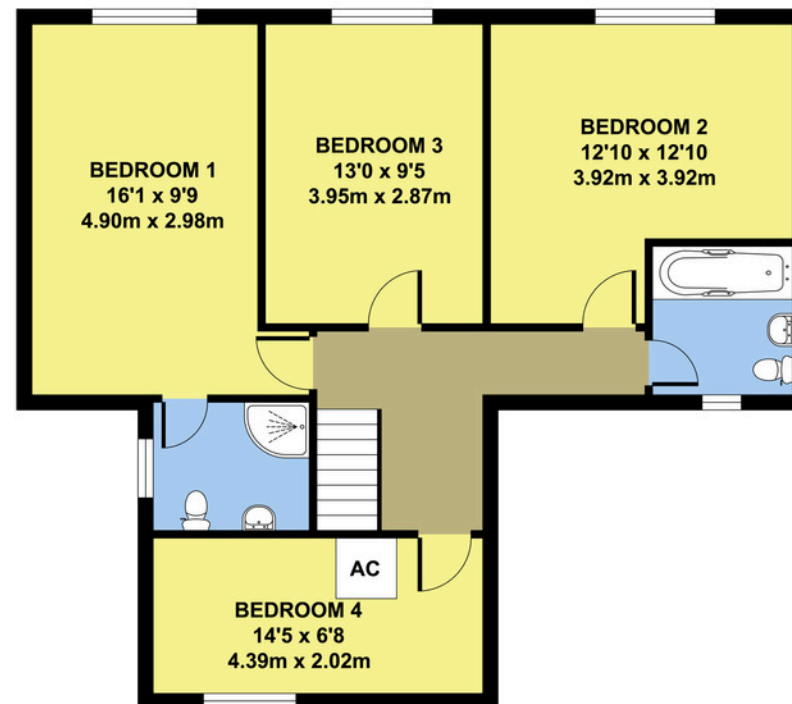
To the front of the property, there is a double garage and parking for several cars on the expansive driveway.







GROUND FLOOR



FIRST FLOOR

Total approx area:
 156 sq. m
 1679 sq. ft.