

Property ref: 174654

## Eldon Road, Reading, RG1 4DL

£1,100 PCM

**HASLAM'S**  
Lettings



A very well presented ground floor one bedroom apartment located within within the Eldon Square Conservation Area; convenient for Royal Berkshire Hospital, Reading town centre and the mainline station. Reading Borough Council tax band A.

Water supply: Mains

Drainage info: Mains

Electricity supply: Mains

Broadband/Mobile Info: Connections available. For an indication of specific speeds and supply of Broadband and Mobile, we advise applicants go to the Ofcom website Broadband and Mobile Coverage Checker.

**Available 05/06/2026**

\*Fees For Assured Shorthold Tenancies: when you rent a property from us you will be required to pay a sum equivalent to one weeks' rent for a holding deposit. Upon successful application, this amount will be off set against your first months' rent. You will also be required to pay a security deposit equivalent to 5 weeks' rent which will be held and protected in line with Deposit legislation. For more information about our fees please visit: [www.haslams.net](http://www.haslams.net)  
Fees for all other tenancies (Non Housing Act Tenancies / Company Lets): when you rent a property from us we will charge you a one-off fee per property. This charge is the equivalent of 15 days of the monthly rental charge (+VAT) with a minimum fee of £450 (inc.VAT) up to a maximum of £650 (inc.VAT). Other fees may apply depending on your circumstances.

- One double bedroom
- Fully fitted kitchen with appliances
- Bathroom with shower over the bath
- Electric storage heaters; EPC rating C
- Allocated parking available for £250 PER QUARTER
- Furnished; Managed by LANDLORD

**0118 960 1055**

**[lettings@haslams.net](mailto:lettings@haslams.net) [www.haslams.net](http://www.haslams.net)**

**Haslams Estate Agents Ltd, 159 Friar Street, Reading, Berkshire, RG1 1HE**

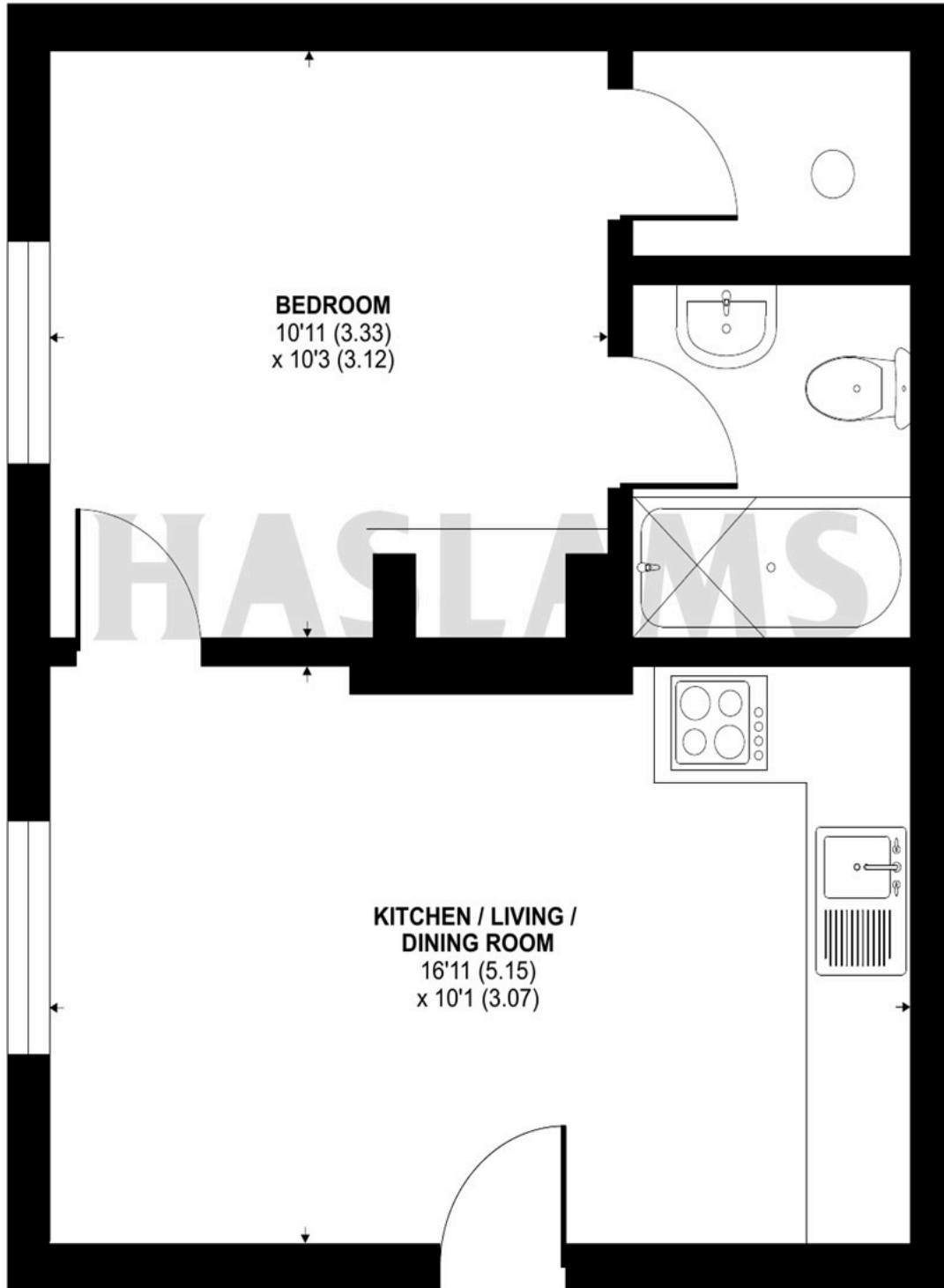




# Eldon Road, Reading, RG1

Approximate Area = 351 sq ft / 32.6 sq m

For identification only - Not to scale



**GROUND FLOOR**



Floor plan produced in accordance with RICS Property Measurement 2nd Edition, Incorporating International Property Measurement Standards (IPMS2 Residential). © nchecon 2025. Produced for Haslamss. REF: 1357861