



Connells

Barrow Close
SALISBURY



Property Description

Offering to the market this well-presented semi-detached house in Barrow Close, Salisbury. This modern property has a kitchen, lounge & cloakroom on the ground floor, with two bedrooms and the bathroom on the first floor. There is a well maintained, tiered garden to the rear which is ideal for relaxing and entertaining. There is a driveway to the side of this property. Barrow Close is situated a short distance from Downton Road (A338) with local facilities, the hospital and bus services nearby.

Salisbury offers a range of entertainment, shopping and cultural facilities. There is a twice weekly Charter market in the city centre. Salisbury has direct rail services to London Waterloo, Southampton and the West Country and is conveniently located for the New Forest and South Coast.



Entrance Hall

Doors to kitchen, cloakroom, lounge & downstairs cupboard.

Kitchen

9' 1" x 8' (2.77m x 2.44m)

Comprising wall & base units with work surfaces above, stainless steel sink drainer with mixer tap, oven & hob with extractor unit above, spaces for washing machine and fridge freezer, window front aspect.

Cloakroom

Comprising pedestal wash hand basin & WC

Lounge

15' x 14' (4.57m x 4.27m)

Inset electric fire with surround lights, door and window rear aspect

Landing

Doors to bedrooms and bathroom

Bedroom One

11' 9" x 11' 6" (3.58m x 3.51m)

Built in wardrobe, window front aspect

Bedroom Two

15' 3" x 7' 9" (4.65m x 2.36m)

Window rear aspect

Bathroom

Comprising enclosed bath with shower above & glass shower screen, pedestal wash hand basin, WC, storage cupboard, window rear aspect.

Outside

Rear Garden

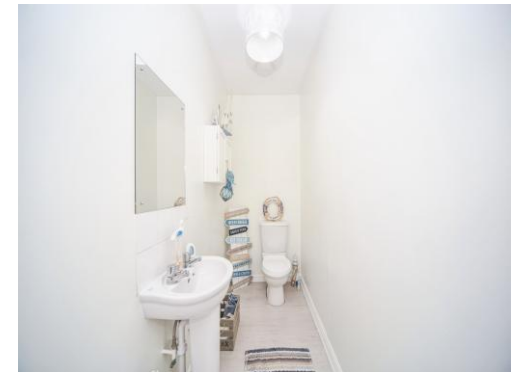
Enclosed by fencing and side access gate, gravel patio area, slab steps down to decked patio area with room for table and chairs, small lawn, step down to lower area with garden shed, room for BBQ

Front Garden

Picket fence, mature shrubs, path and step to front door.

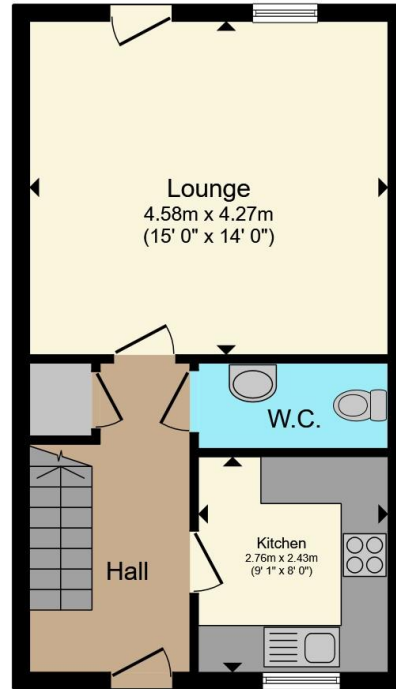
Parking

Driveway to the side of the property.

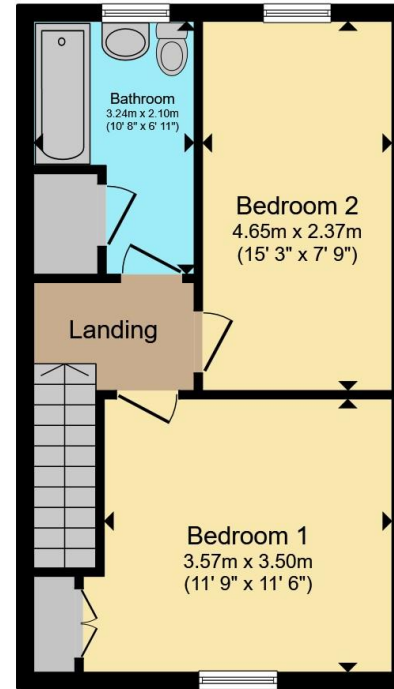








Ground Floor



First Floor

Total floor area 76.3 m² (821 sq.ft.) approx

This floor plan is for illustrative purposes only. It is not drawn to scale. Any measurements, floor areas (including any total floor area), openings and orientation are approximate. No details are guaranteed, they cannot be relied upon for any purpose and they do not form part of any agreement. No liability is taken for any error, omission or misstatement. A party must rely upon its own inspection(s). Powered by www.propertybox.io



To view this property please contact Connells on

T 01722 328 562
E salisbury@connells.co.uk

46-50 Castle Street
 Salisbury SP1 3TS

EPC Rating: Awaited
 Council Tax Band: C

Service Charge: 505.74 Ground Rent: 1.00

Tenure: Leasehold

view this property online connells.co.uk/Property/SAL308355

This is a Leasehold property with details as follows; Term of Lease 125 years from 26 Nov 2014. Should you require further information please contact the branch. Please Note additional fees could be incurred for items such as

1. MONEY LAUNDERING REGULATIONS Intending purchasers will be asked to produce identification documentation at a later stage and we would ask for your co-operation in order that there will be no delay in agreeing the sale. 2. These particulars do not constitute part or all of an offer or contract. 3. The measurements indicated are supplied for guidance only and as such must be considered incorrect. Potential buyers are advised to recheck measurements before committing to any expense. 4. We have not tested any apparatus, equipment, fixtures, fittings or services and it is in the buyers interest to check the working condition of any appliances.

Connells Residential is registered in England and Wales under company number 1489613, Registered Office is Cumbria House, 16-20 Hockliffe Street, Leighton Buzzard, Bedfordshire, LU7 1GN. VAT Registration Number is 500 2481 05.



See all our properties at www.connells.co.uk | www.rightmove.co.uk | www.zoopla.co.uk

Property Ref: SAL308355 - 0004