



Juniper Drive, SW18

£795,000

Waterview



A rare penthouse apartment with an exceptional wrap-around terrace and panoramic views across the River Thames. Defined by its remarkable outdoor space, floor-to-ceiling windows and ever-changing river views, this is a truly unique home within Battersea Reach.

Battersea Reach is an award winning development by St.George within easy reach of Clapham Junction and Wandsworth Town.





The accommodation comprises of a spacious entrance hall, leading to an open-plan reception room, dining area and modern kitchen, all designed to maximise natural light and take full advantage of the panoramic river views.

The principal bedroom benefits from an en-suite bathroom and its own private balcony with river views. The second double bedroom enjoys excellent natural light and far-reaching outlooks, as well as an en-suite.

Residents benefit from 24 hour concierge, secure underground parking, exclusive fob-controlled access to the 11th floor penthouse level and direct access to the riverside towpath.

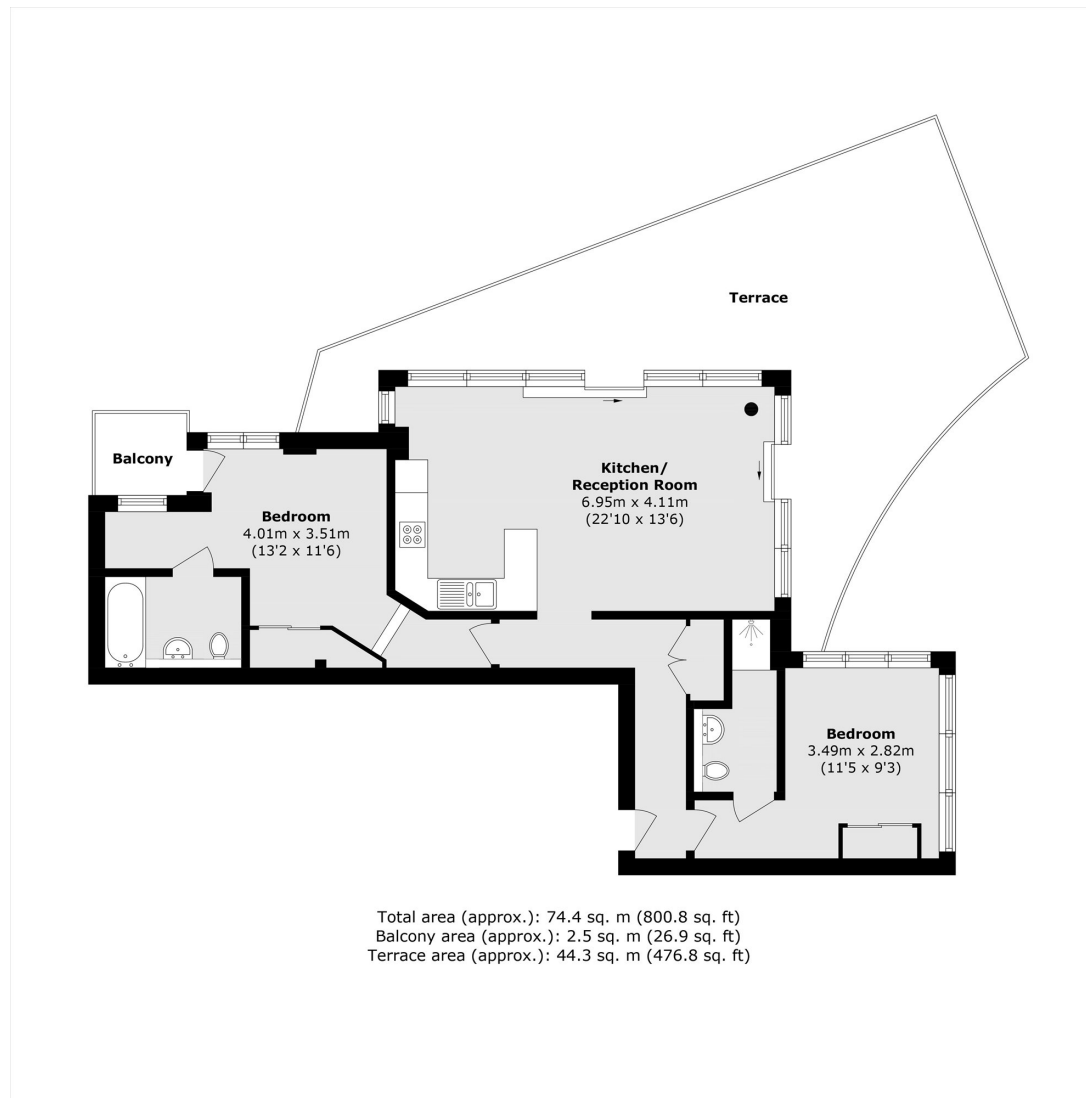
Available with no onward chain. Ideally positioned within easy reach of Clapham Junction, Wandsworth Town and central London

Features

- Penthouse
- Wrap-Around Terrace
- Panoramic River Views
- 24-Hour Concierge
- Secure Parking
- No Chain



Juniper Drive, Wandsworth, SW18



Contact

To arrange a viewing call our office on the number below or visit our website.



Energy Rating: C. We aim to make our particulars both accurate and reliable. However they are not guaranteed; nor do they form part of an offer or contract. If you require clarification on any points then please contact us, especially if you're traveling some distance to view. Please note that appliances and heating systems have not been tested and therefore no warranties can be given as to their good working order.

