



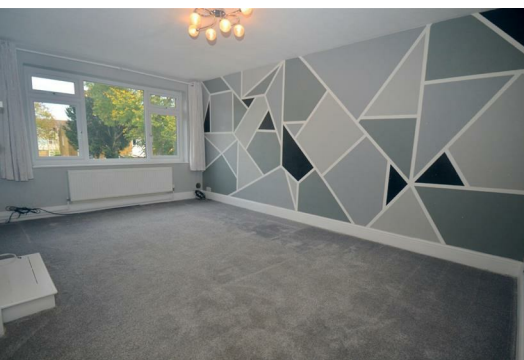
## 101 Jasmin Road

Ewell West, Surrey, KT19 9EA

**£1,700 Per Calendar Month**



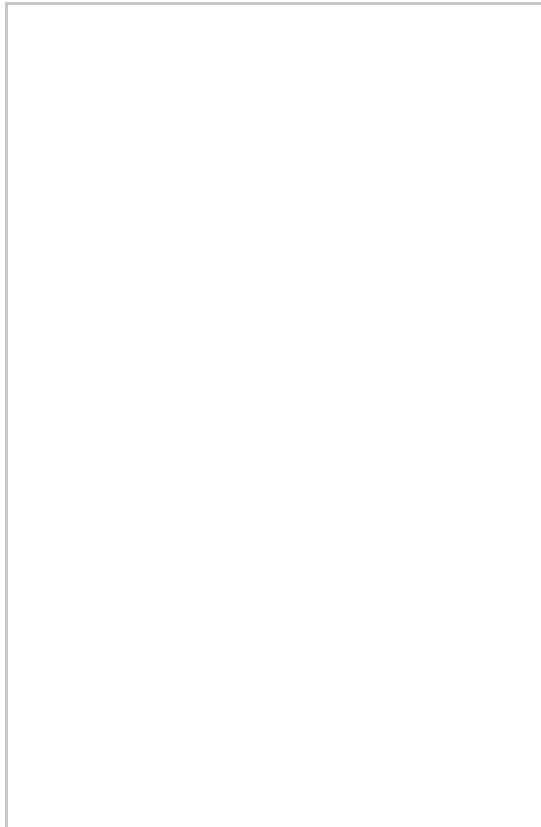
Thomas and May is delighted to offer this spacious and very well presented two double bedroom maisonette. Accommodation comprises bright living room , modern fitted kitchen, two double bedrooms and a family bathroom. The property benefits from off street parking for two cars, garage and a private garden.



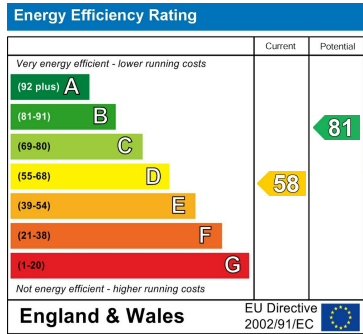
### Area Map



### Floor Plans



### Energy Efficiency Graph



These particulars, whilst believed to be accurate are set out as a general outline only for guidance and do not constitute any part of an offer or contract. Intending purchasers should not rely on them as statements of representation of fact, but must satisfy themselves by inspection or otherwise as to their accuracy. No person in this firms employment has the authority to make or give any representation or warranty in respect of the property.