



## Conway Street, W1T

### £900,000

A bright two double bedroom apartment in a Georgian building just off Fitzroy Square. Arranged over the top two floors with share of the freehold.

Within easy reach of Regents Park and the restaurants, galleries and retail facilities of the West End. Nearby tube stations include Great Portland Street, Warren Street and Regents Park.

### Features

- Share Of Freehold
- Two Double Bedrooms
- Reception
- Kitchen - Breakfast Room
- Period Building
- Top Floor



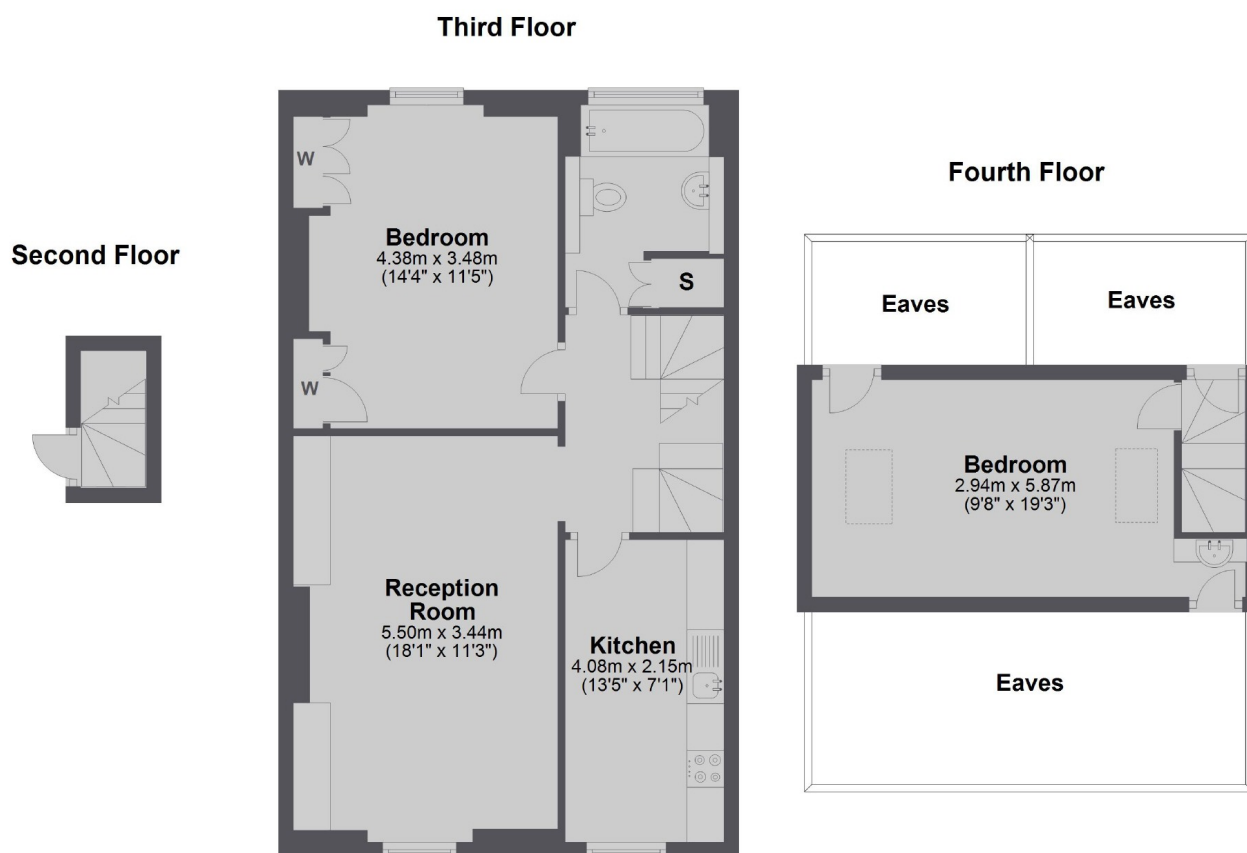
## Conway Street, W1T

The property has been tastefully redecorated by the current owners and has a refitted kitchen and modern bathroom. The apartment has access to storage space in the eaves (not demised).





# Conway Street, London, W1T



Total area: approx. 75.3 sq. metres (810.7 sq. feet)

## Dexters

Marylebone  
53-55 Weymouth Street  
London  
W1G 8NJ  
Sales  
020 7224 5544

Energy Rating: C. We aim to make our particulars both accurate and reliable. However they are not guaranteed; nor do they form part of an offer or contract. If you require clarification on any points then please contact us, especially if you're traveling some distance to view. Please note that appliances and heating systems have not been tested and therefore no warranties can be given as to their good working order.

 **RICS** | Regulated  
Estate Agent  
and Letting Agent

[dexters.co.uk](https://www.dexters.co.uk)