



**POOLE
TOWNSEND**

Provincial Street, Barrow-in-furness, LA13 9PQ

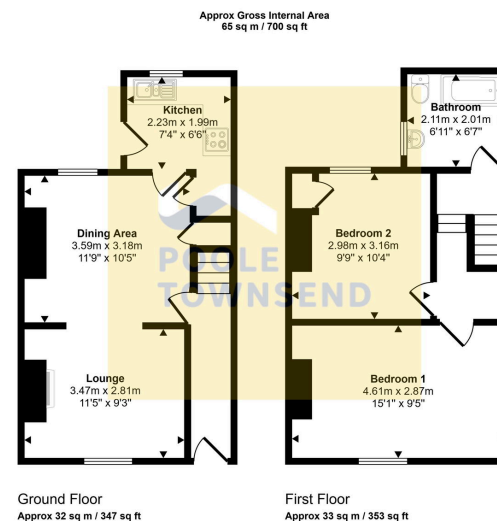
£89,950

🛏 2 🚿 1 🛋 2



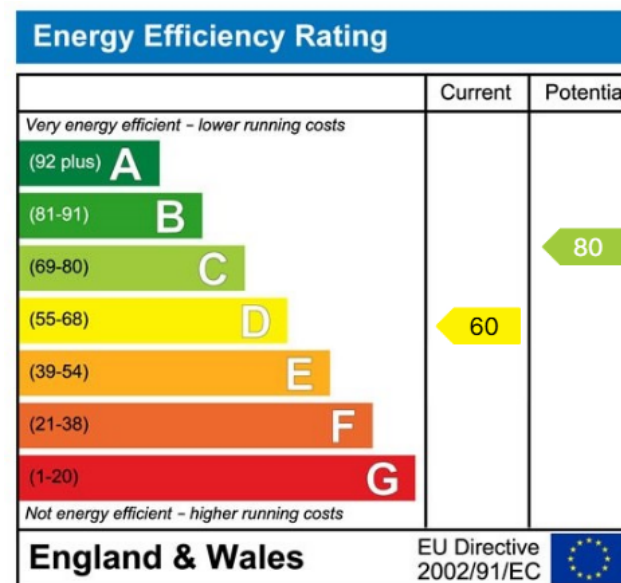
- Popular residential location
- Close to amenities
- Gas central heating
- No upper chain
- EPC D
- Ideal for investors & first time buyers
- Open plan lounge/dining room
- Private yard
- Double Glazing
- Council Tax Band A





This floorplan is only for illustrative purposes and is not to scale. Measurements of rooms, doors, windows, and any items are approximate and no responsibility is taken for any error, omission or mis-statement. Icons of items such as bathroom suites are representations only and may not look like the real items. Made with Made Snappy 360.

This mid-terraced home is located in a popular location, sought after by younger buyers, investors and also those looking to downsize. Several amenities are close by, including a community centre, fish & chip takeaway, convenience store, chemist and bus service etc. The living accommodation is accessed via the hallway which leads you into an open plan lounge/dining room with stepped access into the kitchen. The split-level landing leads to two bedrooms and a 3-piece bathroom suite. There is a GCH system, Double Glazing, an enclosed yard and no upper chain.



Visit us at
www.pooletownsend.co.uk
enquiries@pooletownsend.co.uk

We are open
 Monday – Friday 9.00 – 5.00
 Saturday 9.00 – 1.00

Barrow 01229 811811
 Ulverston 01229 588111
 Grange 015395 33316
 Kendal 01539 734455
 Milnthorpe 015395 62044