



46 Great William Street, Stratford-Upon-Avon

Guide Price **£260,000**

46 Great William Street

Stratford-Upon-Avon, Stratford-Upon-Avon

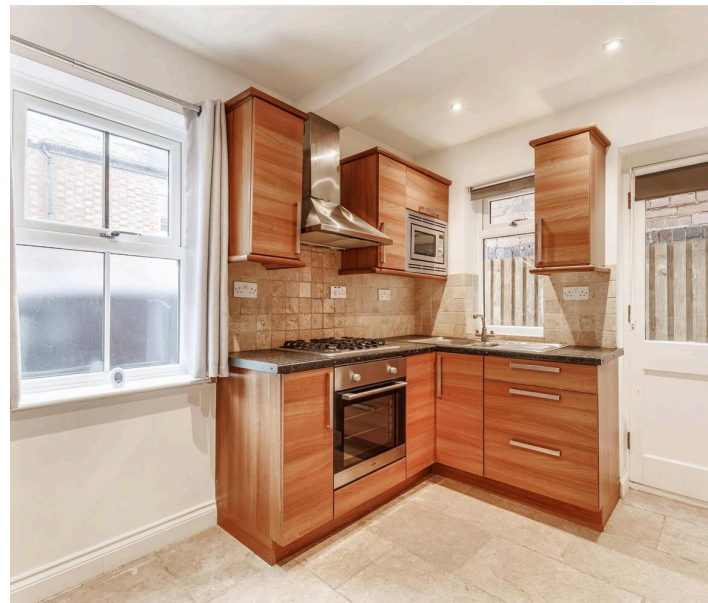
Charming two-bedroom character home near Stratford-upon-Avon centre, with original features, modern bathroom, off-road parking, and no onward chain. Ideal for first-time buyers or investors. Council Tax band: C

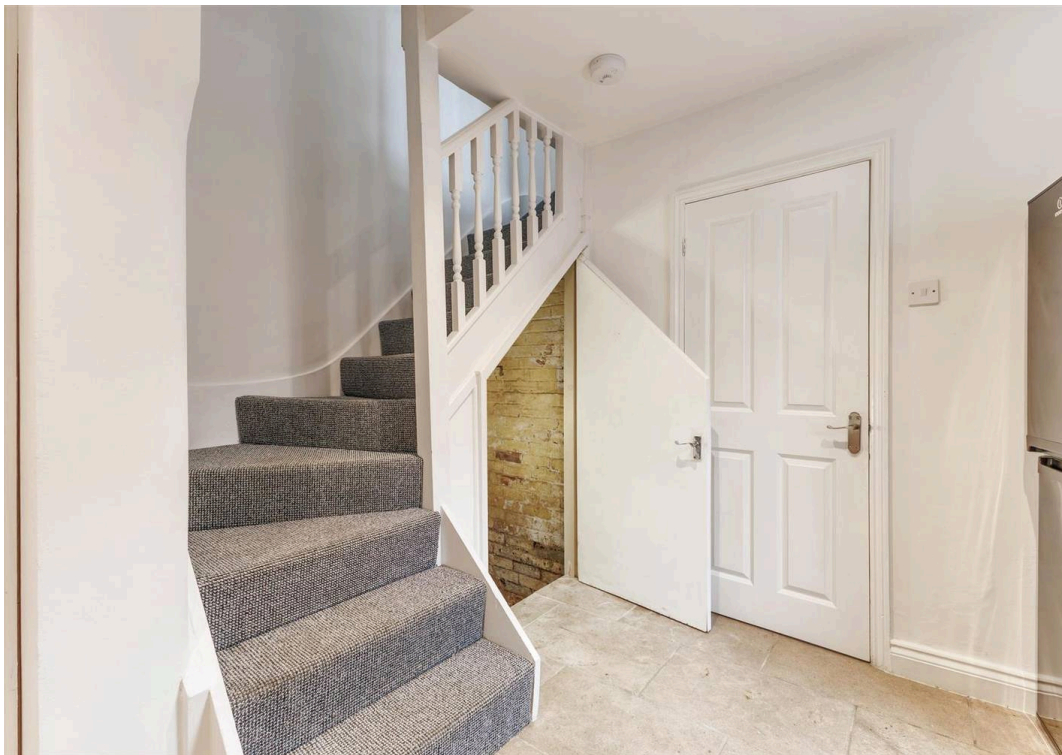
Tenure: Freehold

EPC Energy Efficiency Rating: D

EPC Environmental Impact Rating: E

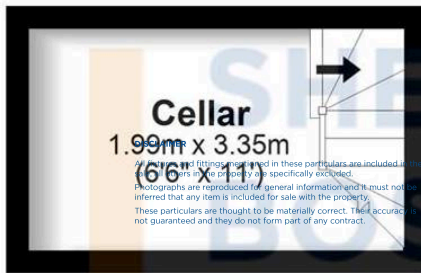
- Charming Character Property
- Central Location
- Off Road Parking
- Period Features Throughout





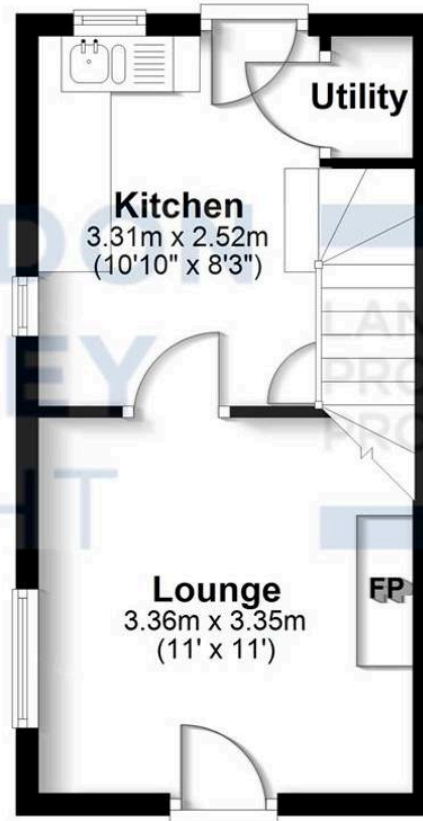
Basement

Approx. 6.6 sq. metres (71.6 sq. feet)



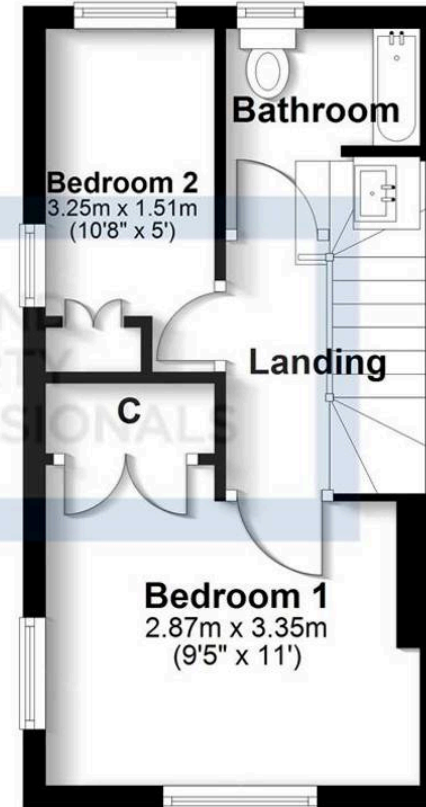
Ground Floor

Approx. 22.7 sq. metres (244.2 sq. feet)



First Floor

Approx. 22.7 sq. metres (244.2 sq. feet)



Total area: approx. 52.0 sq. metres (559.9 sq. feet)

All efforts have been made to ensure the measurements are accurate on this floor plan, however these are for guidance purposes only.
Plan produced using PlanUp.

Sheldon Bosley Knight Stratford-Upon-Avon

Sheldon Bosley Knight, 35-36 Rother Street - CV37 6LP

01789387887 · stratfordsales@sheldonbosleyknight.co.uk · www.sheldonbosleyknight.co.uk/

DISCLAIMER

All fixtures and fittings mentioned in these particulars are included in the sale, all others in the property are specifically excluded.

Photographs are reproduced for general information and it must not be inferred that any item is included for sale with the property.

These particulars are thought to be materially correct. Their accuracy is not guaranteed and they do not form part of any contract.