



## Maida Vale, W9

£650,000

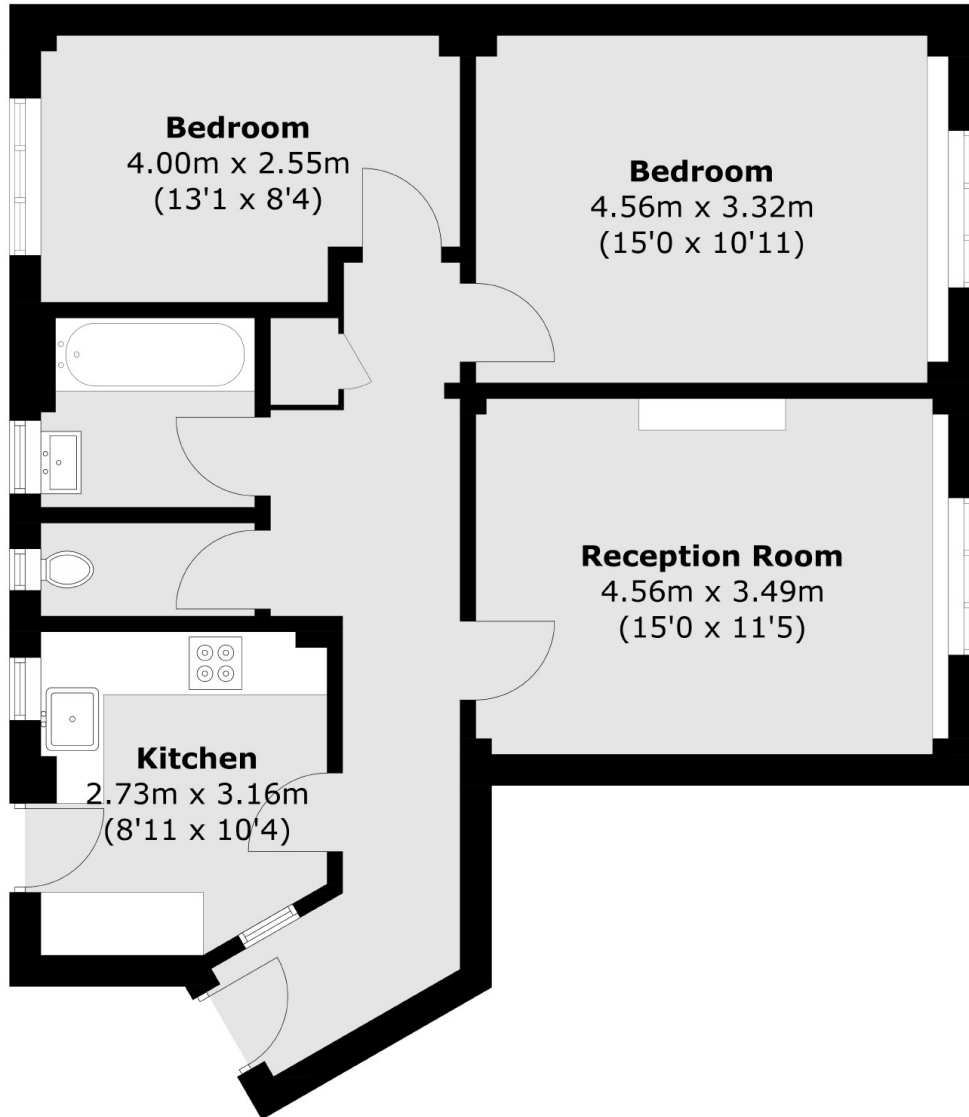
This beautifully presented two-bedroom apartment is located in a portered building in Maida Vale. Positioned on the seventh floor with lift access, the property boasts abundant natural light and wood flooring throughout. The flat features a spacious reception room, a fully integrated kitchen, two bedrooms, a family bathroom, a cloakroom, and plenty of storage space.

Florence Court is a quaint development in Maida Vale, conveniently situated near the amenities on Elgin Avenue, Maida Vale station (Bakerloo Line), and Paddington Recreation Ground.

### Features

- Great Transport Links
- Seventh Floor
- Porter & Lift Access
- Recently Renovated
- Prime Location
- Long Lease Length

# Maida Vale, Maida Vale, W9



Total area (approx.): 69.0 sq. m (742.7 sq. ft)