



**Nelson Road, SW19**

£1,100,000

**Dexters**



## Nelson Road, SW19

Undoubtedly one of the finest three double bedroom Victorian houses within the 'Battles'. This outstanding property has been extended to the rear and loft, and is presented in immaculate condition and contemporary style throughout.

The ground floor has been thoughtfully arranged with a utility room and w/c. The open plan layout combines a reception room to the front of the house, a versatile dining/living space, and a bespoke kitchen. Large Velux windows and bi-folding doors provide stunning natural light at the rear of the property.

The first floor has two double bedrooms, both with built in wardrobes and shutters. The bathroom is a perfectly fitted four piece suite, with a free standing shower. From the landing, stairs lead to the superb master bedroom and luxury en suite.

A particular highlight is the beautiful west facing garden. Designed to bloom in all seasons, it offers privacy from neighbouring properties, a patio for al fresco dining, and rear access to the street.

Nelson Road is located in the sought after area of South Wimbledon. There are fantastic transport links and a lively High Street with a selection of shops, bars, restaurants, cinema and theatre.

### Features

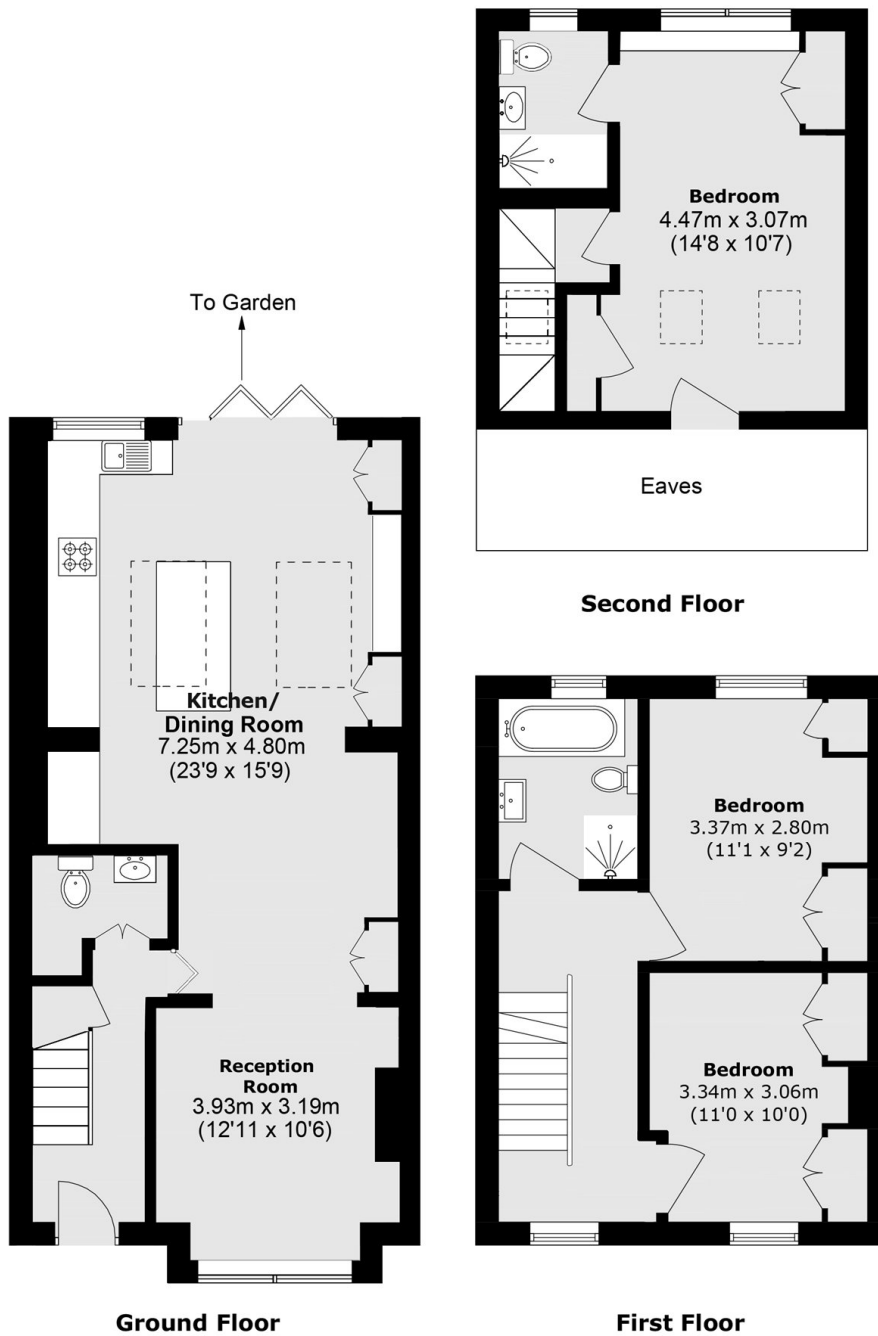
- Three Double Bedrooms
- Two Bathrooms
- W/C And Utility Room
- West Facing Garden
- Open Kitchen/Dining
- Ample Built-In Storage







# Nelson Road, London, SW19



Total area (approx.): 108.2 sq. m (1,164.0 Sq. ft)  
(Excluding Eaves)