





53a Shipbrook Road

Rudheath, Northwich

Beautifully presented three bedroom detached home, close to local amenities.

Council Tax band: D

Tenure: Freehold

EPC Energy Efficiency Rating: D

EPC Environmental Impact Rating: D

- Detached Family Home
- Three Double Bedrooms
- Modern Bathroom
- Lounge & Separate Dining Room
- Spacious Driveway
- Garage
- Conservatory
- Rear Garden
- Close to Local Amenities

Lounge

Dining Room

Kitchen

Conservatory

Landing

Master Bedroom

Bedroom Two

Bedroom Three

Bathroom

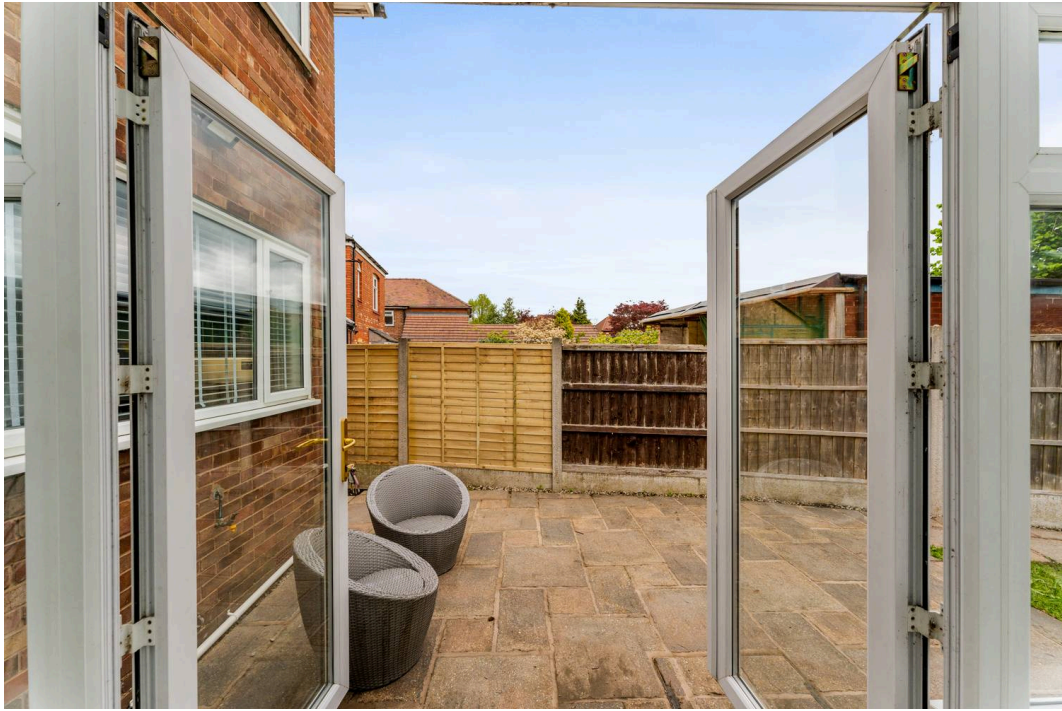














**53a Shipbrook Road,
Northwich**

DETAILS

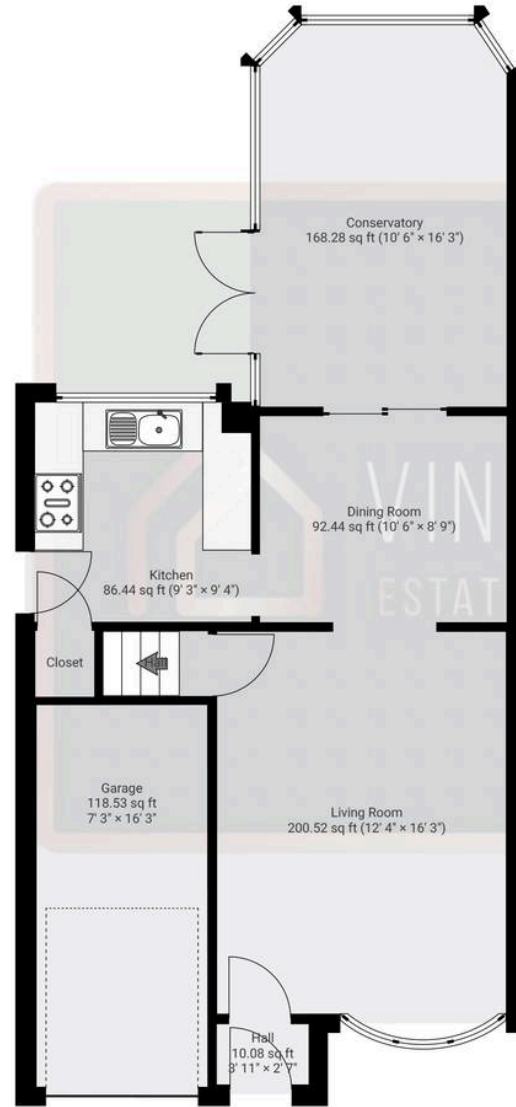
Total area: 1181.64 sq ft
Living area: 1063.12 sq ft
Floors: 2
Rooms: 14

THIS FLOORPLAN IS PROVIDED WITHOUT WARRANTY OF ANY KIND. VINCENT JAMES ESTATE AGENCY DISCLAIMS ANY WARRANTY INCLUDING, WITHOUT LIMITATION, SATISFACTORY QUALITY OR ACCURACY OF DIMENSIONS.



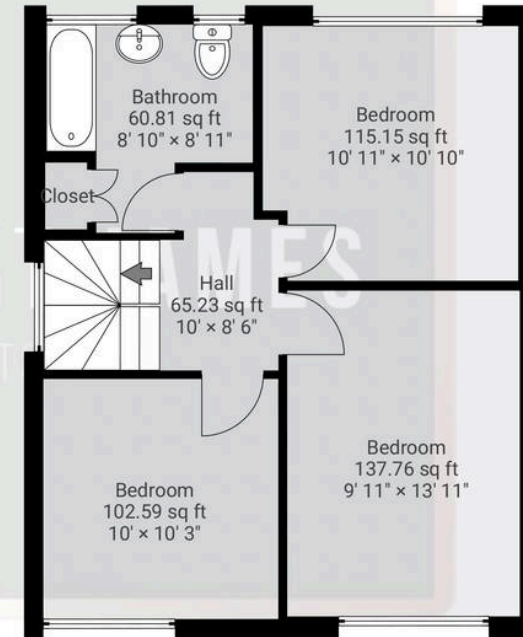
▼ Ground Floor

TOTAL AREA: 695.34 sq ft • LIVING AREA: 576.81 sq ft • ROOMS: 8



▼ 1st Floor

TOTAL AREA: 486.31 sq ft • LIVING AREA: 486.31 sq ft • ROOMS: 6



Vincent James Estate Agents

87 Witton Street, Northwich – CW9 5DR

01606663939 • hello@vincentjamesestateagents.co.uk • www.vincentjamesestateagents.co.uk/