



Carrallack Terrace, St Just TR19

£425,000



ANDREW
EXELBY
ESTATE AGENTS

Carrallack Terrace, St Just TR19

Deceptively spacious three double bedroom & two bathroom cottage with two reception rooms, kitchen, plus laundry and utility. There are fully enclosed gardens to the front and rear - with the front of the cottage facing on to Carrallack Terrace; a most pleasant and safe traffic-free terrace close to St Just town centre.





DESCRIPTION

Behind its handsome double-fronted façade, lies a deceptively spacious and extremely well presented cottage on a sought after traffic free terrace in St Just. Offering incredibly flexible living options, this characterful cottage is a very rare find.

On either side of the property at the front, are two equally inviting reception rooms; both boasting woodburning stoves and original pine doors that have been dipped and stripped to ensure this cottage retains its character. The central hallway similarly has a stained glass-panelled door separating it from the entrance porch.

The kitchen has been much improved with a smart range of units, and a, mostly glass, rear porch/sunroom area at the rear. There are then two further utility room areas, with worktops and the boiler which was replaced in 2017. A very useful and nicely finished shower room has been installed at the rear downstairs; offering flexibility for families needing two bathrooms.

As you move upstairs, you pass a window with stylish plantation shutters to arrive on the larger than expected landing - a very light and airy space. All three bedrooms are good-size double bedrooms, with the two at the front being very spacious with views down towards the sea between rooftops.

The family bathroom upstairs is a particular feature, having been extensively refurbished; now offering a luxurious, freestanding bath, and separate shower. While modern, the bathroom like all principal rooms, boasts its original, stripped pine door.



HALLWAY

SITTING ROOM

4.26m x 3.13m (13'11" x 10'3")

Fireplace with woodburning stove and solid slate hearth. Bespoke, built-in cabinets and shelving. uPVC double glazed window to front. Original, stripped pine door, original door architrave and coving to ceiling. Radiator. Carpet.

DINING ROOM

4.2m x 2.68m (13'9" x 8'9")

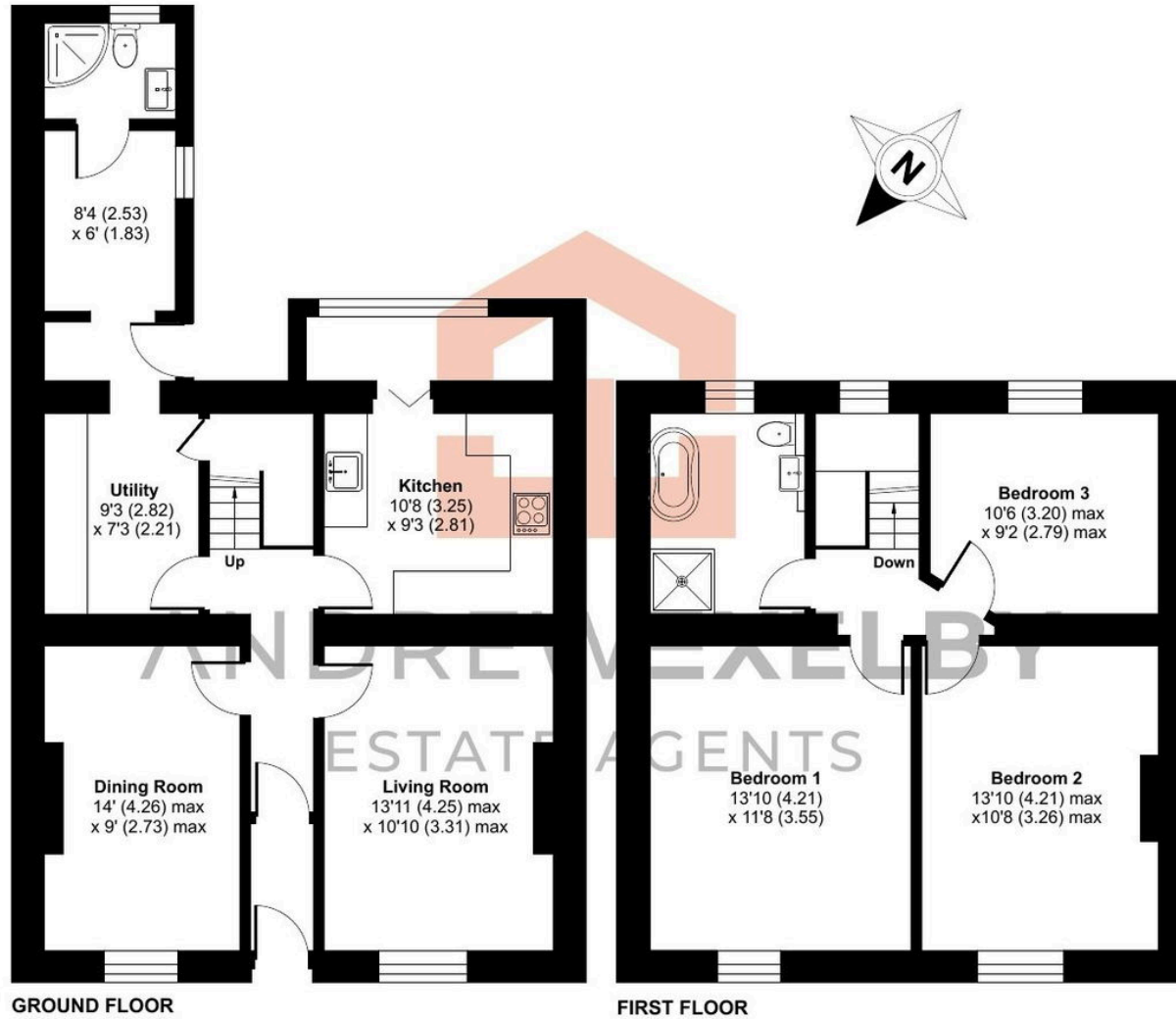
Fireplace with inset woodburning stove. uPVC double glazed window to front. Original, stripped pine door, original door architrave and coving. Radiator. Carpet.



Carrallack Terrace, St. Just, Penzance, TR19

Approximate Area = 1257 sq ft / 116.7 sq m

For identification only - Not to scale



 Floor plan produced in accordance with RICS Property Measurement 2nd Edition, Incorporating International Property Measurement Standards (IPMS2 Residential). © n1che.com 2025. Produced for Andrew Exelby Estate Agents. REF: 1309263