



3506 Harcourt Tower 67 Marsh Wall, London, E14 9ZB
£4,500 Per month



3506 Harcourt Tower 67 Marsh Wall, London, E14 9ZB

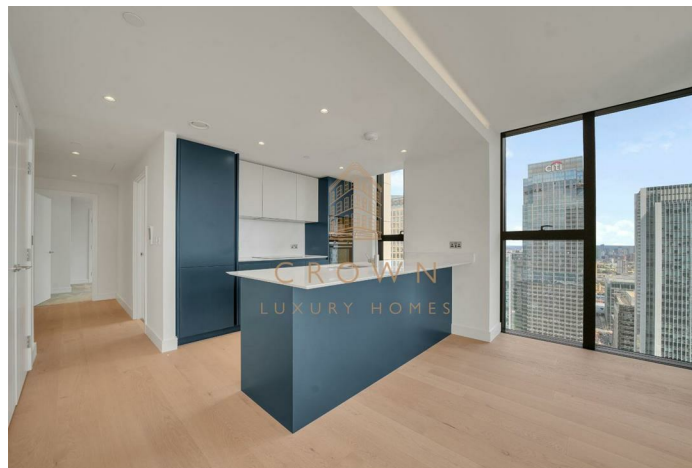
£4,500 Per month

Available in August | Furnished/Unfurnished* | 35th Floor | Incredible Views | Concierge | Gym | Swimming Pool | Cinema Room | Lounges | Great Transport Links | WeChat: CLH-Consultant.

Description



Situation

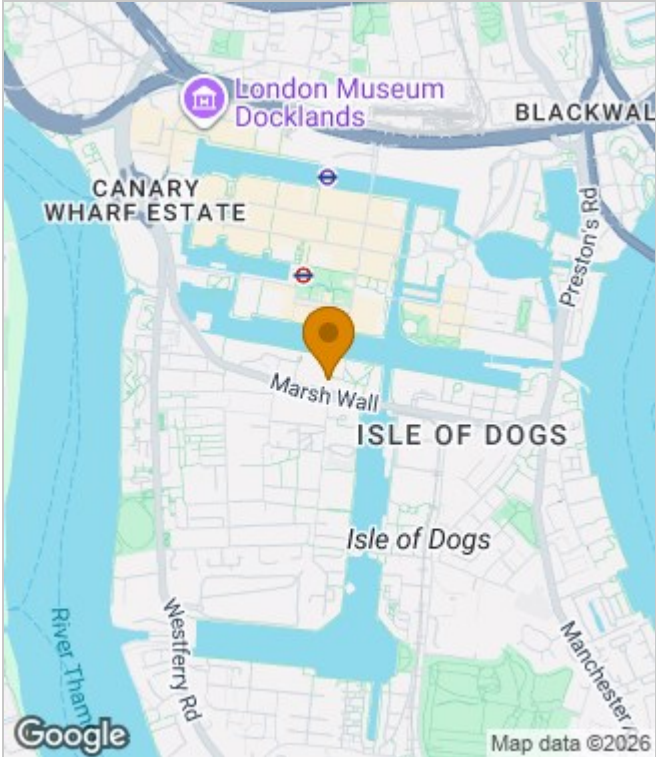


Unfurnished
Council Tax Band: F
Available: 1st August 2026

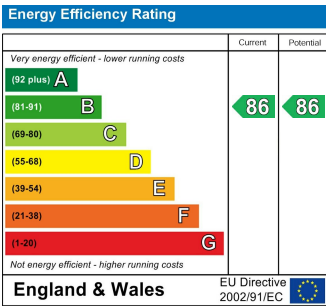
Floor Plans



Area Map



Energy Performance Graph



These particulars, whilst believed to be accurate are set out as a general outline only for guidance and do not constitute any part of an offer or contract. Intending purchasers should not rely on them as statements of representation of fact, but must satisfy themselves by inspection or otherwise as to their accuracy. No person in this firms employment has the authority to make or give any representation or warranty in respect of the property.