



Lovelace Road, KT6

£2,095 Per calendar month

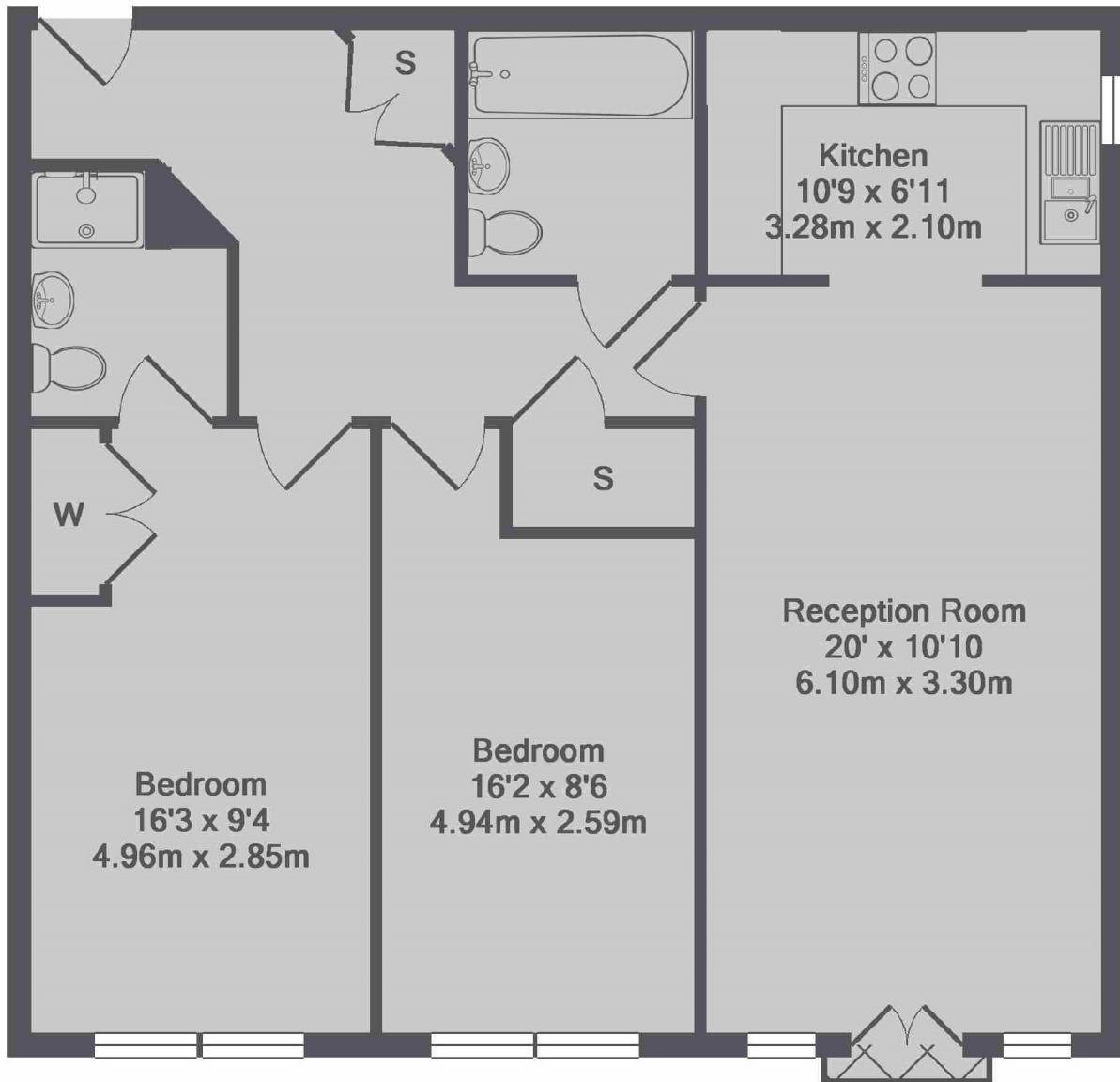
An apartment that has been finished to a high standard throughout. Accommodation includes a spacious living/dining room, a modern kitchen, two double bedrooms and allocated gated parking.

Albany House is on Lovelace Road, less than a mile away from Surbiton High Street, the desirable Maple Road and the River Thames.

Features

Finished To High Standard
Spacious Living Area
Modern Kitchen
Two Double Bedrooms
Allocated Parking
Central Location

Lovelace Road,
Surbiton, KT6



Lovelace Road, KT6
Total Approx. Floor Area 771 Sq.Ft. (71.7 Sq.M.)