



LIVERPOOL GROVE, SE17

£875,000

Freehold
Gated development
Off-street parking
Chain free
Courtyard garden
High ceilings

@marshandparsons
marshandparsons.co.uk

MARSH &
PARSONS



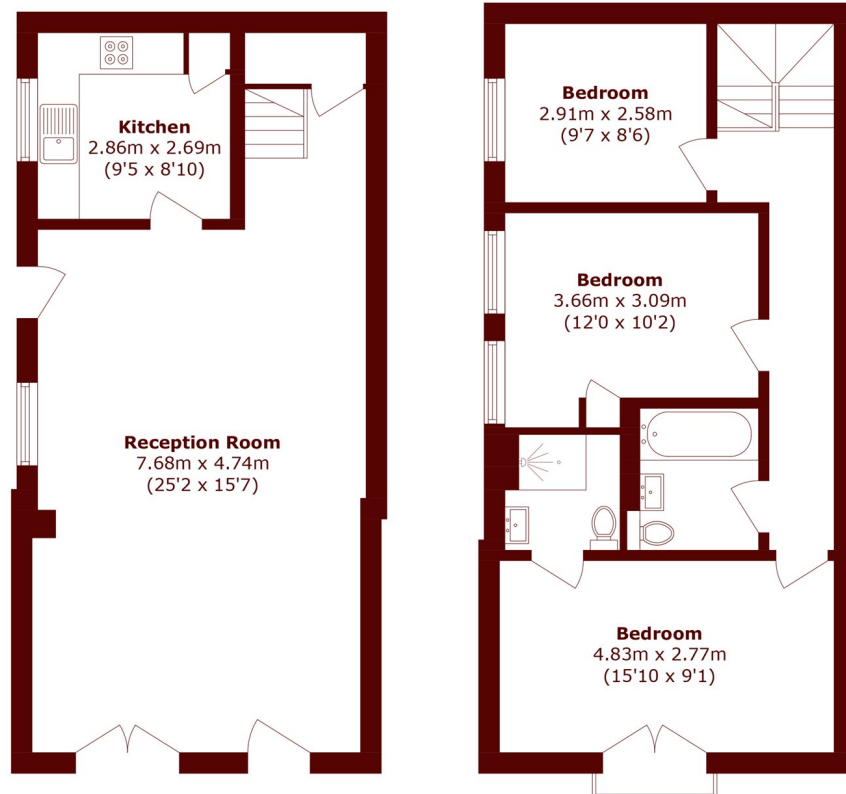
ABOUT THE PROPERTY

A stylish three bedroom, two bathroom freehold house set within a private gated development, offering excellent proportions and an abundance of natural light. Arranged over two floors, the property features a spacious reception and dining area alongside a contemporary kitchen. The bedrooms benefit from striking vaulted ceilings, with the principal bedroom enjoying a sleek en suite. A modern family bathroom serves the remaining bedrooms. Further benefits include private off-street parking and a courtyard garden.

Ideally positioned moments from Burgess Park, close to the amenities of Walworth Road, and within easy reach of Elephant & Castle and Kennington station.



STEP INSIDE LIVERPOOL GROVE



Ground Floor

First Floor

Total area (approx.): 99.4 sq. m (1070.0 sq. ft)

Kennington
020 7587 1533

Energy Rating: D We aim to make our particulars both accurate and reliable. However, they are not guaranteed; nor do they form part of an offer or contract. If you require clarification on any points then please contact us, especially if you're traveling some distance to view. Please note that appliances and heating systems have not been tested and therefore no warranties can be given as to their good working order

**MARSH &
PARSONS**