



## FLEETWOOD ROAD, NW10

£4,500 per month

Five bedrooms  
Two bathrooms  
Two reception rooms  
Semi detached house  
Garden  
Off street parking

@marshandparsons  
marshandparsons.co.uk

MARSH &  
PARSONS



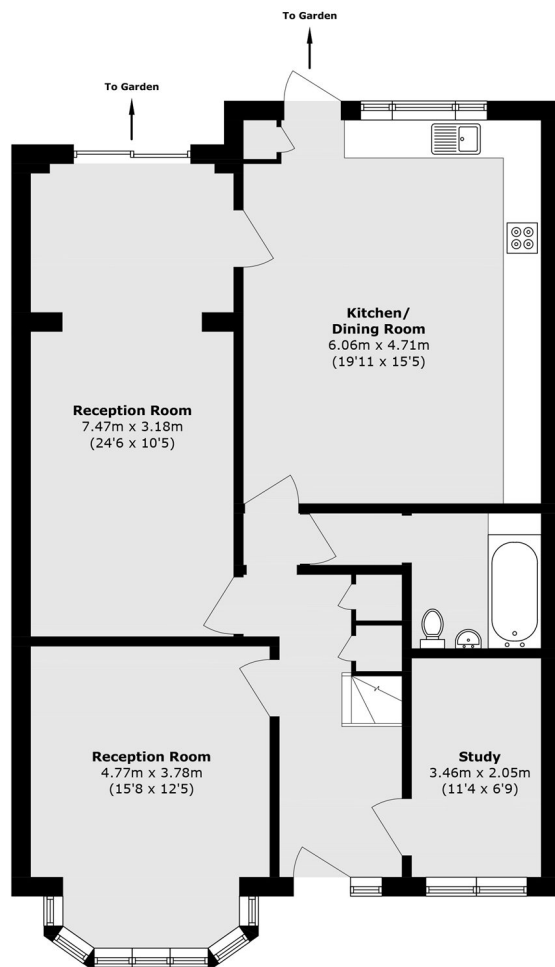
# ABOUT THE PROPERTY

This five bedroom two bathroom semi detached family home, spread over two floors offers a spacious and entertaining living space with an integrated kitchen, private rear garden and off street parking.

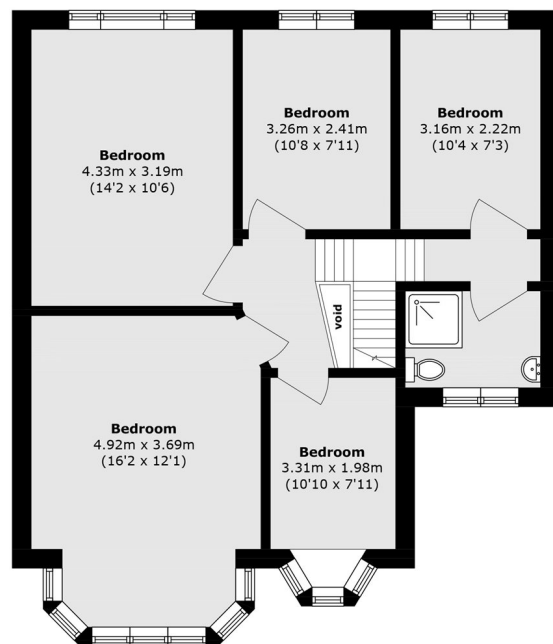
Fleetwood Road is located within walking distance to Dollis Hill Underground Station & Willesden Green Underground Station (Jubilee Line) and within easy reach of local amenities and Gladstone Park.



# STEP INSIDE FLEETWOOD ROAD



**Ground Floor**



**First Floor**

Total area (approx.): 160.5 sq. m (1727.6 sq. ft)  
(Excluding Void)

**Willesden Green**  
020 8939 1780

Energy Rating: C We aim to make our particulars both accurate and reliable. However, they are not guaranteed; nor do they form part of an offer or contract. If you require clarification on any points then please contact us, especially if you're traveling some distance to view. Please note that appliances and heating systems have not been tested and therefore no warranties can be given as to their good working order

**MARSH &  
PARSONS**