

# Sculptor Crescent, Stockton-On-Tees



Asking Price £195,000









Attractive and modern throughout, whilst enjoying a generous rear garden, extended parking and side garage - this modern three bedroom property certainly merits early inspection.

Built by 'Bellway Homes' and situated on the popular 'Queensgate' development, this spacious, three bedroom semi-detached property is built to one of the larger designs originally available. Delivering well-planned and spacious accommodation that is 'well-finished' and modern throughout.

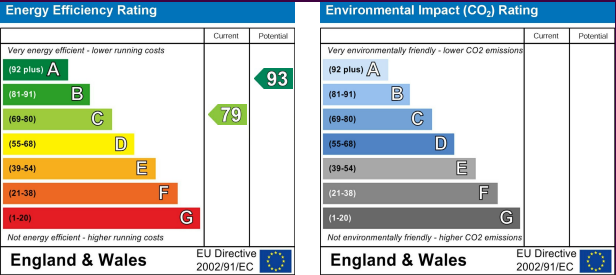
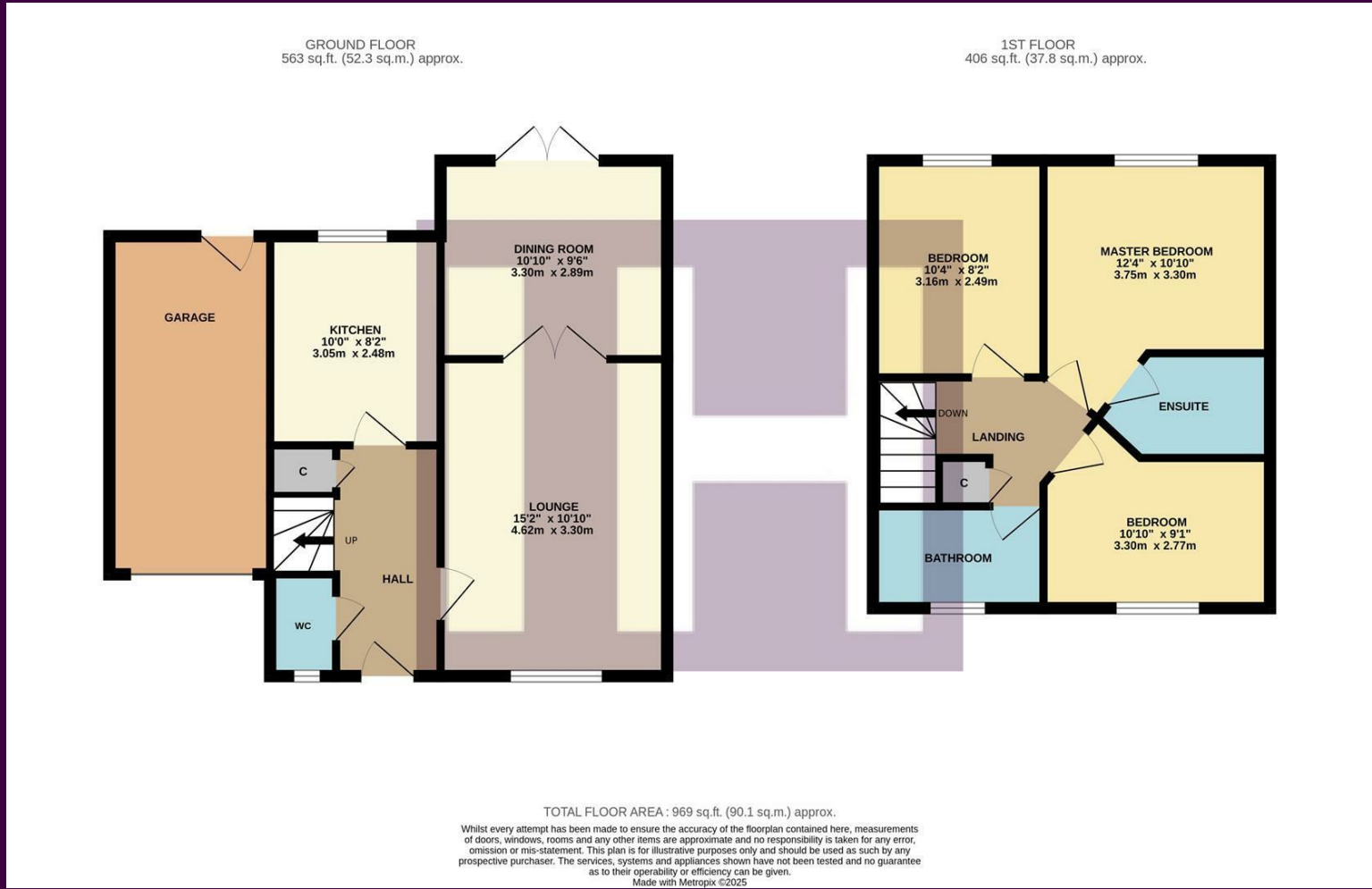
The three generous bedrooms are a particular feature, along with the separate living areas on the ground floor consisting of a generous lounge, dining room with 'French' doors to the garden, and fitted, modern kitchen.

Briefly, the accommodation comprises an entrance hall, cloakroom/WC, independent lounge, dining room and kitchen to the ground floor. The first floor brings the three bedrooms, 'Master' with ensuite and separate family bathroom.

The generous rear garden is fully fence enclosed, with generous well-tended lawn, near end patio, and shed. The front parking has been extended to allow an extra vehicle, whilst the side drive approaches the garage.



# The Layout



# The Location



Council Tax Band: C  
Tenure: Freehold





- Larger-style three bedroom property on the popular 'Queensgate' development
- Spacious and impressive throughout, viewing essential
- Generous rear garden, extended parking, drive and garage
- Separate lounge, dining room and modern kitchen
- Available with 'No Forward Chain'
- Master bedroom with ensuite