



## St. Luke's Avenue, SW4 £400,000

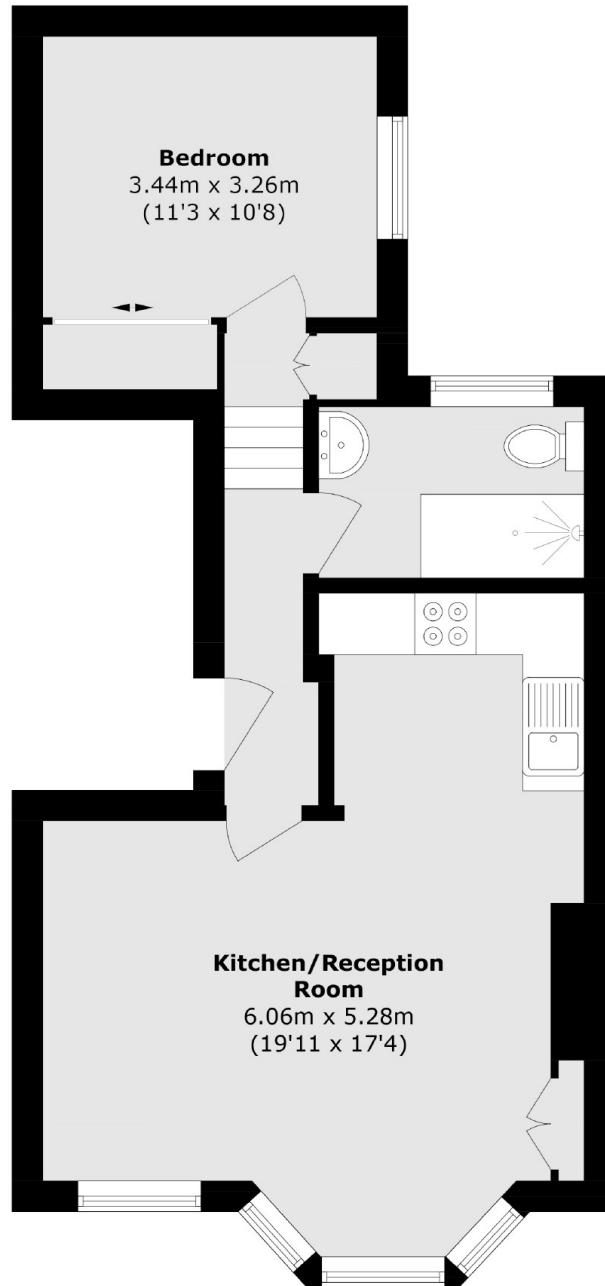
A stylish and well-presented first-floor flat featuring a bright open-plan reception with modern kitchen, double bedroom, and contemporary bathroom. Set within a charming period building, this turnkey home offers elegant living in a desirable location. The property will be sold Chain free.

St Lukes Avenue is located just off Clapham High Street, close to Clapham Old Town and Clapham Common with vibrant and bustling cafes, restaurants and bars located just around the corner, and only 0.2 miles from Clapham North and Clapham High (Northern Line).

### Features

- Period Conversion
- First Floor
- Open Plan Reception
- Modern Kitchen
- Double Bedroom
- Long Lease

# St. Luke's Avenue, London, SW4



Total area (approx.): 45.5 sq. m (489.7 sq. ft)