



60 Halbullock View, Gloweth, TR1 3WN

£1,275 Per Month

A nicely presented, light and neutral three-bedroom semi-detached house in a setback position, close to Truro College and Royal Cornwall Hospital.

To the ground floor, the property comprises of spacious lounge with feature fireplace and patio doors opening on to a large enclosed rear garden with gate access, a modern fitted kitchen with space for appliances and WC.

To the first floor is the master double bedroom with en-suite shower room, two further bedrooms one double and one large single and a three-piece family bathroom.

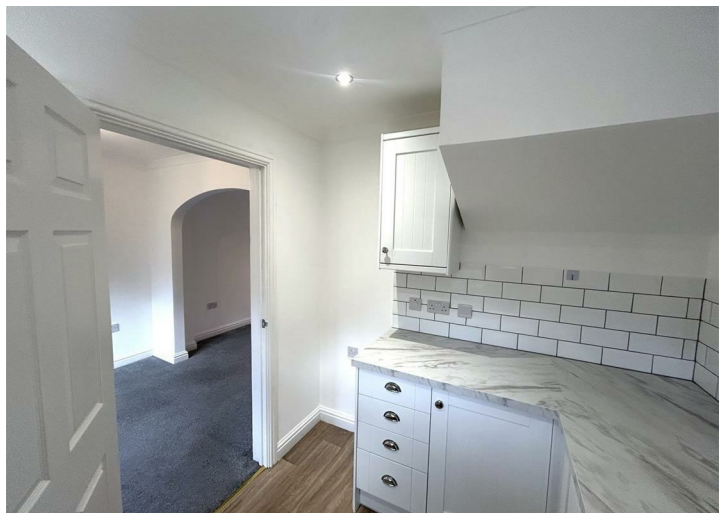
The property benefits from one allocated parking space, gas central heating and double glazing. Offered on an unfurnished basis for a long term let from the middle of October.

EPC band C. Council Tax Band C. Holding deposit equivalent to one weeks' rent, payable upon acceptance. Security deposit equivalent to five weeks' rent.

Broadband checker: ofcom.org.uk/phones-telecoms-and-internet/advice-for-consumers/advice/ofcom-checker

Key Features

- Light and neutral 3 bedroom semi-detached house
- Large rear garden
- Master ensuite
- Long term unfurnished let
- Council tax band C
- Situated close to Truro College and Royal Cornwall Hospital
- Allocated parking space
- Gas central heating
- EPC band C



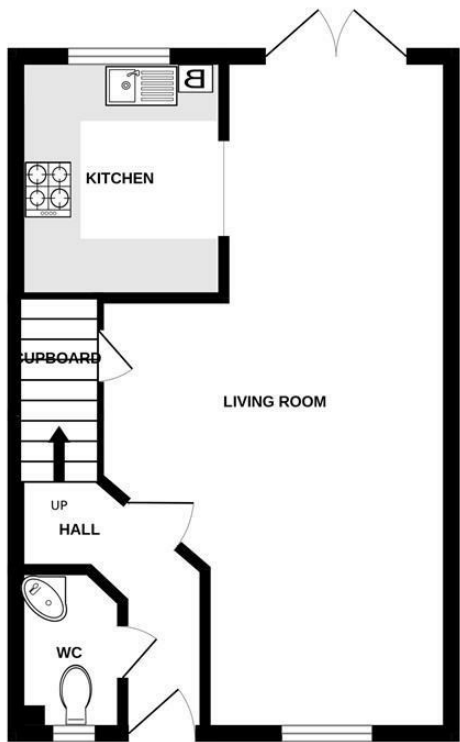




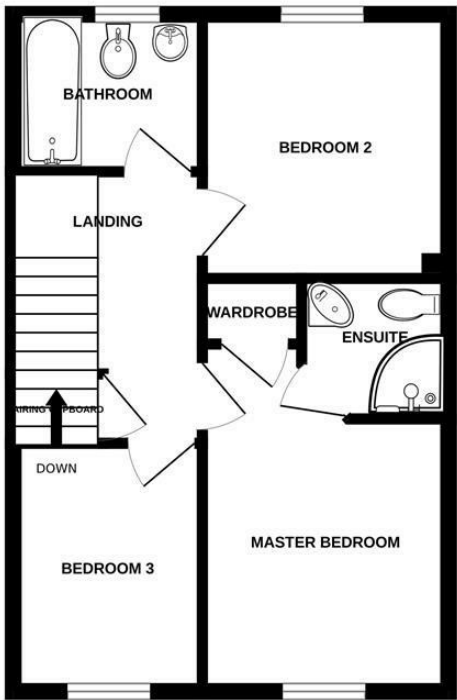


Floor Plan

GROUND FLOOR



1ST FLOOR



60, HALBULLOCK VIEW, GLOWETH,TRURO,TR13WW

TOTAL FLOOR AREA : 743sq.ft. (69.0 sq.m.) approx.

Whilst every attempt has been made to ensure the accuracy of the floorplan contained here, measurements of doors, windows, rooms and any other items are approximate and no responsibility is taken for any error, omission or mis-statement. This plan is for illustrative purposes only and should be used as such by any prospective purchaser. The services, systems and appliances shown have not been tested and no guarantee as to their operability or efficiency can be given.

Made with Metropix ©2025