



Lilies Avenue, Castle View Court, Eastbourne Road, Pevensey, East Sussex, BN24 6BD

£225,000

🛏️ 2 🚿 2 🚗 1



- OMAR Ikon Design
- Luxurious 45'x20' Home
- Sought After Residential Park
- Two Double Bedrooms
- Ensuite To The Master Bedroom
- Part-Vaulted Ceilings
- Impressive Kitchen/Dining Room
- Bright and Spacious Living Room
- No Stamp Duty To Pay
- Garden, Decked Area And Driveway

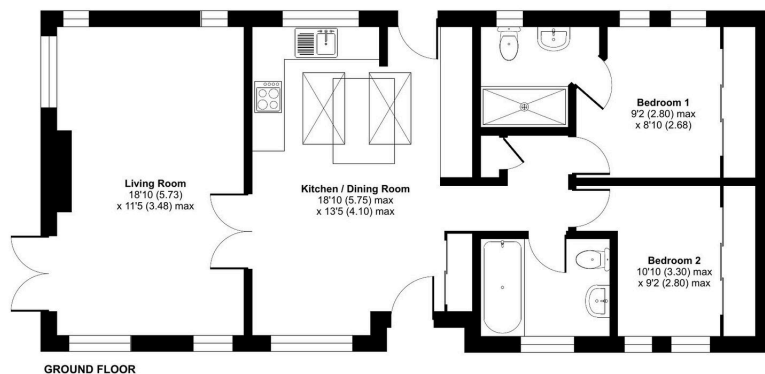


A luxurious and spacious two double bedroom (45'x20') park home bungalow located on this sought after residential park right on the South Coast near Pevensey. This 'Ikon' design offers that 'WOW' factor that may homes lack with an impressive, fully fitted Kitchen/Dining Room, spacious and bright Living Room which opens up onto an enclosed decked patio, two double bedrooms, both having built in wardrobes and the master having an ensuite shower room and a further guest bathroom compliments these rooms. Outside, there are lawned gardens to the side and rear and a blocked paved driveway to one side with parking for two cars. This home is exceptional, priced to sell and there is no onward chain.



Lilies Avenue, Pevensey Bay, Pevensey, BN24

Approximate Area = 793 sq ft / 73.6 sq m
For identification only - Not to scale



GROUND FLOOR

Floor plan produced in accordance with RICS Property Measurement 2nd Edition, incorporating International Property Measurement Standards (IPMS2 Residential). © richvecom 2025. Produced for The Park Home Agency Ltd. REF: 1375428



01793 230185

sales@theparkhomeagency.co.uk

Agents Notes: All measurements are approximate and quoted in metric with imperial equivalents and for general guidance only and whilst every attempt has been made to ensure accuracy, they must not be relied on. The fixtures, fittings and appliances referred to have not been tested and therefore no guarantee can be given that they are in working order. Internal photographs are reproduced for general information and it must not be inferred that any item shown is included with the property. For a free valuation, contact the numbers listed on the brochure