



3 Abbey Gardens, London  
London

In Excess of £350,000  
OLIVER *OJ* JAQUES  
EST. 1986

# 3 Abbey Gardens

London, London

Council Tax band: C

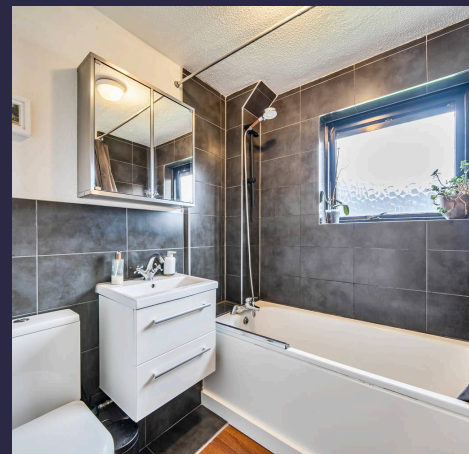
Tenure: Freehold

EPC Energy Efficiency Rating: C

EPC Environmental Impact Rating: C

- Freehold house
- Rear garden
- Communal gardens
- Allocated parking
- 0.6m Bermondsey Station
- 0.6m Southwark Park
- 0.4m Bermondsey Spa Gardens

Estate Charge £350 Per Year



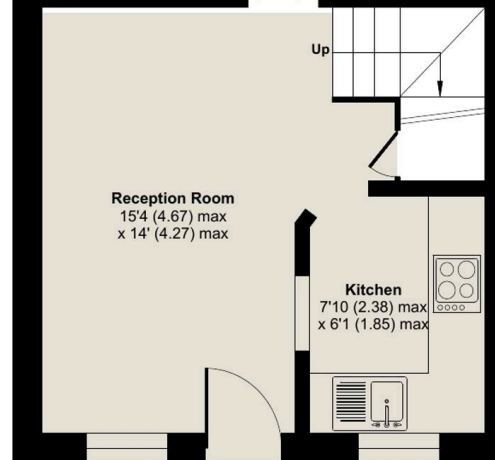
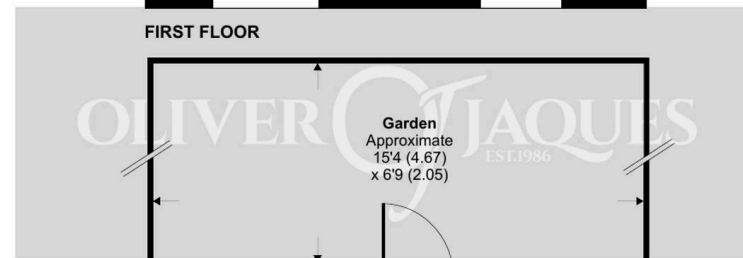
# Abbey Gardens, London, SE16

Approximate Area = 430 sq ft / 39.9 sq m

For identification only - Not to scale



FIRST FLOOR



GROUND FLOOR





## Oliver Jaques

Oliver Jaques, 229-231 Lower Road - SE16 2LW

02072315050 • southeast@o-j.co.uk • o-j.co.uk/

Every care has been taken with the preparation of this brochure but it is for general guidance and complete accuracy can't be guaranteed. Prospective purchasers should seek clarification from their solicitor. The mention of any appliances fixtures or fittings does not imply they are in working order.