

TO  
LET

£1,400 Per Month

Blount Road, Portsmouth, PO1 2TN



## HIGHLIGHTS

- SPACIOUS TWO BEDROOM APARTMENT
- CENTRAL SOUTHSEA
- MODERN BATHROOM
- KITCHEN WITH ALL WHITE GOODS INCLUDED
- GREAT VIEWS
- BALCONY
- TWO DOUBLE BEDROOMS UNFURNISHED
- AVAILABLE FROM EARLY MAY
- MODERN INTERIOR



Nestled on Blount Road in the vibrant city of Portsmouth, this well-presented apartment offers a delightful living experience. With two spacious bedrooms and a modern fitted bathroom, this property is perfect for individuals or small families seeking comfort and style.

As you enter, you will be greeted by a bright and airy reception room that creates a welcoming atmosphere. The large windows allow natural light to flood the space, enhancing the overall sense of openness. One of the standout features of this apartment is the charming balcony, which provides stunning views, making it an ideal spot to unwind after a long day or enjoy your morning coffee.

Although the apartment is unfurnished, it comes equipped with essential white goods including fridge freezer, washing machine and dishwasher, ensuring you have everything you need to settle in comfortably. The layout is thoughtfully designed, offering a great size for modern living while maintaining a cosy feel.

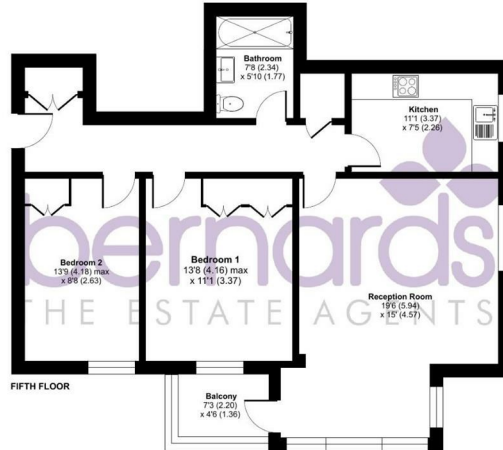
This property is not just a home; it is a lifestyle choice, situated in a desirable location that combines convenience with scenic beauty. Don't miss the chance to make this lovely space your own.



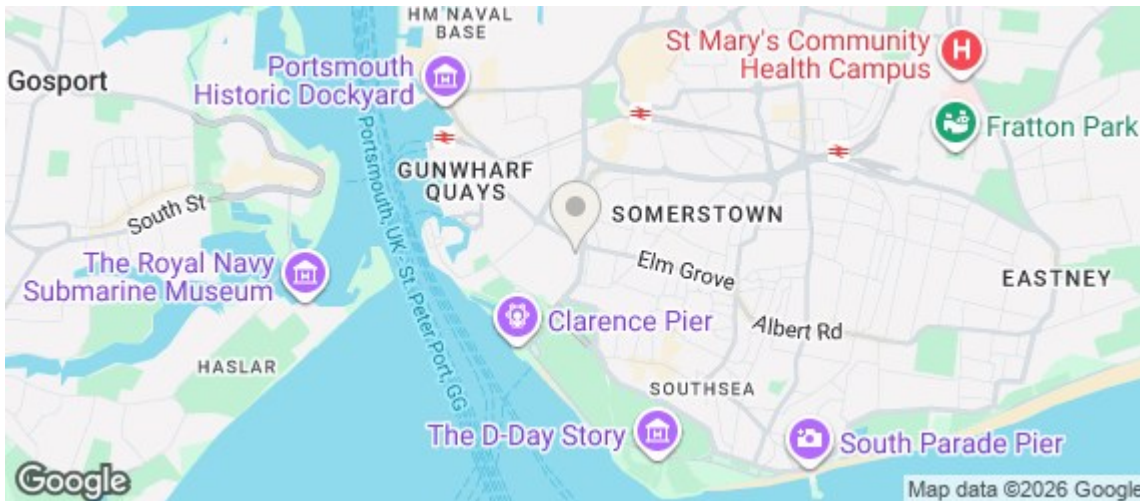
**Hartford House, Blount Road, Portsmouth, PO1**

Approximate Area = 823 sq ft / 76.4 sq m (excludes balcony)

For identification only - Not to scale



Floor plan produced in accordance with RICS Property Measurement 2nd Edition, Floorplaning International Property Measurement Standards (IPMS2 Residential). Produced for Bernards Estate and Letting Agents Ltd. REF: 1441601. © richroom 2026.



Energy Efficiency Rating		Current	Potential
Very energy efficient - lower running costs			
(92 plus) <b>A</b>			
(81-91) <b>B</b>			
(69-80) <b>C</b>			
(55-68) <b>D</b>			
(39-54) <b>E</b>			
(21-38) <b>F</b>			
(1-20) <b>G</b>			
Not energy efficient - higher running costs			
<b>England &amp; Wales</b>		EU Directive 2002/91/EC	

