



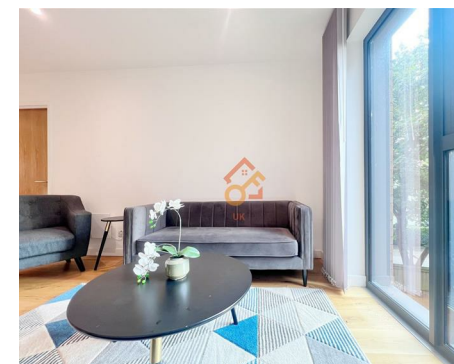
Let **UK** Home

2 Bedrooms

Flat

**Located
in Birmingham**

£1,600 Per Month



padmin@letukhome.co.uk

<https://www.letukhome.co.uk/>

0121 828 8955



40 Windmill Street Birmingham

B1 1GA



Let UK Home are excited to offer this spectacular two bedroom apartment in the heart of The Axium, the sought-after location of central Birmingham.

This property comprises a large bright open plan kitchen and living room, two double bedrooms with wardrobes (master en-suite), a large family sized bathroom and ample storage.

Residents of this exceptional development will have exclusive use of the private screening room, reception room and public terrace. Furthermore, residents will also benefit from a concierge and an unrivalled selection of shops, bars, restaurants, leisure facilities and beautiful courtyards. Additionally, parking spaces are available.

The apartment is adjacent to Birmingham New Street Station and the business district, within walking distance to Chinatown, and close to the new business district Arena Central and the large-scale redevelopment area Paradise. There are complete retail stores, restaurants, banks, and supermarkets surrounding the apartment. The large shopping malls Bullring & Grand Central and Mailbox, as well as many department stores including Selfridges, House of Fraser, John Lewis, M&S, etc. are all within walking distance of the apartment.

Within walking distance to the city center, New Street Station, Moor Street, and Snow Hill Station, making it convenient to reach various destinations. Nearby are several well-known universities such as the University of Birmingham, Aston University, and Birmingham City University.

40 Windmill Street Birmingham

£1,600 Per Month



- 1st Floor
- 24h Security
- Reception Room
- EPC Rating: B
- Concierge Service
- Cinema & Game Room
- Parking Space



APARTMENT STYLE 6

SPECIFICATION

- 2 bedroom - 2 bathroom
- Apartment size 688.9 sq ft

ROOM DIMENSIONS

- Living/kitchen/dining room 279.9 sq ft
- Bedroom 1 16.2 x 9.2 ft
- Ensuite 6.9 x 8.7 ft
- Bedroom 2 11.9 x 10.0 ft
- Bathroom 7.4 x 6.9 ft

APARTMENT AVAILABLE ON

Garden | First | Second | Third | Fourth | Fifth | Sixth floors

TYPE 6 APARTMENT NUMBERS:

17, 28, 117, 130, 145, 217, 230, 245, 317, 330, 345, 416, 429, 444, 513, 526, 541, 626



Let **UK** Home

Let UK Home

JQ Modern 120 Vyse St

Birmingham

B18 6NF

0121 828 8955

pmadmin@letukhome.co.uk

Council Tax Band: D

Local Authority:

Agents Note: Whilst every care has been taken to prepare these particulars, they are for guidance purposes only. All measurements are approximate and are for general guidance purposes only and whilst every care has been taken to ensure their accuracy, they should not be relied upon and potential buyers/tenants are advised to recheck the measurements.

Energy Efficiency Rating		Current	Potential
Very energy efficient - lower running costs			
(92 plus) A			
(81-91) B		84	84
(69-80) C			
(55-68) D			
(39-54) E			
(21-38) F			
(1-20) G			
Not energy efficient - higher running costs			
England & Wales	EU Directive 2002/91/EC		

<https://www.letukhome.co.uk/>