



## Overhill Road, SE22

£425,000

Set within the iconic award winning Bredinghurst development on Overhill Road, this spacious three bedroom apartment is arranged over three levels and offers approximately 875 sq ft of internal living space.

The development itself is one of the most recognisable buildings in the area and is well positioned for the amenities of East Dulwich, Peckham Rye and the surrounding parks. Forest Hill Station is also a short bus ride away, providing direct connections to Central London. Nearby highlights include Dulwich Park, Horniman Museum, Dulwich Library, Picture Gallery and Lordship Lane.

### Features

- Iconic Development
- Three Double Bedrooms
- Two Terraces
- Chain Free
- Bathroom and Shower Room
- Bright and Airy

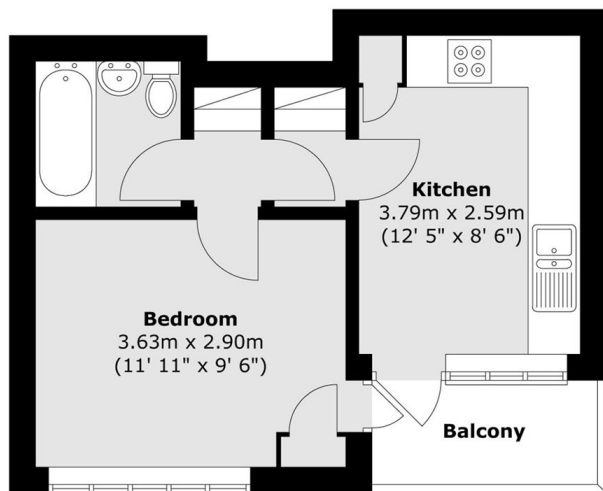


## Overhill Road, SE22

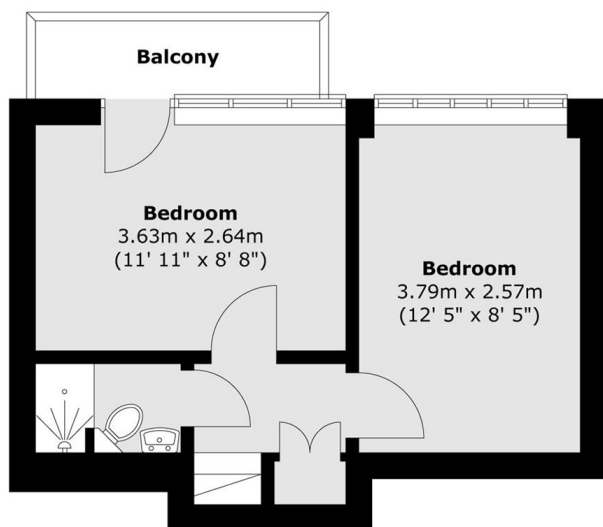
The property features a bright south facing reception room on the upper level with large windows that allow for excellent natural light, while the separate kitchen and three well proportioned bedrooms are located on the lower level, making it ideal for families or those looking for additional home office space. Further benefits include two private terraces overlooking the surrounding green spaces on both sides of the property. The estate incorporates private parking facilities, a basketball court, children's play area and a newsagents.



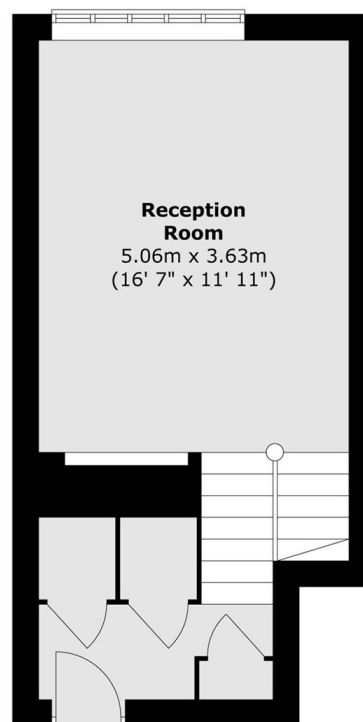
# Overhill Road, London, SE22



**First Floor**



**Ground Floor**



**Second Floor**

Total area (approx.) : 79.6 sq. m (857 sq. ft)  
First floor balcony area (approx.) : 3.3 sq. m (35 sq. ft)  
(Excluding ground floor balcony)