



## Mill Lane, SE8

£450,000

This beautifully presented two-bedroom apartment occupies an elevated position on the 15th floor of a striking modern development, offering truly spectacular panoramic views across the London skyline. Flooded with natural light through expansive windows, the property boasts a bright and airy atmosphere throughout, perfectly complementing its generous proportions and thoughtfully designed layout.

The spacious reception area provides an ideal setting for both relaxing and entertaining, seamlessly flowing into a contemporary kitchen fitted with sleek cabinetry and high-quality finishes. Both bedrooms are well-sized doubles, offering comfort and versatility, while the apartment's elevated position ensures a sense of privacy and tranquillity above the city below.

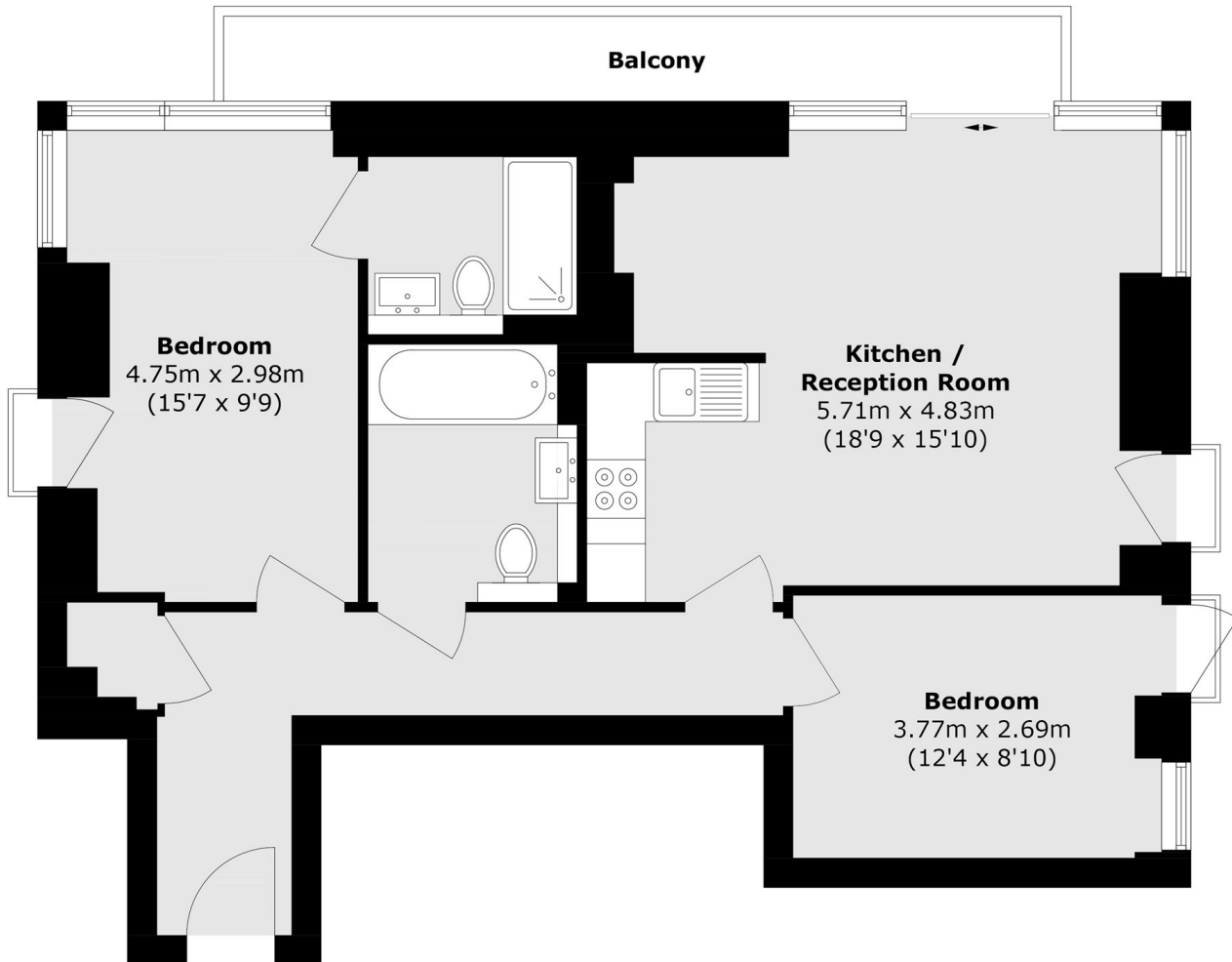
Set within the sought-after Distillery Tower, residents benefit from a stylish and well-maintained environment in a thriving riverside neighbourhood. The development is perfectly positioned to enjoy the best of Lewisham and Deptford, both known for their eclectic mix of cafés, restaurants, markets, and cultural hotspots. For commuters, the property is exceptionally well connected, with nearby transport links providing swift and convenient access into Central London and beyond, making it an ideal choice for professionals and investors alike. Combining modern living with an unbeatable location, this apartment presents a fantastic opportunity to enjoy vibrant city living from an impressive

### Features

Two Double Bedroom  
15th floor

En suite

# Mill Lane, London, SE8



Total area (approx.): 75.6 sq. m (813.7 sq. ft)  
Balcony area (approx.): 7.4 sq. m (79.6 sq. ft)