



Fettle Court, Moulding Lane, London, SE14 6BU

 2 Bedrooms  2 Bathrooms  1 Reception Room



## Fettle Court, Moulding Lane, SE14

Leasehold (989 years remaining)

A beautifully presented 3rd floor apartment with a private balcony overlooking parkland, offering contemporary living spaces flooded with natural light. Perfectly positioned between vibrant Deptford and leafy Greenwich, with excellent transport connections to central London.

### Key Features

- 2 Bedrooms, 2 Bathrooms
- Beautifully presented
- 12-Hour concierge
- Council Tax: **D**
- Service Charge: **£4,073.52**
- Ground Rent: **£560**
- Excellent transport links
- EPC: **B**

Situated in the heart of Deptford's ongoing regeneration, this exceptional two-bedroom apartment at Fettle Court presents an ideal opportunity for discerning buyers seeking quality, space, and connectivity. The development combines contemporary architectural design with thoughtful positioning, creating homes that benefit from both urban convenience and peaceful green outlooks.

This well-proportioned 805 sq ft residence showcases high specification interiors throughout, with an emphasis on light and modern living. The open-plan reception and kitchen area creates a welcoming social space, enhanced by floor-to-ceiling windows that bathe the apartment in natural light. The private balcony extends the living space outdoors, offering a peaceful retreat with views over the neighbouring park - perfect for morning coffee or evening relaxation. Both double bedrooms are generously sized, while the two contemporary bathrooms add a touch of luxury and convenience to everyday living.



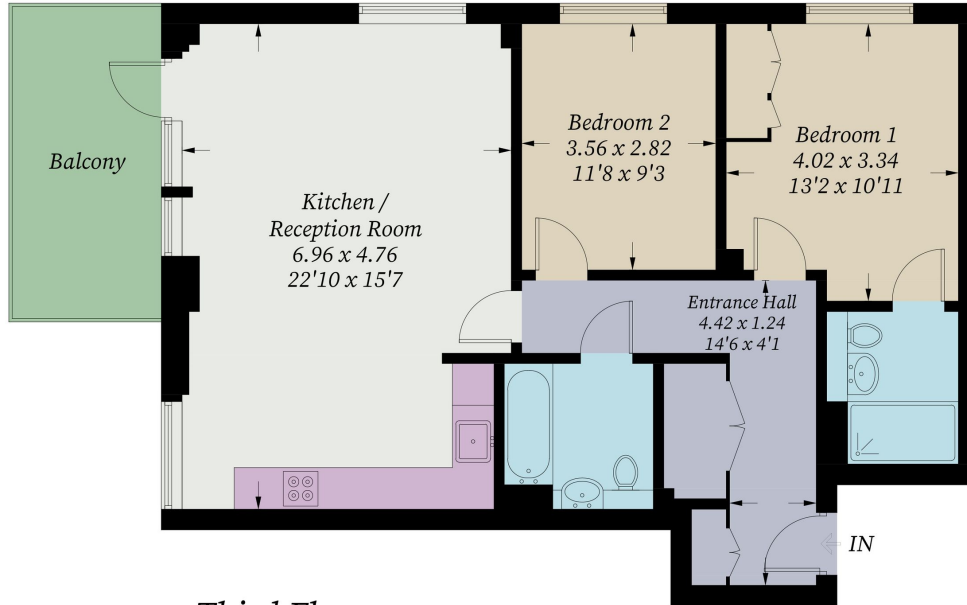






## Fettle Court, SE14

Approximate Gross Internal Area = 74.8 sq m / 805 sq ft



### Third Floor

Illustration for identification purposes only, measurements are approximate, not to scale. Fourlabs.co © (ID1310346)

22 College Approach, Greenwich,  
London, SE10 9HY  
Tel: 020 7399 5595

**Sales, Lettings & Property Management**

[residential.jll.co.uk](http://residential.jll.co.uk)

