

# THE HOME AGENCY

*'Passion for property.'*

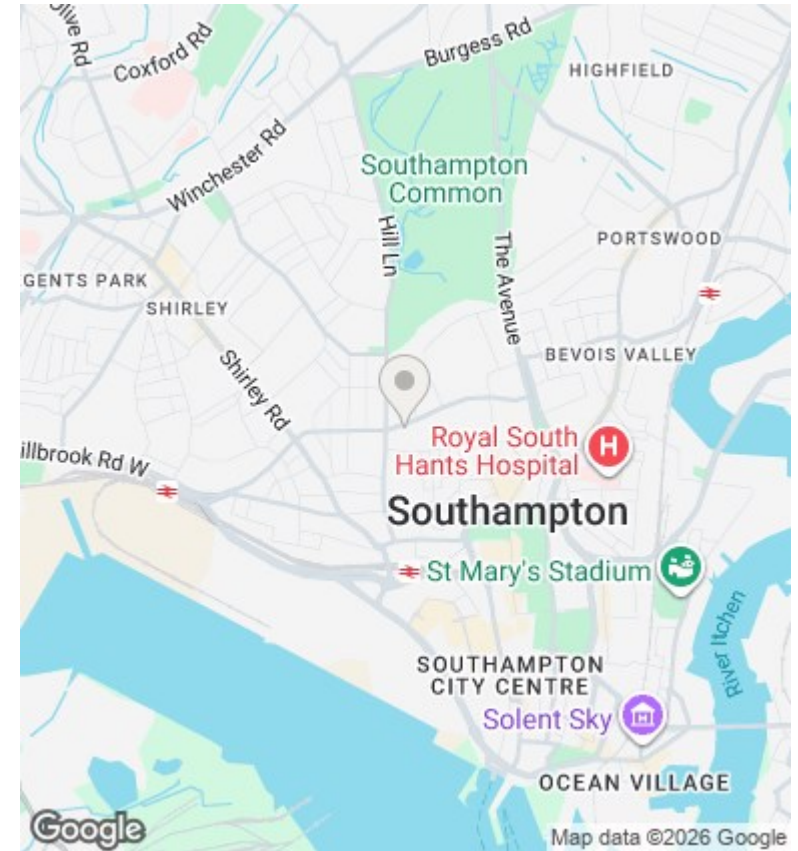
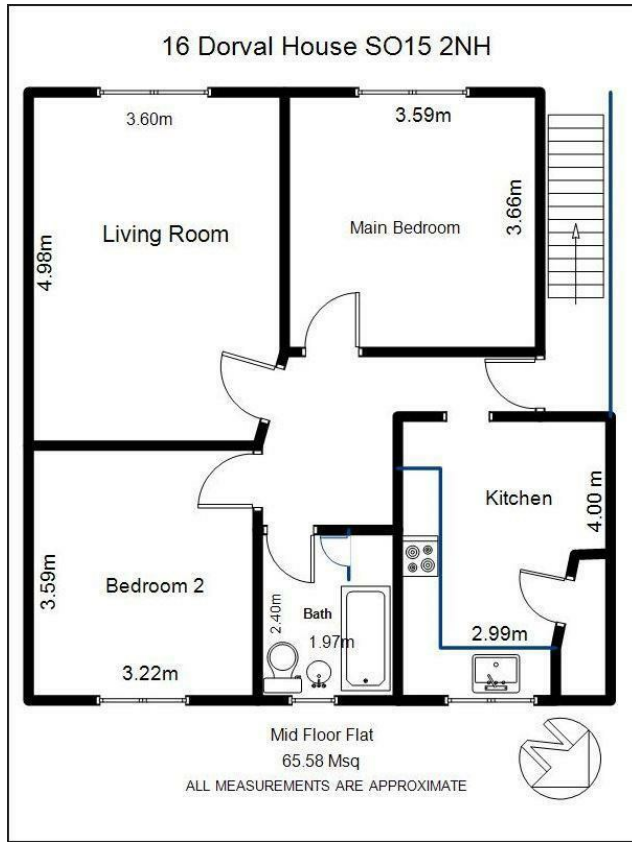


## 16 Dorval House, Silverdale Road, Bannister Park, Southampton, £1,250 PCM

- Purpose Built
- Economy 7 Heating
- Large Lounge
- Available Now
- Double Glazing
- White Goods
- New Carpets
- Two Double Bedrooms
- Redecorated Throughout
- Part Furnished

11 London Road, Southampton, Hampshire, SO15 2AE  
02380 632632

enquiries@thehomeagency.net  
<https://thehomeagency.net>



## Directions

## Viewings

Viewings by arrangement only. Call 02380 632632 to make an appointment.

## Council Tax Band

B

## EPC Rating:

D

Energy Efficiency Rating		
	Current	Potential
Very energy efficient - lower running costs		
(92 plus) <b>A</b>		
(81-91) <b>B</b>		<b>82</b>
(69-80) <b>C</b>		
(55-68) <b>D</b>	<b>66</b>	
(39-54) <b>E</b>		
(21-38) <b>F</b>		
(1-20) <b>G</b>		
Not energy efficient - higher running costs		
<b>England &amp; Wales</b>	EU Directive 2002/91/EC	