



The Avenue, W13

£399,950

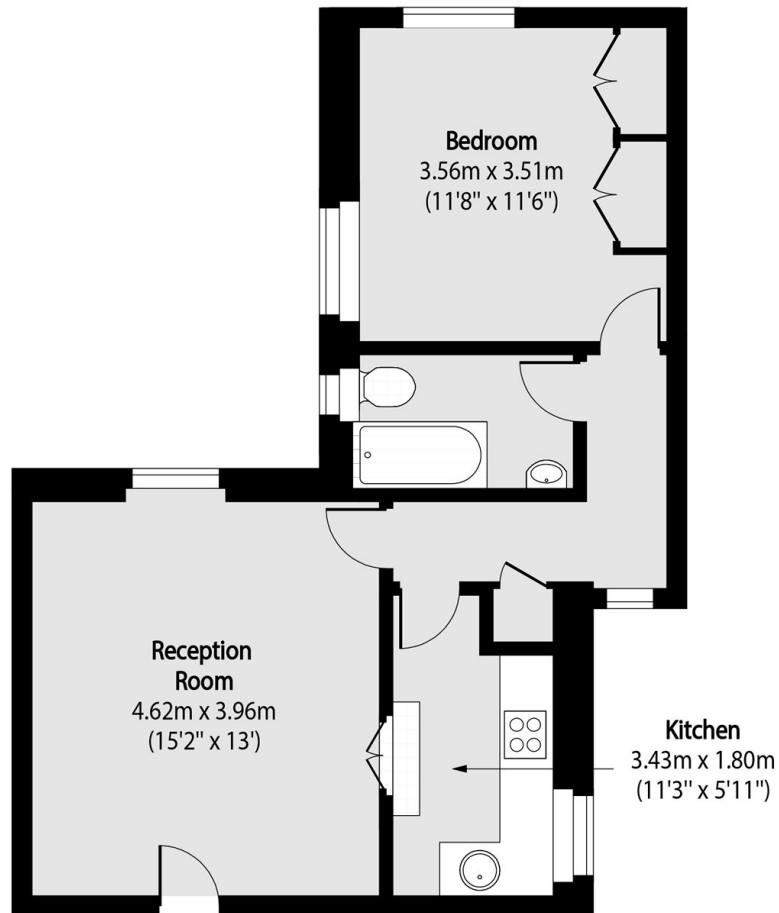
This raised ground floor period conversion features grand high ceilings and a bright, airy atmosphere throughout. The layout includes a generous living room, a separate kitchen, and a great double bedroom with dual aspect allow light to flood in.

You are perfectly placed on a premier tree-lined avenue near West Ealing's vibrant cafes. Connectivity is effortless with the Elizabeth Line just a short walk away, providing rapid access to Central London while remaining close to the area's beautiful local parks.

Features

- Period Conversion
- Share Of Freehold
- Long Lease
- High Ceilings
- Parking First Come First Serve
- Central Location

The Avenue, London, W13



Total area (approx): 47.10 sq m (507 sq. ft)