



HOMES BY VICTORIA
ESTATE AGENCY

Lydham Close, Redditch, B98 8GA

Offers Over £285,000

🛏️ 4 🚿 3 🚗 1



****WE ARE NOW FULL TO CAPACITY FOR VIEWINGS ON THIS PROPERTY & THEREFORE WE WILL NOT BE TAKING FURTHER VIEWINGS**** Stunning Three-Storey Family Home – Riverside, Redditch. This beautifully presented four-bedroom home in the highly sought-after Riverside area offers style, space, and versatility for the modern family. Spread over three floors, it boasts a striking kitchen-diner, elegant lounge with patio doors to the garden, luxurious master suite with Juliet balcony, and three further doubles. The landscaped rear garden is perfect for entertaining, and with driveway parking plus a garage, this property truly ticks every box. Viewing is essential to appreciate the quality and charm on offer.

[homesbyvictoria.co.uk](https://www.homesbyvictoria.co.uk)

victoria@homesbyvictoria | 07833 136521

FOR M HOMES MIDLANDS LIMITED trading as Homes By Victoria Company Number: 13688840 VAT no: 470190115



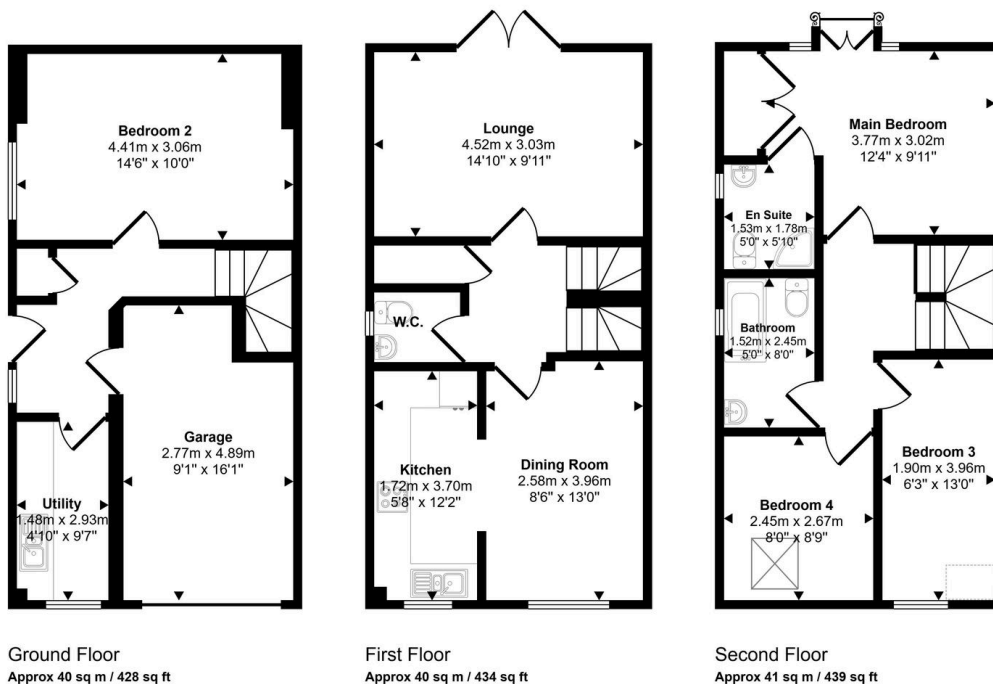
HOMES BY VICTORIA
ESTATE AGENCY



Key Features

- POPULAR RESIDENTIAL LOCATION
- A TRULY STUNNING HOME
- THREE STOREY VERSITILE LIVING
- FOUR BEDROOMS
- BEAUTIFUL KITCHEN DINER
- SEPERATE UTILITY ROOM
- LOUNGE
- MASTER WITH EN SUITE
- GARAGE AND DRIVEWAY
- EPC RATING D & COUNCIL TAX BAND D

Approx Gross Internal Area
121 sq m / 1301 sq ft



Denotes head height below 1.5m

This floorplan is only for illustrative purposes and is not to scale. Measurements of rooms, doors, windows, and any items are approximate and no responsibility is taken for any error, omission or mis-statement. Icons of items such as bathroom suites are representations only and may not look like the real items. Made with Made Snappy 360.