

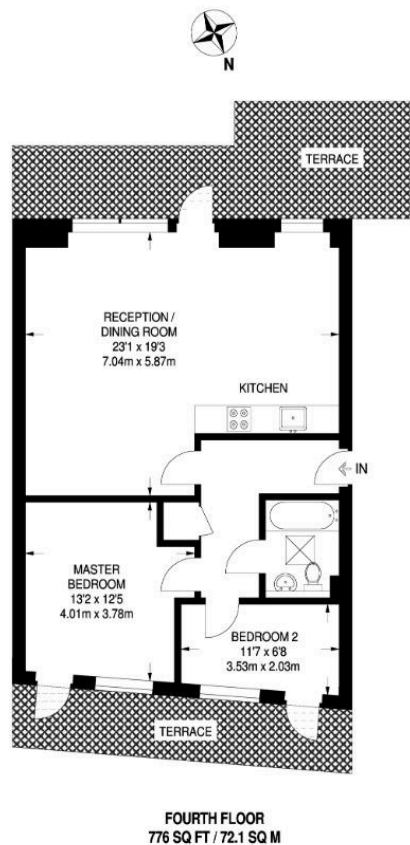
## Southern Row, Notting Hill, W10

Guide Price £650,000 to £700,000

2 1 1



- Quote MG1175 for all enquiries
- Guide Price - £650,000 to £700,000
- 2 Bedrooms
- 1 Bathroom
- 2 Private Balconies (South & North)
- Penthouse Floor (4th)
- Lift Access
- c. 776 sqft
- Walking to Ladbroke Grove & Westbourne Park Close to Portobello Road & Golborne Road Stations



A beautifully presented two bedroom top floor apartment set within a modern development on Southern Row, W10. Measuring approximately 776 sqft, this bright and well-designed home benefits from two private terraces, lift access and a superb south-facing reception space flooded with natural light throughout the day.