



Leathermarket Street, SE1

£2,550 Per calendar month

Special one bedroom apartment is this former leather factory featuring large windows, wood flooring and excellent storage. Unusually spacious, the property is a good example of open-plan living and is offered in excellent internal condition.

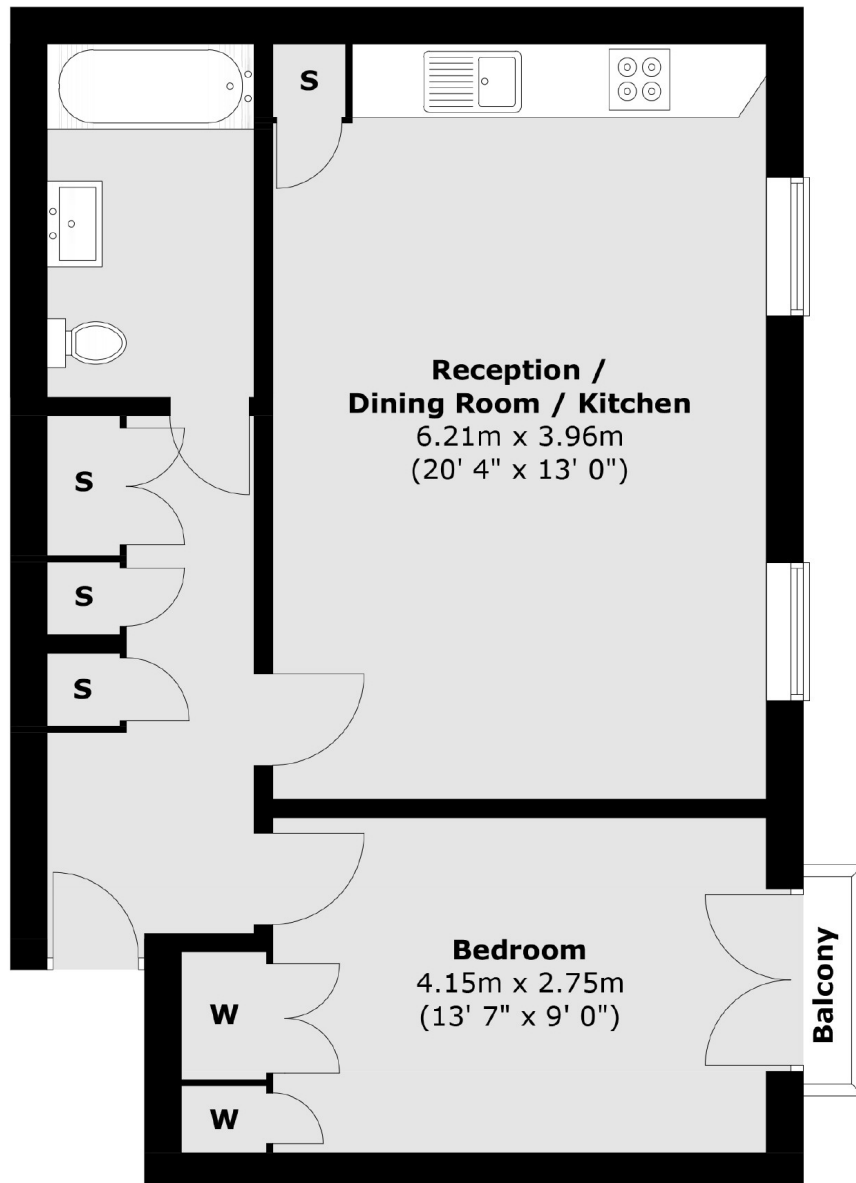
Amazing location overlooking Leathermarket Gardens and close to Bermondsey street where you will find an array of independent bars, cafes and shops including Jose's restaurant, which is extremely popular with locals.

Features

- One Bedroom Apartment
- Former Leather Factory
- Unusually large
- Wood Flooring
- Amazing Location
- Bike Storage

Leathermarket Street, London, SE1

Second Floor



Total area (approx.) : 53.9 sq. m (580 sq. ft)
Total balcony area (approx.) : 0.7 sq. m (7 sq. ft)