



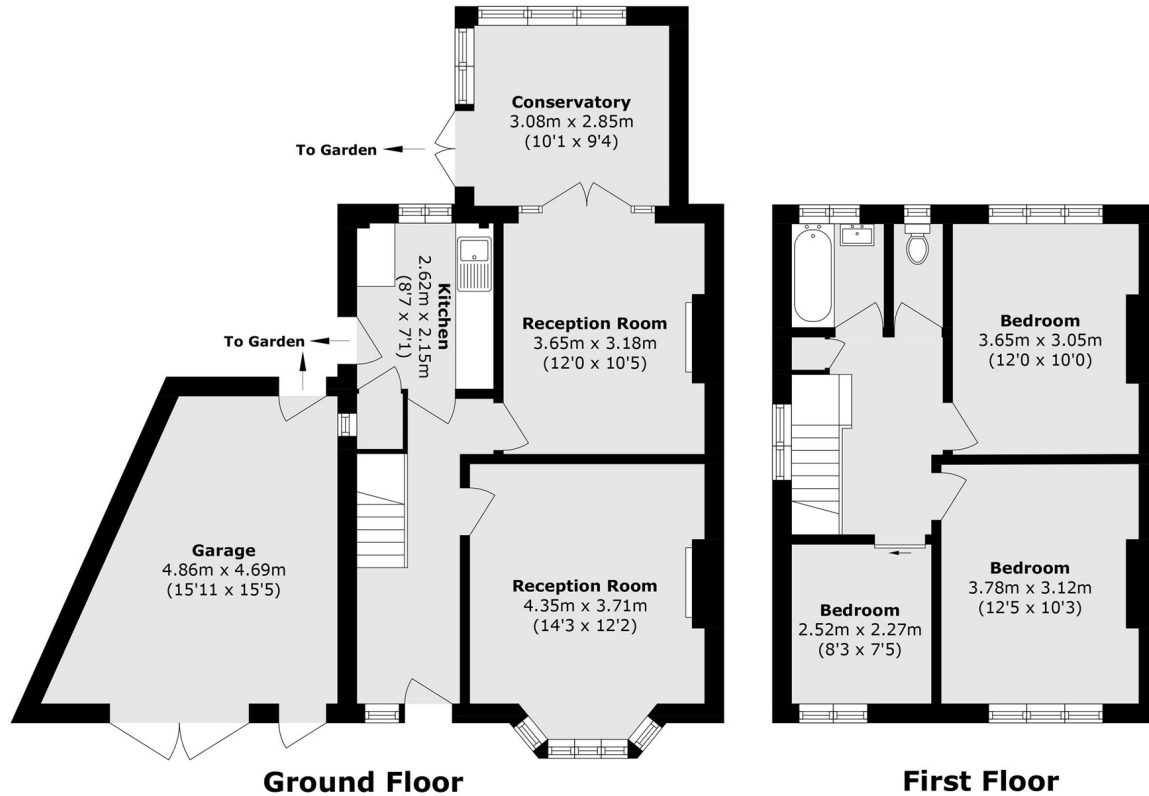
Windmill Lane, UB6

£499,950

This three bedroom end-of-terrace property is offered to the market with no onward chain. The property offers potential to extend (STPP) and benefits from off-street parking and a garage to the side of the property.

Ideally situated for local shops, restaurants, parks and schools, making it an ideal location for families. The property enjoys easy access to Greenford (Central line) station and the A40, for convenient access to central London.

- Three Bedrooms • End-Of-Terrace • Chain Free •
- Off-Street Parking • Garage • Potential To Extend (STPP) •



Total area (approx.): 93.7 sq. m (1008.6 sq. ft)
Garage area (approx.): 17.5 sq. m (188.4 sq. ft)

Robertson Smith & Kempson Hanwell Sales
69 Greenford Avenue,
London, W7 1LL
020 8566 2339
hanwellsales@robertsonsmithandkempson.co.uk

Energy Rating: E. We aim to make our particulars both accurate and reliable. However they are not guaranteed; nor do they form part of an offer or contract. If you require clarification on any points then please contact us, especially if you're traveling some distance to view. Please note that appliances and heating systems have not been tested and therefore no warranties can be given as to their good working order.