



OVER 60?

Secure this property
for up to **59% less!**

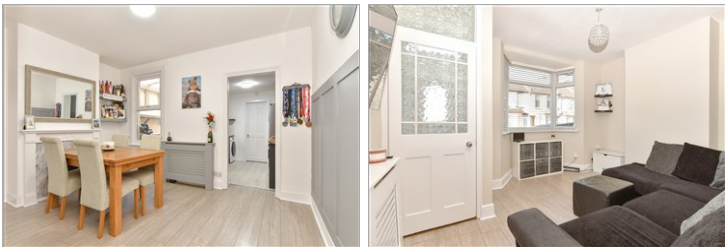
Guide Price
£250,000

Freehold

3x  1x  1x 

**Tennyson Road, Upper
Gillingham, Kent, ME7**

Wards
Helping you move forwards



Main features

- **Victorian terraced house with great size rooms**
- **Good size kitchen and lean to**
- **Generous garden, perfect for hosting friends and family**
- **Ideal for first time buyers**
- **Situated in the popular area of Poet's corner in upper Gillingham**

Accommodation

GROUND FLOOR

Porch

Lounge: 10'0 into bay x 9'9 (3.05m x 2.97m)

Dining Room: 13'3 x 10'0 (4.04m x 3.05m)

Kitchen: 10'0 x 8'0 (3.05m x 2.44m)

Bathroom: 7'10 x 6'1 (2.39m x 1.86m)

SPLIT LEVEL FIRST FLOOR

Landing

Bedroom 1: 13'0 x 10'2 (3.97m x 3.10m)

Bedroom 2: 13'0 x 10'1 (3.97m x 3.08m)

Bedroom 3 (off Bedroom 2): 10'0 x 8'0 (3.05m x 2.44m)

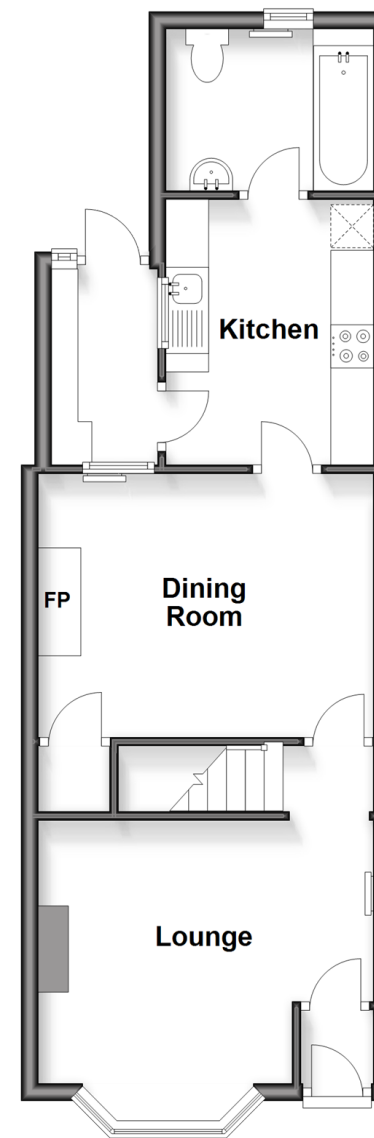
OUTSIDE

Front Garden

Rear Garden

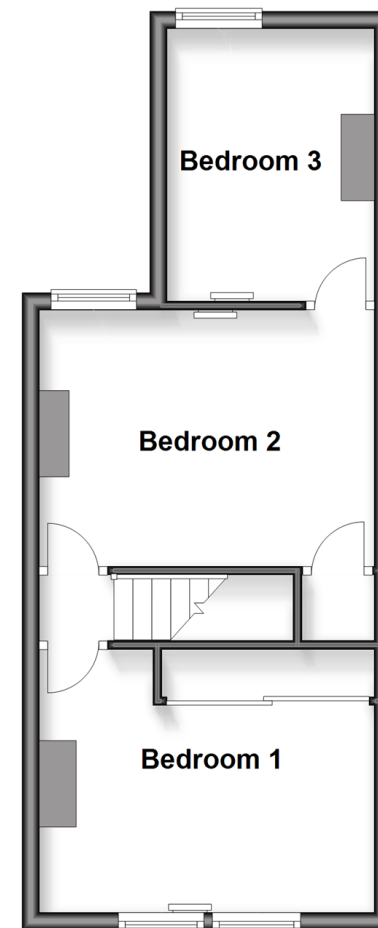
Ground Floor

Approx. 43.7 sq. metres (470.3 sq. feet)



Split Level First Floor

Approx. 35.3 sq. metres (380.4 sq. feet)



Call Gillingham - 01634 851191 ■ wardsofkent.co.uk

- Legal advice should be taken to verify fixtures/fittings, planning, alterations and/or lease details
- Appliances & services are untested, dimensions are approximate and floor plans are not to scale
- Through a Homewise Home For Life Plan people aged 60+ can secure this property for up to 50% less, by purchasing a Lifetime Lease.



11021053/20251119/NNA/HF