



11 Dacre Crescent, Aveley

Guide Price £400,000 - £425,000

3 1 1

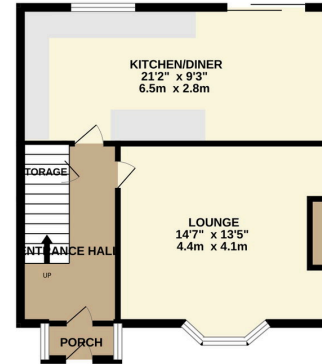


- Three Double Bedroom End of Terrace House
- Brand New Fully Fitted Kitchen/Diner finished to an extremely High Standard
- Walking Distance to local High Street
- Beautifully presented wrap around rear garden with storage shed and decking
- ~~See info for~~ **See info for** Space with potential for future conversion (subject to planning permissions)
- Off Street Parking for Several Cars to front and neat and tidy front garden
- UPVC Double Glazed Windows Throughout
- Close to M25, A13 and A127 Motorway Network
- Porch to Front
- Well Maintained Throughout.

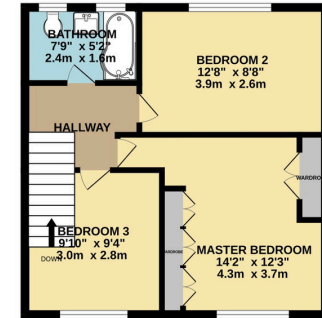




GROUND FLOOR
472 sq.ft. (43.9 sq.m.) approx.

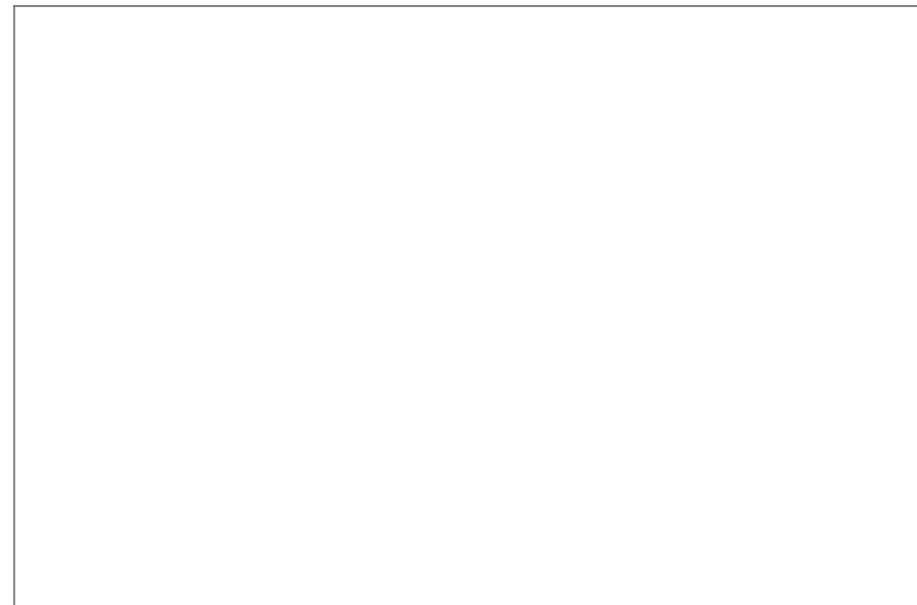


1ST FLOOR
427 sq.ft. (39.6 sq.m.) approx.



TOTAL FLOOR AREA: 899 sq.ft. (83.5 sq.m.) approx.

Whilst every attempt has been made to ensure the accuracy of the floorplan contained here, measurements of blocks, windows, rooms and any other items are approximate and no responsibility is taken for any error, omission or mis-statement. This plan is for illustrative purposes only and should be used as such by any prospective purchaser. The services, systems and appliances shown have not been tested and no guarantee as to their operability or efficiency can be given.
Made with Metropix (2020).



Address: 18 Derwent Parade, South Ockendon, RM15 5EE

Phone: 01708 203 232

Email: zow@myidealmortgage.co.uk