

# Lugus HOMES



## Nine Elms Lane, London

£4,500 Per month



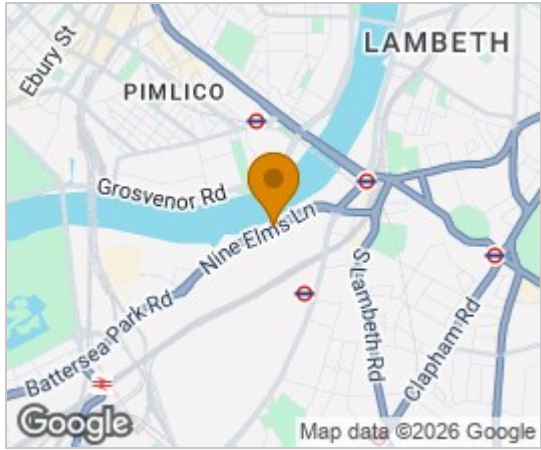
This spacious three-bedroom apartment in the prestigious Riverside Court development offers stunning views of the River Thames and superb value in a prime South Bank location. Comprising approximately 1,164 sq. ft, the apartment features three generous double bedrooms with built-in wardrobes, two modern bathrooms, a fully equipped kitchen, and a bright, expansive reception room that takes full advantage of the riverside setting.

The property is fully furnished and includes heating and hot water in the rent, a gated car parking space, and access to an on-site porter service.

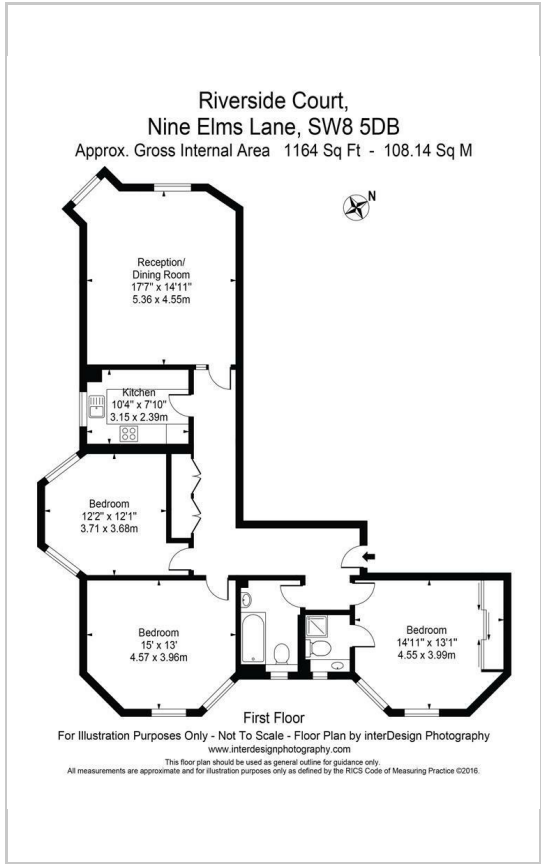
Ideally located for transport and local amenities, Riverside Court is just 0.4 miles from Vauxhall Station (Victoria Line & National Rail) and 0.5 miles from Nine Elms and Battersea Power Station (Northern Line), providing easy access to Central London and the West End. Shops, cafés, restaurants, and supermarkets such as Waitrose and Sainsbury's are all within walking distance, making this an ideal home for professionals or families seeking a stylish riverside residence.



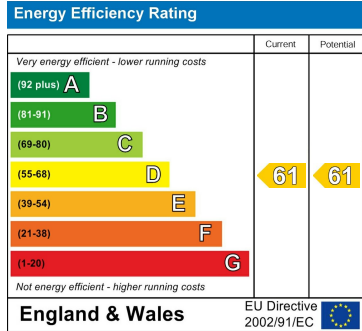
# Area Map



# Floor Plans



# Energy Efficiency Graph



These particulars, whilst believed to be accurate are set out as a general outline only for guidance and do not constitute any part of an offer or contract. Intending purchasers should not rely on them as statements of representation of fact, but must satisfy themselves by inspection or otherwise as to their accuracy. No person in this firm's employment has the authority to make or give any representation or warranty in respect of the property.