



Chartfield Avenue, SW15

£725,000

Dexters



Chartfield Avenue, SW15

This well-proportioned four bedroom family home offers approximately 861 sq ft of accommodation arranged over two floors. The ground floor features a bright open-plan kitchen and reception room with direct access to a private rear garden, ideal for entertaining and everyday family living. The ground floor also has a separate cloakroom, generous hallway and a Versatile fourth bedroom on the ground floor which could be used as a study or guest room.

Upstairs, the property offers three further bedrooms and a family bathroom. The home benefits from good natural light throughout and a private patio garden with raised planting areas.

Chartfield Avenue is a quiet residential street ideally located for the amenities of Putney. Residents benefit from easy access to Putney High Street with its shops, cafés and restaurants, as well as excellent transport links including East Putney Underground station (District Line) and Putney mainline station providing direct services to London Waterloo. There are also a number of well-regarded schools and green open spaces nearby including Wandsworth Park and Putney Heath.

Features

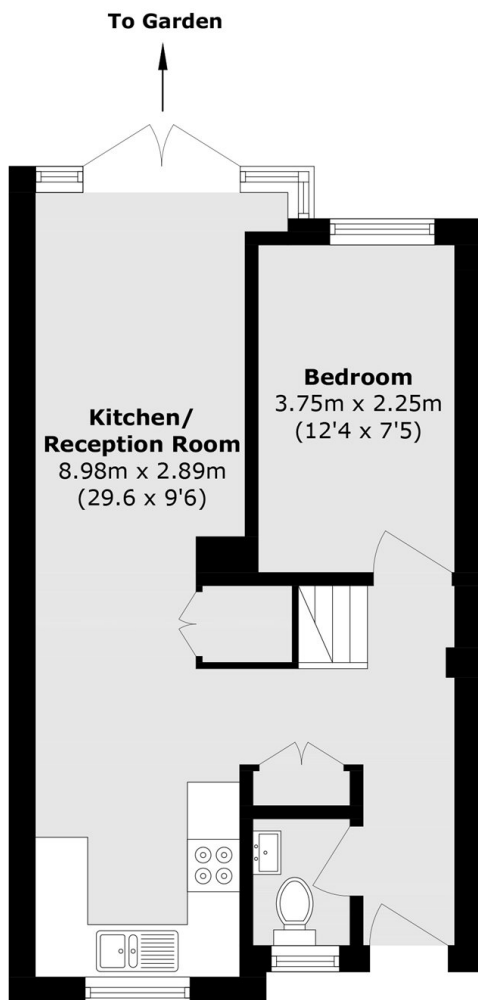
- 861 sq. ft
- Chain Free
- Off Street Parking
- Private Garden
- Four Bedrooms
- Private Garage



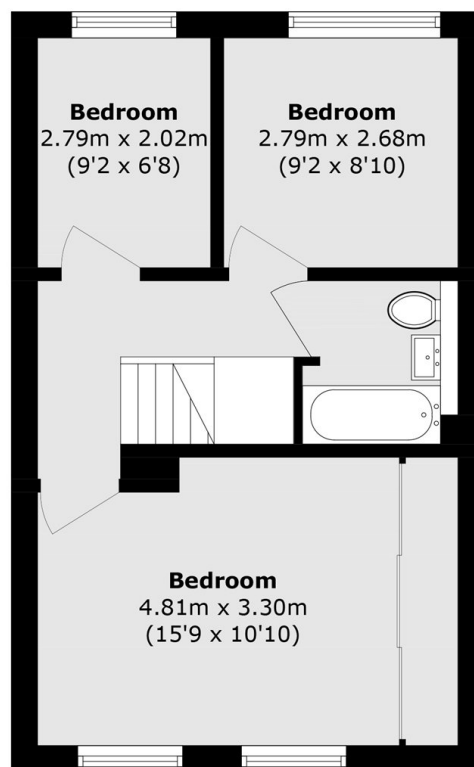




Chartfield Avenue, London, SW15



Ground Floor



First Floor

Total area (approx.): 80.0 sq. m (861.1 sq. ft)