

first for homes

first for property in life - [firstforhomes.co.uk](https://www.firstforhomes.co.uk)

Contact Allan England's Team

01592 752 944



Peter Easton Lane, Markinch
Offers over £245,000

Peter Easton Lane, Markinch

Beautifully Presented 3-Bed Detached Villa With 2/3 Car Driveway & Spacious Gardens, In Prime Location of Markinch!

Allan England's award winning team at first for homes are proud to offer to the market this lovely 3-bed Detached Villa situated within the desirable area of Sappi Road, Glenrothes / Markinch. Built by Persimmon Homes in 2024- size 92sqm. The property offers spacious family living accommodation comprising on the ground floor level: entrance hall, welcoming family lounge, modern open-plan kitchen/diner with integrated appliances (fridge freezer, dishwasher, hob and oven) and a generous cloaks / WC. The upper level offers spacious master bedroom with en-suite shower room. 2 further generous bedrooms (one being utilised as a gym) and modern family bathroom complete the upper level. Externally, there is a 2/3-car driveway and small garden to the front and side with an easily maintained West facing rear garden with patio area and large chipped area. The property also benefits from Solar panels and NHBC warranty remaining. Viewing is essential to fully appreciate all this great home has to offer.

EPC RATING- B
COUNCIL TAX BAND - E
HOME REPORT- £255,000

Call first for homes - first for trust... first for service... first for aftercare!

The much sought-after area of Markinch boasts its very own Golf course, Primary school, mainline railway station and local shopping facilities. The nearby town of Glenrothes is regarded as one of the most successful new towns in Scotland with a wealth a local amenities including the Kingdom Shopping Centre as well as sport and leisure at Michael Woods. For the commuter the A92 allows swift road access to central west Fife and central Scotland motorway network. There are good rail connections North and South from Markinch itself.





SITUATION – Markinch

ENTRANCE HALLWAY

LOUNGE

18'7" x 10'2" (approx) (5.67m x 3.10m (approx))

KITCHEN/DINER

18'7" x 9'0" (approx) (5.67m x 2.75m (approx))

CLOAKS/WC

STAIRS TO UPPER LEVEL

BEDROOM 1

12'4" x 10'3" (approx) (3.77m x 3.13m (approx))

EN-SUITE

6'6" x 5'10" (approx) (2.00m x 1.80m (approx))

BEDROOM 2

10'2" x 8'11" (approx) (3.10m x 2.72m (approx))

BEDROOM 3

8'11" x 8'1" (approx) (2.72m x 2.48m (approx))

FAMILY BATHROOM

6'11" x 6'4" (approx) (2.12m x 1.94m (approx))

2/3 CAR DRIVEWAY

FRONT, SIDE & REAR GARDENS

INFORMATION

Information

These particulars are prepared on the basis of information provided by our clients. We have not tested the electrical system or any electrical appliances, nor where applicable, any central heating system. All sizes are recorded by electronic tape measurement to give an indicative, approximate size only. Prospective purchasers should make their own enquiries – no warranty is given or implied. This schedule is not intended to, and does not form any contract.

FREE Valuation

Selling Your Home?

Choose first for homes - a highly experienced estate agency team you can trust to sell your home at the highest possible price. Offering fantastic savings on selling fees, with no compromise on service, free professional photography highlighting your home in its best light, first for homes will be your first choice. Contact us today to arrange your appointment.



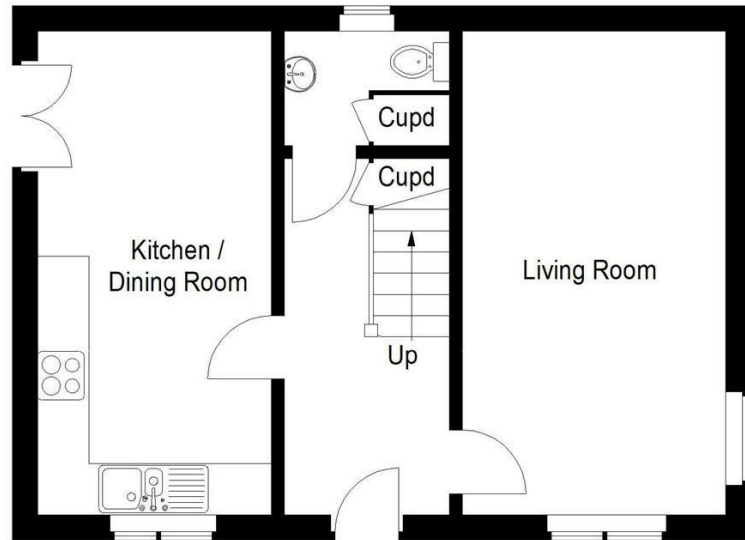
first for trust



first for service



first for aftercare



Ground Floor



First Floor

Illustration for identification purposes only, measurements are approximate, not to scale. Fourlabs.co © (ID1282448)

first for homes
first for property in life - firstforhomes.co.uk

Contact Allan England's Team
01592 752 944

32 North Street, Glenrothes, Fife KY7 5NA
Fax: 01592 807947
sales@firstforhomes.co.uk
www.firstforhomes.co.uk