



## Priory Green Estate, N1

£375,000

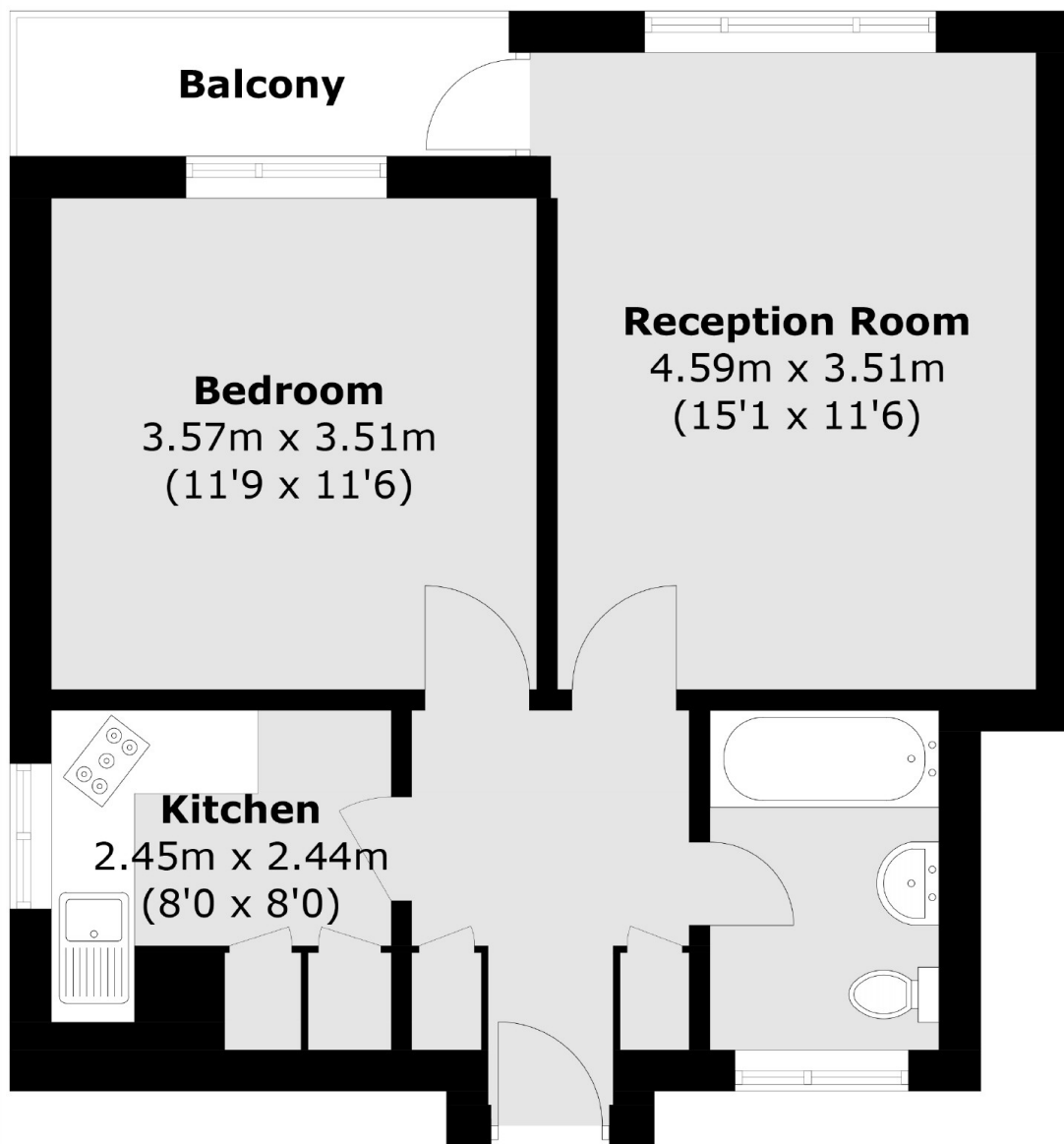
This meticulously designed third floor apartment boasts an elegant layout, featuring a separate kitchen and living room. Situated within a secure gated development, this property offers exceptional storage facilities, a nominal service charge covering heating and hot water, and a delightful private balcony accessible from the living room.

This prime location is in close proximity to King's Cross St Pancras, a bustling transportation hub, and a host of desirable amenities, such as Coal Drops Yard, which is set to accommodate up to 7000 Google employees in the near future.

### Features

- Nearly 500 Sq Ft
- Private Balcony
- Separate Living Room
- Excellent Storage
- Top Floor
- No Onward Chain

# Priory Green Estate, London, N1



Total area (approx.): 46.1 sq. m (496.2 sq. ft)  
Balcony area: 3.5 sq. m (37.6 sq. ft)