



**Guide Price**  
**£400,000**

**Freehold**

3x  1x  1x 

**Frobisher Way,  
Gravesend, Kent, DA12**

*Wards*  
Helping you move forwards



## Main features

- A lovely family home with plenty of space
- Located in the highly sought after Riverview Park
- Close to excellent schools
- Large corner plot with the potential to extend subject to planning permission
- Within easy reach of shops, parks, and essential amenities

## Accommodation

### GROUND FLOOR

Entrance Hall  
Lounge/Diner: 24'1 x 11'10 (7.35m x 3.61m)  
Kitchen : 9'6 x 8'9 (2.90m x 2.67m)

### FIRST FLOOR

Landing  
Bedroom 1: 12'6 x 11'6 (3.81m x 3.51m)  
Bedroom 2: 11'5 x 9'11 (3.48m x 3.02m)  
Bedroom 3: 8'11 x 6'10 (2.72m x 2.08m)  
Bathroom

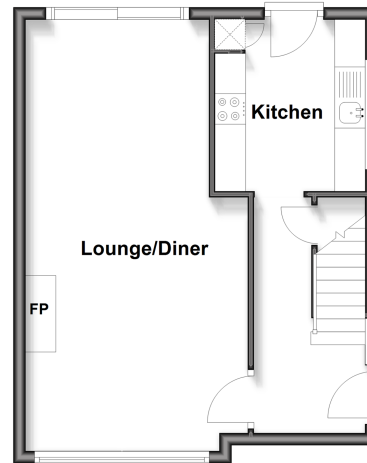
### OUTBUILDING

Garage

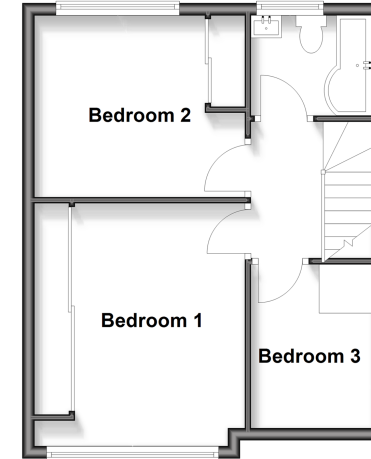
### OUTSIDE

Driveway  
Rear Garden

**Ground Floor**  
Approx. 38.6 sq. metres (415.4 sq. feet)



**First Floor**  
Approx. 38.6 sq. metres (415.4 sq. feet)



**Outbuilding**  
Approx. 11.0 sq. metres (118.5 sq. feet)

