



Cornwall Gardens, SW7

£700,000

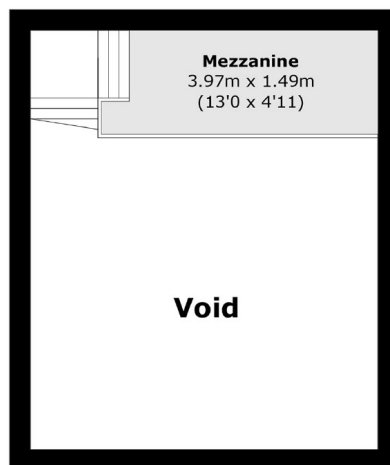
Located in a highly sought-after area just a short walk from Hyde Park, this charming first-floor apartment boasts impressively high ceilings and a stylish mezzanine level, adding a unique sense of space and character. Offered with no onward chain, this property presents an excellent opportunity for first-time buyers, investors, or those seeking a convenient pied-à-terre in a prime London location.

Cornwall Gardens is walking distance from Gloucester Road Underground station, as well as all the shops, restaurants and local amenities of South Kensington.

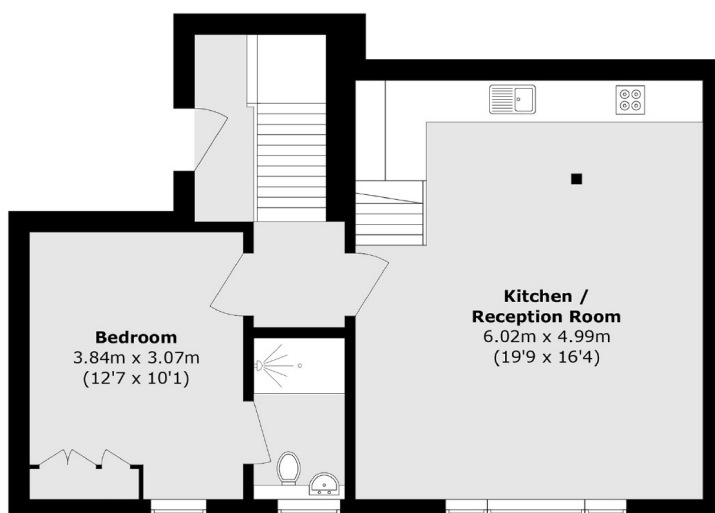
Features

- One Bedroom
- Highly Sought After Location
- No Ongoing Chain
- High Ceilings
- First Floor
- Walking Distance Of Gloucester Road Station

Cornwall Gardens, London, SW7



Mezzanine



First Floor

Total area (approx.): 59.9 sq. m (568.3 sq. ft)
(Including Mezzanine)