



Justin Close, TW8

£500,000

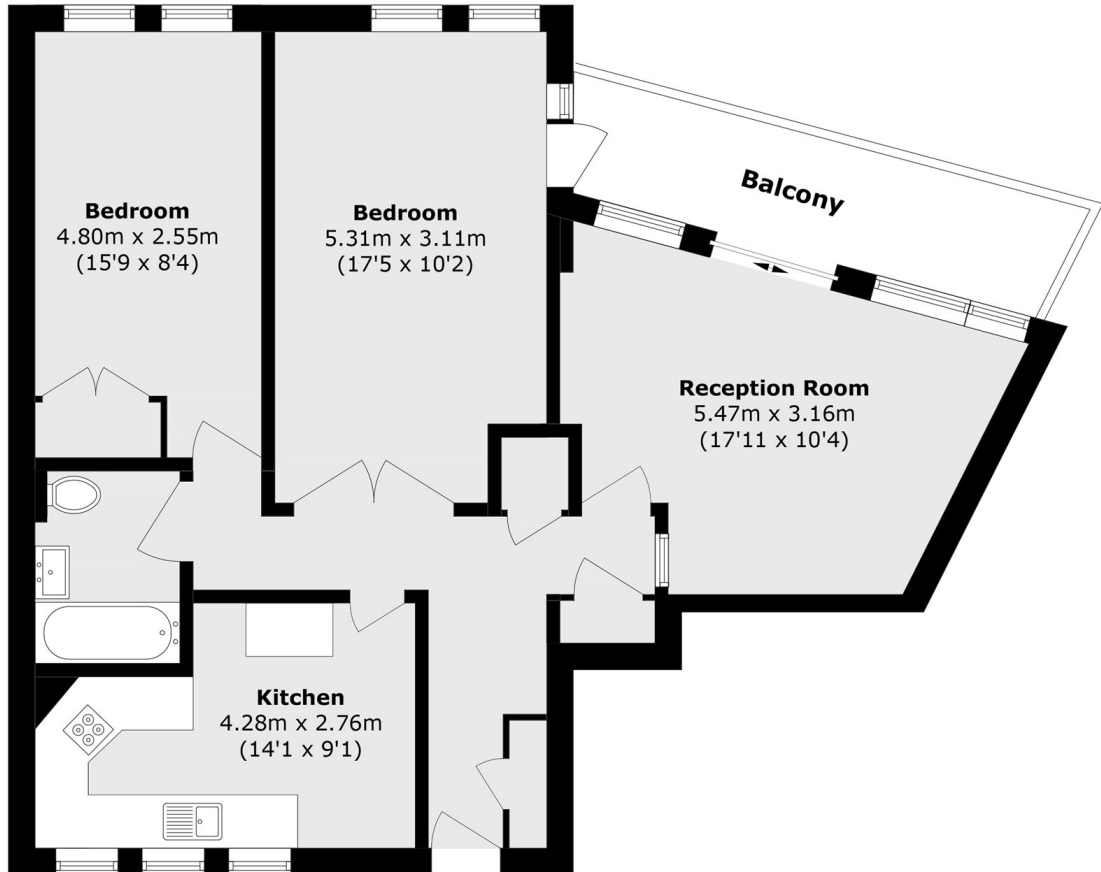
A rarely available two bedroom maisonette in Julius Court in Brentford Docks. Offered with no onward chain and a share of the freehold, this property features a large private terrace with direct and stunning views.

Brentford Dock is a popular riverside development within walking distance to Brentford High Street. It is within walking distance of Brentford overground station and a short drive from the M4/A4 providing great access in and out of London.

Features

- Riverside Development
- Direct River Views
- Two Bedrooms
- Private Terrace
- 24 Hour Security
- No Onward Chain

Justin Close, Brentford, TW8



Total area (approx.): 70.8 sq. m (762.0 sq. ft)

Balcony area (approx.): 7.6 sq. m (81.8 sq. ft)